

Hays County FM 150 West Character Plan Nature and Character Master Plan

**Public Meeting #1
Tuesday, December 13, 2016
Dripping Springs High School**

WELCOME & INTRODUCTIONS

- Hays County Precinct 4 Commissioner Ray Whisenant
- Hays County Precinct 3 Commissioner Will Conley
- Project Team
- Citizens Advisory Panel

WELCOME & INTRODUCTIONS

Citizens Advisory Panel

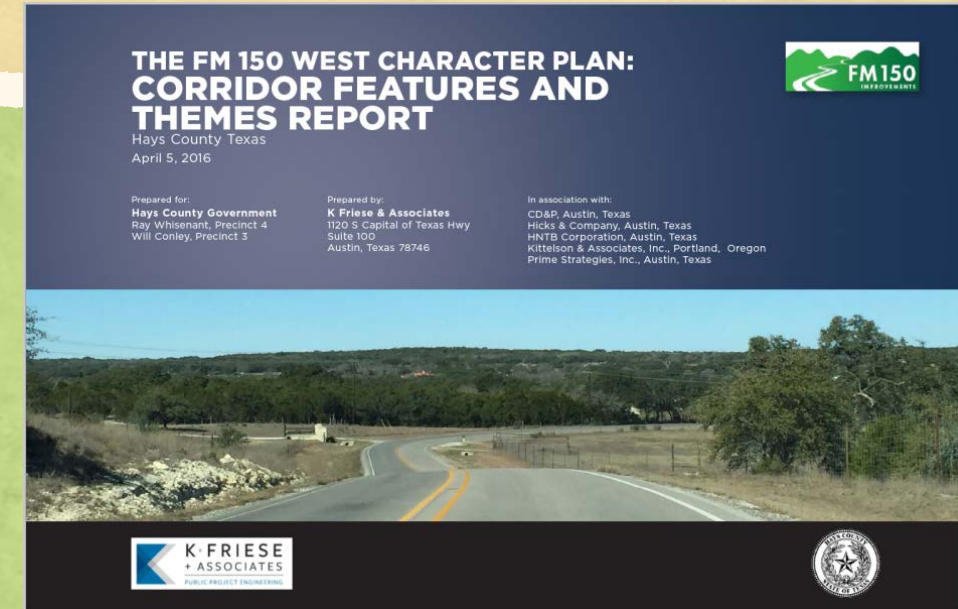
- Mr. Don Bosse
- Mr. David Braun
- Mr. Casey Cutler
- Mr. Dennis Dement
- Mr. Shelby Eckols
- Mr. Mark Oechsner
- Mr. Bob Parks
- Mr. Mike Pruitt
- Judge Bob Shannon

AGENDA

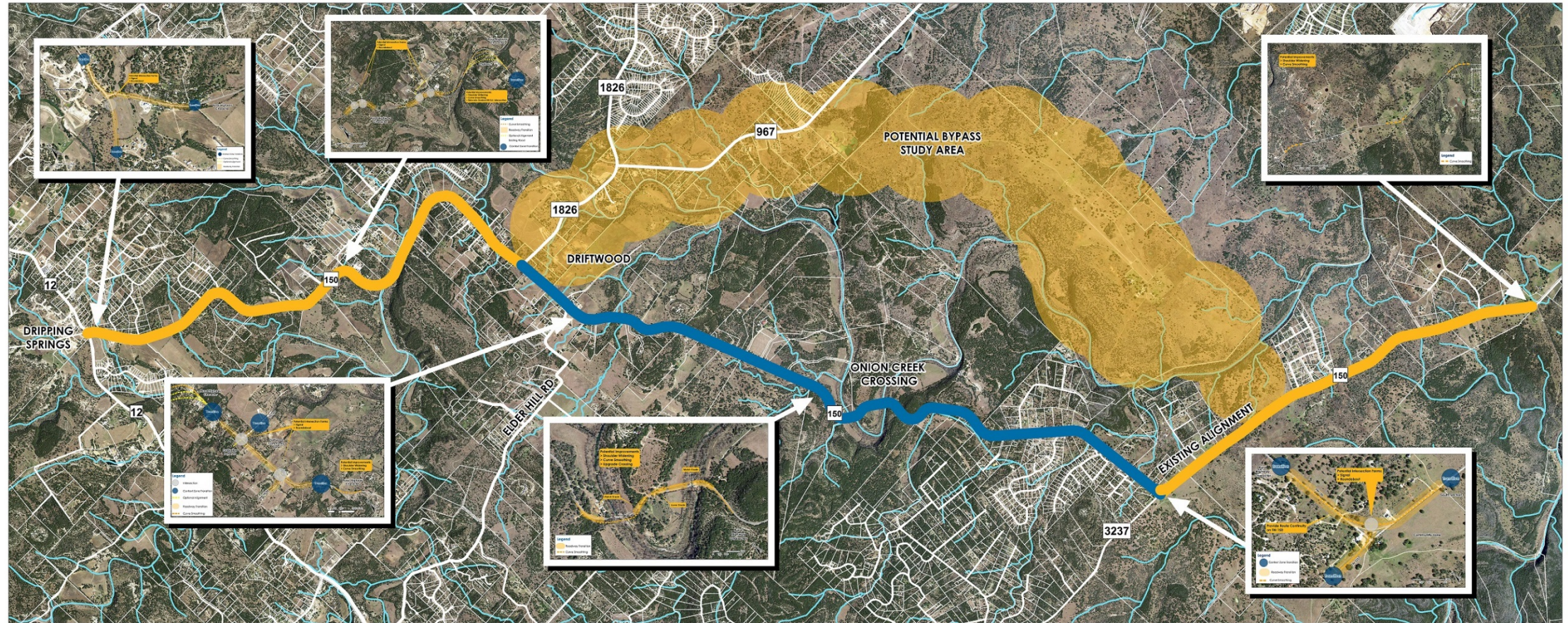
1. Review Past Project Activities
2. Nature and Character Master Plan Scope
3. Project Schedule
4. Current Activities
5. Crash Data Update
6. Planning Exercise Overview
7. Questions
8. Conduct Planning Exercise

BACKGROUND

- Corridor Features and Themes Report complete
- Developed with extensive community engagement
- Documents existing conditions on corridor and key characteristics
- Outlines future planning framework and continuum of improvements



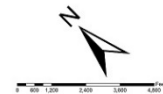
STUDY AREAS



FM 150 Nature & Character Master Plan
Corridor Concepts

Legend

- North
- Middle
- South
- Roads
- Bypass
- Property Line
- River



Date: 11/17/2016

K·FRIESE
+ ASSOCIATES
PUBLIC PROJECT ENGINEERING

NATURE AND CHARACTER MASTER PLAN SCOPE

- Embarking on Nature and Character Plan
- Will result in **Corridor Master Plan**
 - Define concepts to schematic level
 - Estimate costs for design and construction
 - Develop relative order for implementation
 - Define the “cookbook” of concepts: scopes for additional study, costs of studies, process, timing
- Tonight is first of many opportunities for input!

NATURE AND CHARACTER MASTER PLAN SCOPE

Preliminary Schematics

- FM 150 from RM 12 south to FM 1826
- FM 150 from FM 3237 south to the vicinity of Arroyo Ranch Road
- Potential Bypass Route to the east of FM 150

Guidance












- FM 150 from FM 1826 south to FM 3237

OPPORTUNITIES FOR INVOLVEMENT

Three Public Meetings

1. Review the Features and Themes Study, expectations for the second phase of work, and community input
2. Gather community input on preliminary schematics for FM 150 from FM 3237 south to the vicinity of Arroyo Ranch Road, and for the Potential Bypass Route.
3. Gather community input on preliminary schematic for FM 150 from FM 1826 to RM 12

PROJECT SCHEDULE

	2016				2017											
Month	Sept	Oct	Nov	Dec	Jan	Feb	Mar	Apr	May	Jun	Jul	Aug	Sep	Oct	Nov	Dec
Project kick-off																
Focus: Arroyo Ranch to FM 3237 and proposed bypass route																
Focus: FM 1826 to RR 12																
Project wrap-up and report																



Public Meeting



CAP Meeting

PROJECT SCHEDULE

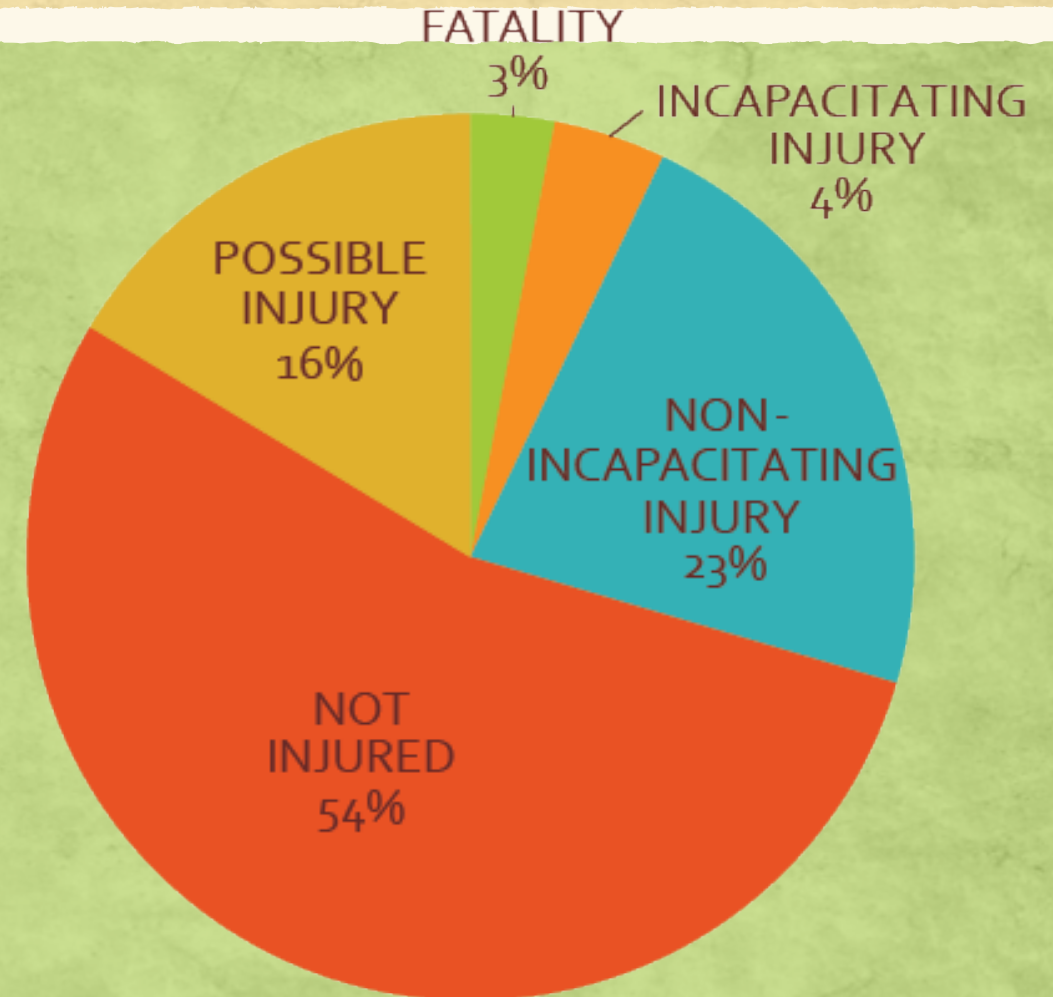
Date	Meeting Type	Location
Tuesday, November 15, 2016	Citizens Advisory Panel	Dripping Springs High School Cafeteria
Tuesday, December 13, 2016	Public Meeting	Dripping Springs High School Cafeteria
Thursday, January 19, 2017	Citizens Advisory Panel	Dripping Springs High School Lecture Hall
Thursday, February 23, 2017	Citizens Advisory Panel	Dripping Springs High School Lecture Hall
Thursday, March 23, 2017	Citizens Advisory Panel	Dripping Springs High School Lecture Hall
Thursday, April 27, 2017	Public Meeting	Dripping Springs High School Cafeteria
May 2017	No Meeting	No Meeting
Thursday, June 15, 2017	Citizens Advisory Panel	Dripping Springs High School Lecture Hall
Thursday, July 20, 2017	Citizens Advisory Panel	Dripping Springs High School Lecture Hall
Thursday, August 10, 2017	Citizens Advisory Panel	Dripping Springs High School Lecture Hall
Thursday, September 21, 2017	Public Meeting	Dripping Springs High School Cafeteria
Thursday, October 19, 2017	Citizens Advisory Panel	Dripping Springs High School Lecture Hall

CURRENT ACTIVITIES

- Updating traffic counts
- Updating and reviewing crash data (initial summary provided)
- Updating human and natural environmental constraint data
- Working on base engineering
- Preparing for the January CAP meeting
 - Beginning to look at FM 3237 to Arroyo Ranch section
 - Developing potential Bypass Study Route

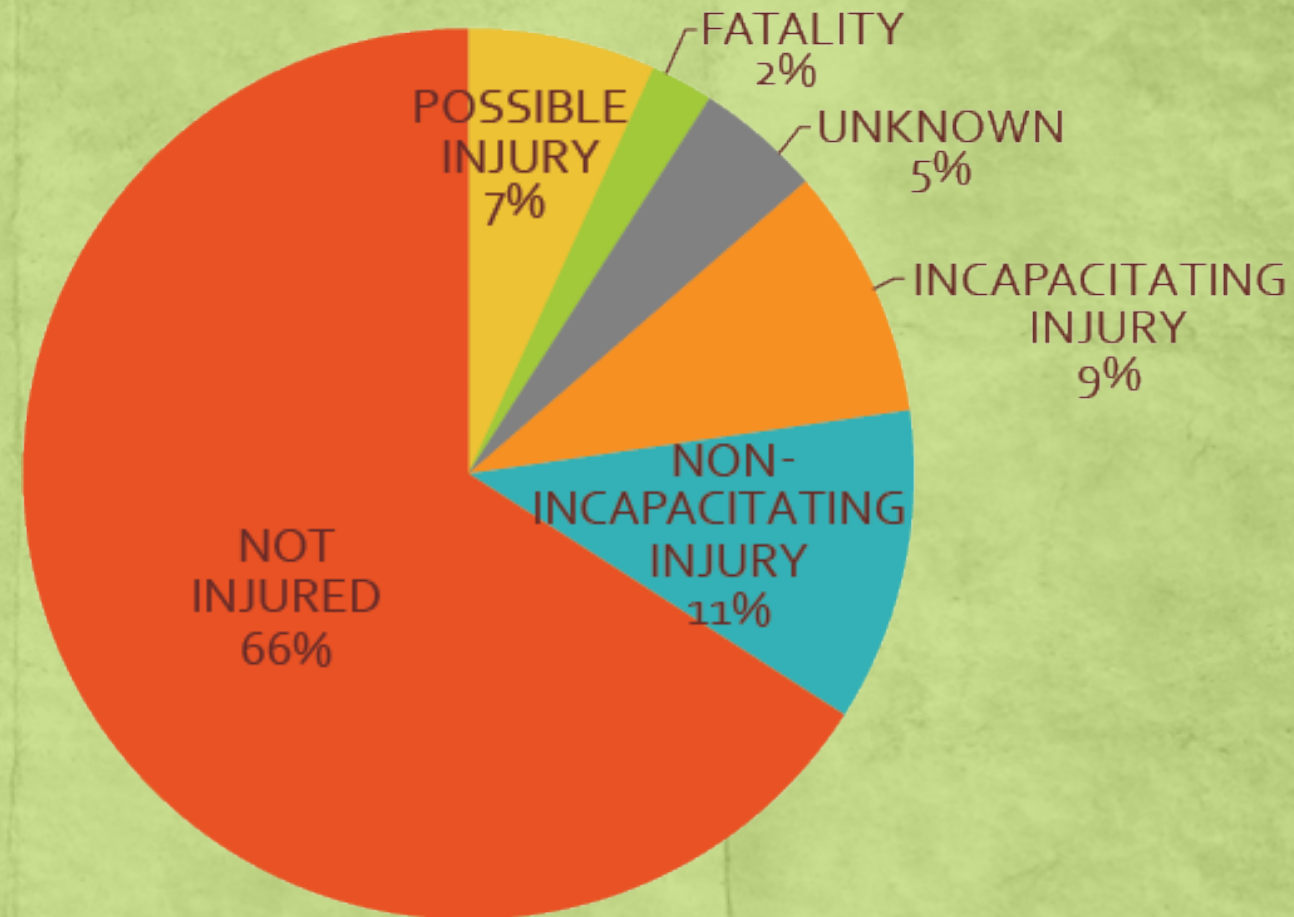
CRASH DATA UPDATE

- First phase reviewed data from Jan. 2010 to June 2014 (4.5 years)
- 98 crashes assessed
- Majority of crashes involved no or possible injuries
- 3 fatal crashes

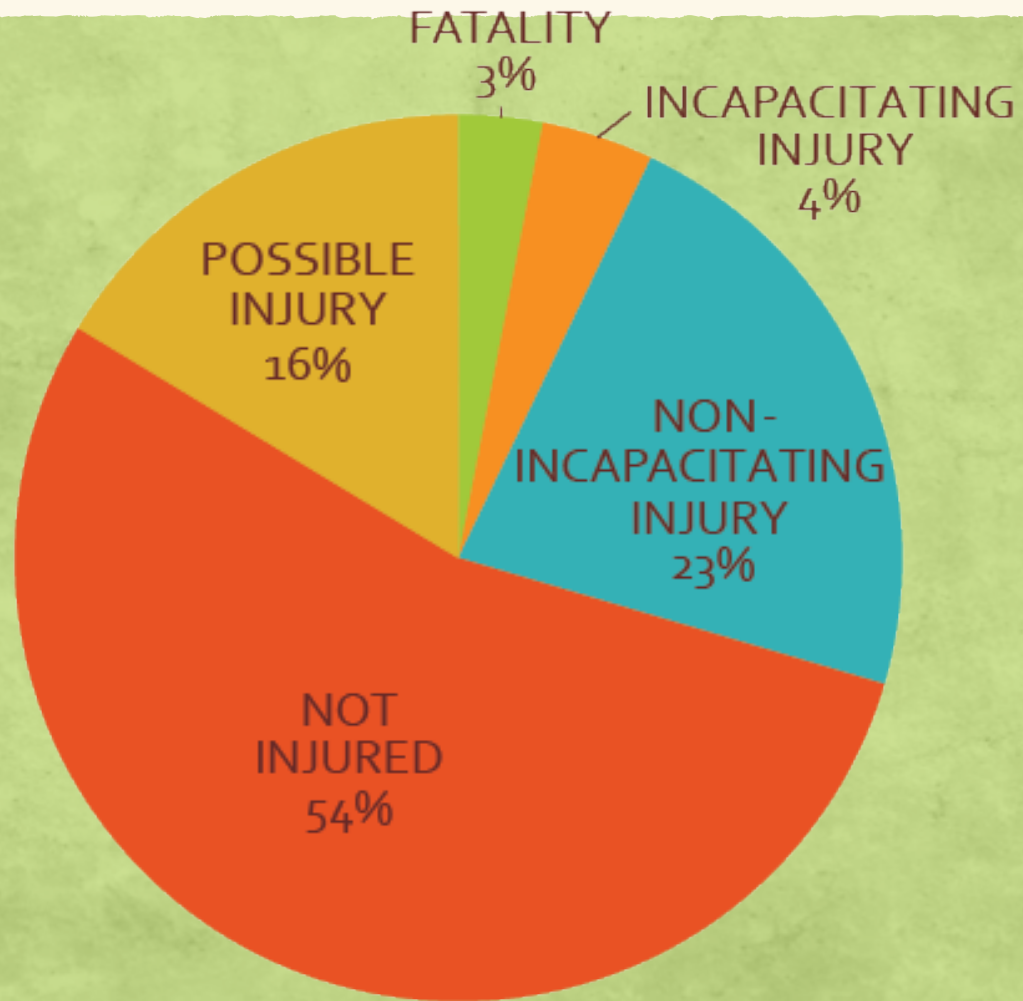


CRASH DATA UPDATE

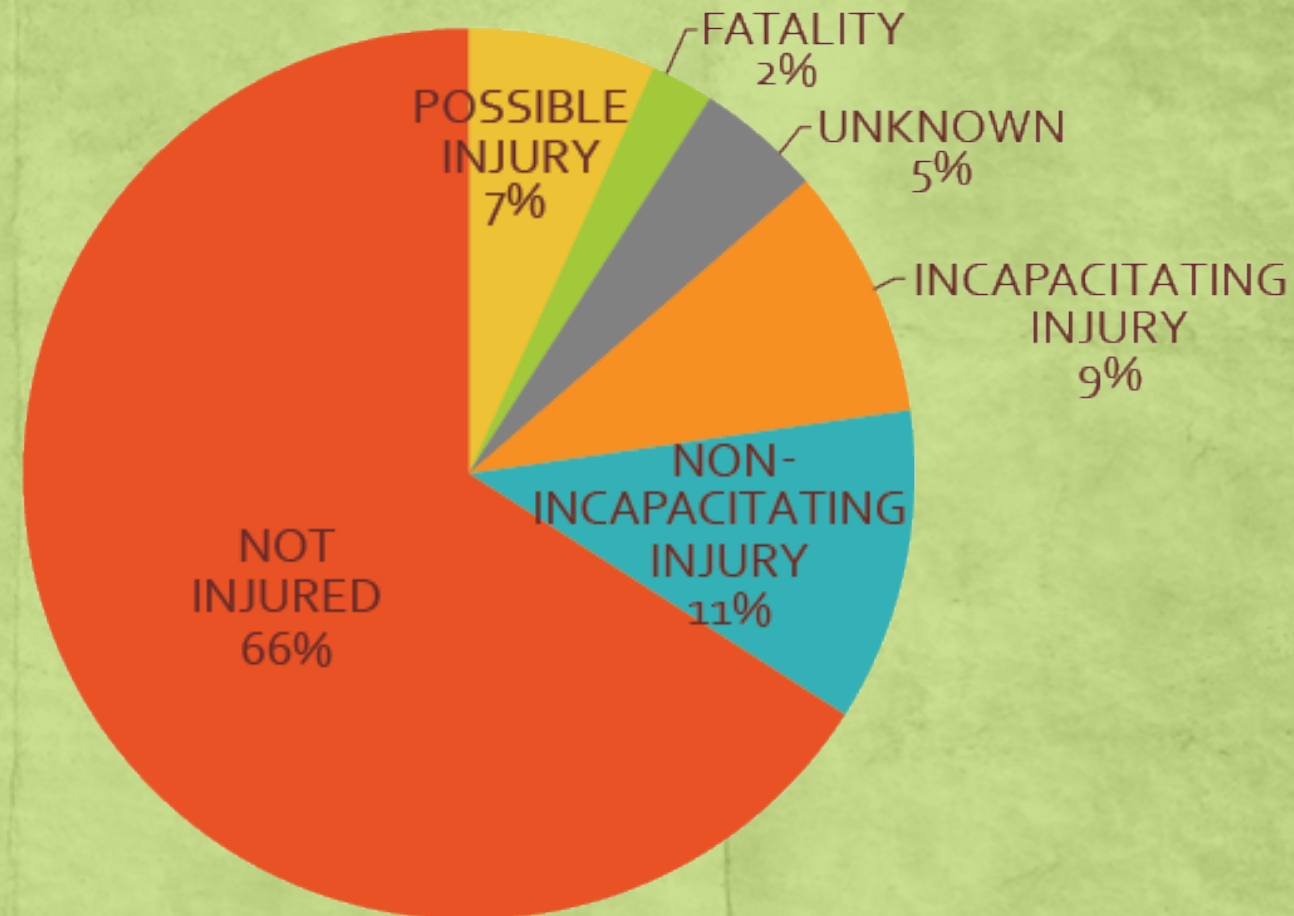
- Reviewed July 2014 through Aug. 2016 data (2.25 years)
- 44 crashes assessed
- Similar number of crashes *per year*
- Again, majority of crashes involved no or possible injuries
- 1 fatal crash near double low water crossings



CRASH DATA UPDATE



Jan. 2010 to June 2014



July 2014 through Aug. 2016

CRASH DATA UPDATE

- Significant portion of fixed object crashes (34% - previously 50%)
- Majority of crashes non-intersection related (68% - previously 76%)
- Most crashes occurred when the weather was clear
- Similar conclusions: potential influence of narrow shoulders, isolated or tight curves, non-recoverable sections of roadway

CRASH DATA UPDATE



PLANNING EXERCISE

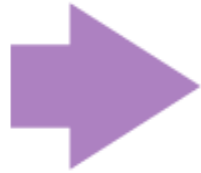
- Looking for your feedback on potential features
- Following slides walk through potential improvements identified in previous phase of project, as well as current considerations
- Help us determine the types of roadway features to consider in each section

PHASED IMPROVEMENTS

- Developed by section and time-frame

Near-Term Improvements

Existing alignment
Two-lane safety cross section
Intersection enhancements



Mid-Term Improvements

Spot treatments to curves
Transition to long-term layout



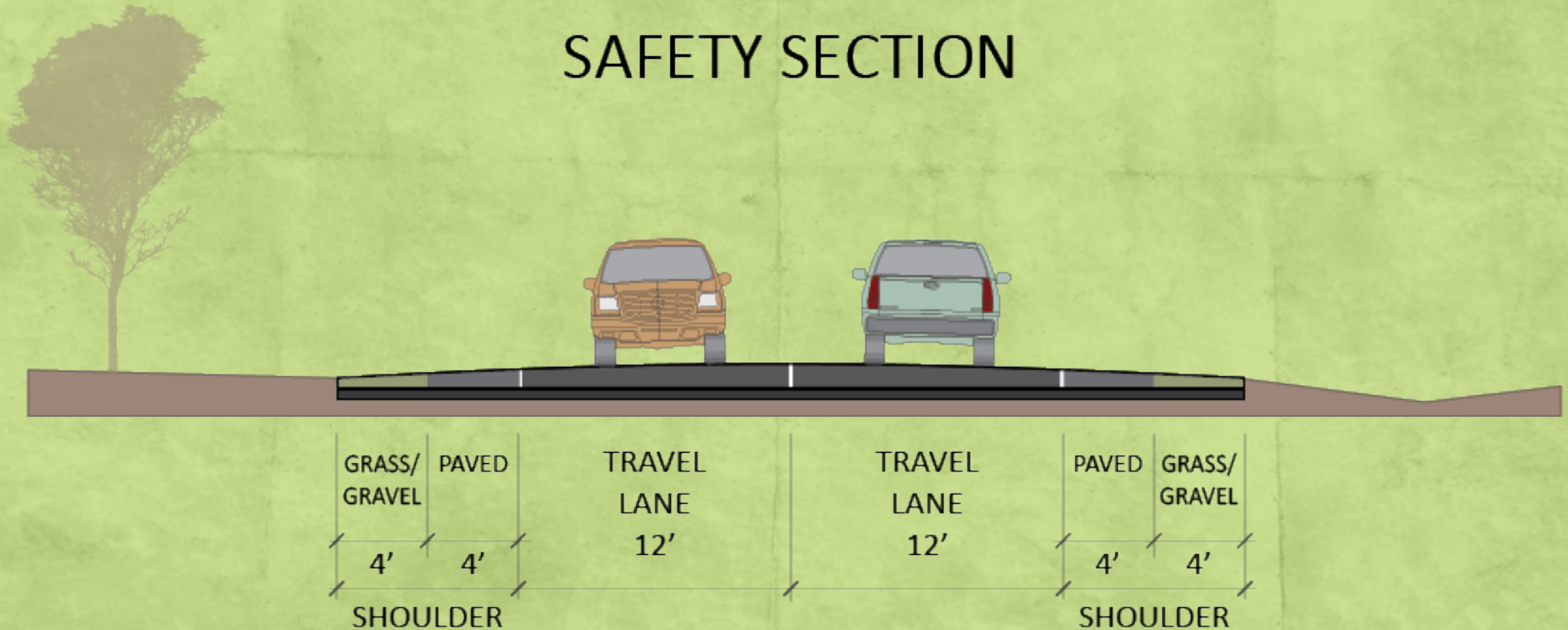
Long-Term Improvements

Future alignment
Future cross sections

PHASED IMPROVEMENTS EXAMPLE

- Example of safety section (near-term)

SAFETY SECTION



PHASED IMPROVEMENTS EXAMPLE

- Intersection enhancements (near- to mid-term)
 - Improving delineation
 - Considering alternative traffic control
 - Enhancing sight-distance
 - Intersection improvements (e.g. turn lanes)

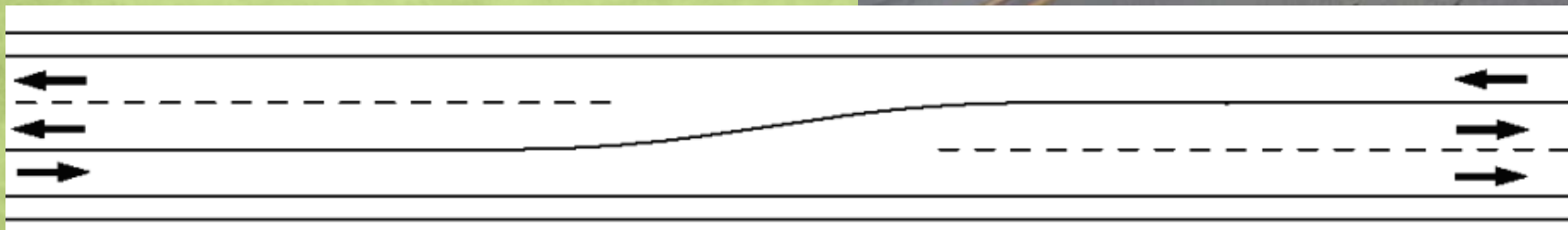
PHASED IMPROVEMENTS EXAMPLE

- Curve treatments (mid-term)
- Future cross-section (long-term)



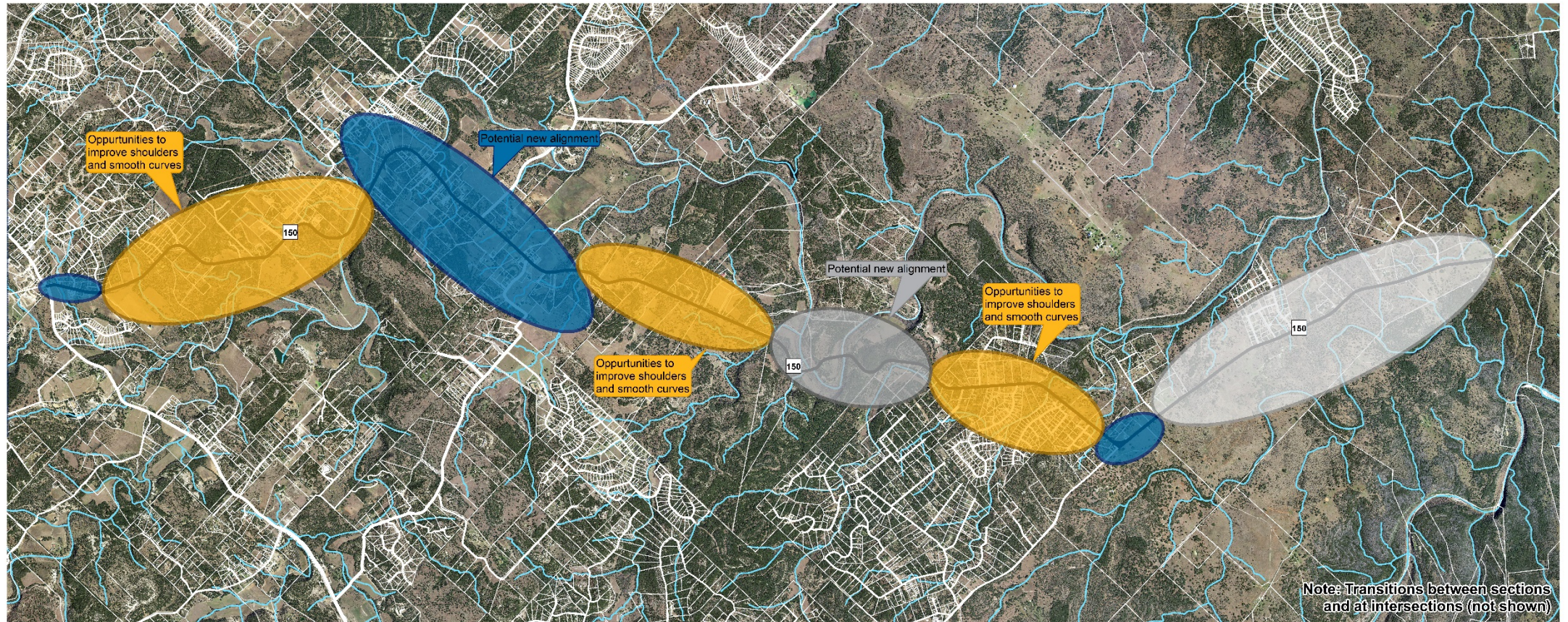
WHAT IS A SUPER TWO?

- “a periodic passing lane is added to a two-lane rural highway to allow passing of slower vehicles and the dispersal of traffic platoons” (TxDOT)

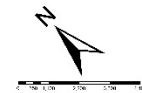
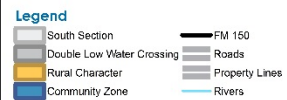


Source: Google Maps
Gonzales, TX

CORRIDOR BY CONTEXT ZONE



FM 150 Nature & Character Master Plan Context Zones



Date: 12/2/2016

SEGMENTS WITH RURAL CHARACTER CONTEXT

- Beauty of rural, undeveloped nature along corridor
- Few driveway access points
- Abundance of vegetation up to roadway
- Desire to preserve nature and character



SEGMENTS WITH RURAL CHARACTER CONTEXT

Considerations:

- Target speed
- Bicycle, pedestrian, equestrian accommodations
- Wayfinding signage
- Delineation



COMMUNITY ZONES

- Areas where the activities along the corridor change
- Greater access to destinations
- Speeds commensurate with the land uses
- Desire to set driver expectations appropriately



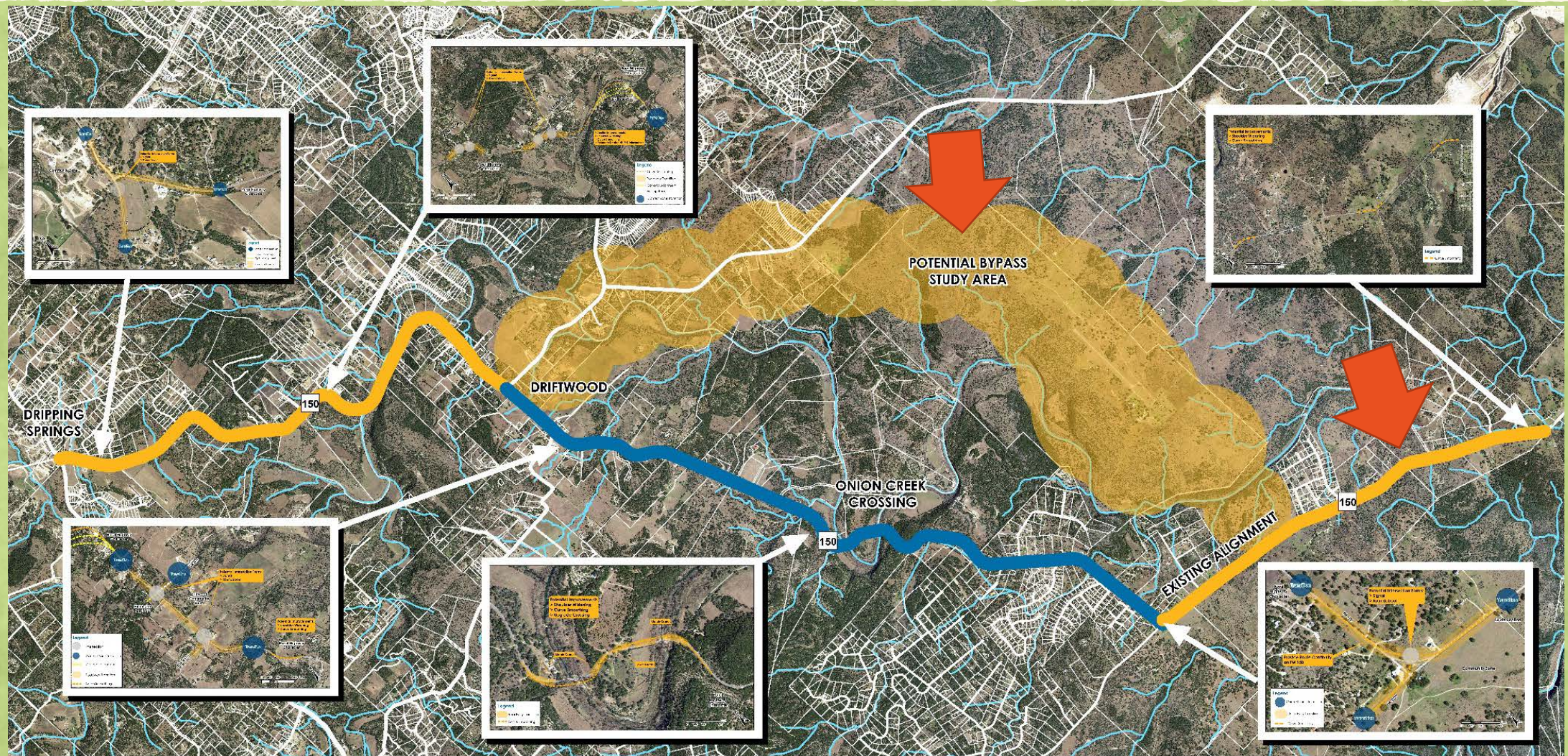
COMMUNITY ZONES

Considerations:

- Transition zones
- Gateway treatments
- Target speed
- Bicycle, pedestrian, equestrian accommodations
- Intersection forms
- Signage (wayfinding, historical, business)



CORRIDOR BY SECTION



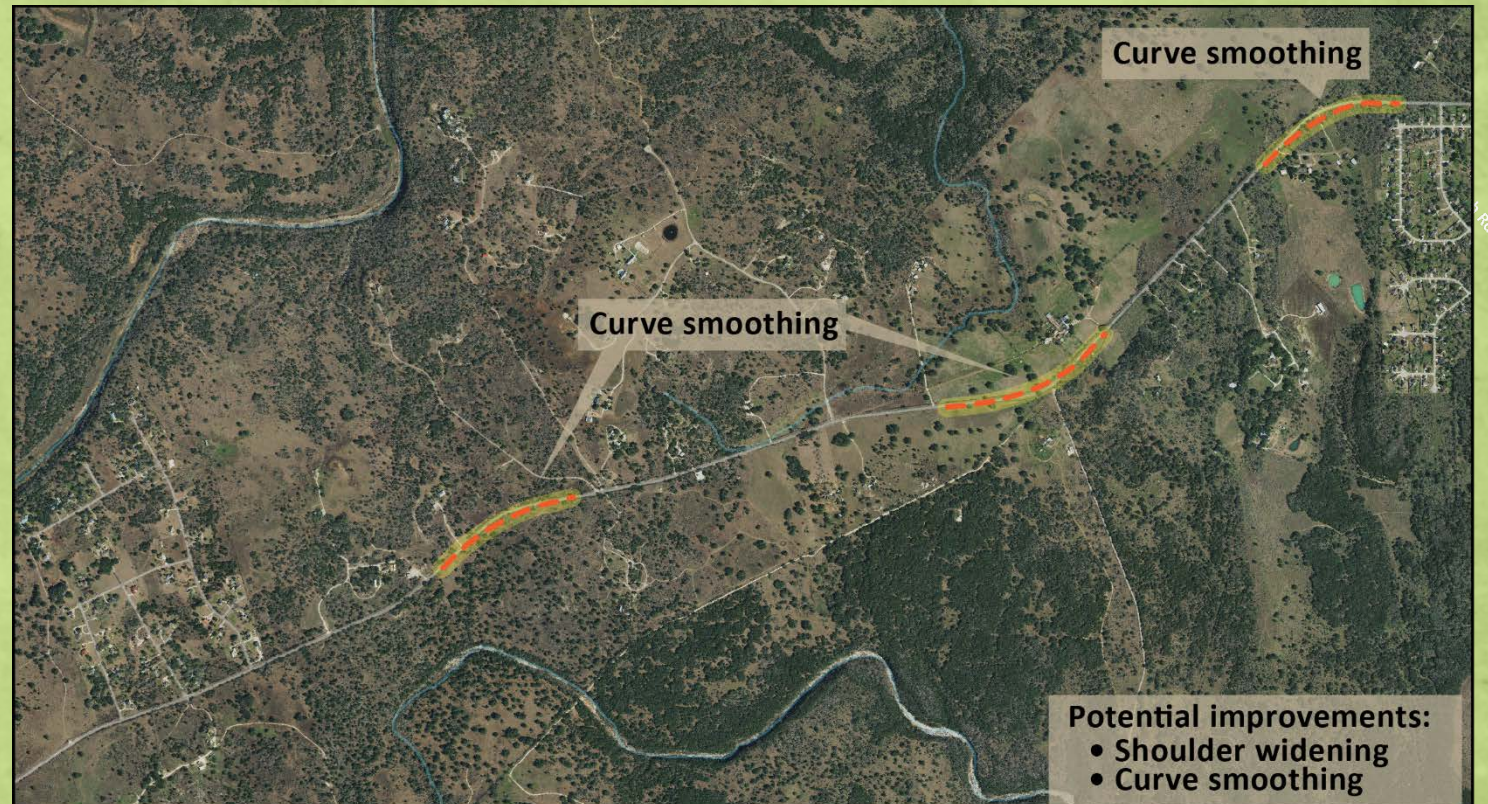
ARROYO RANCH TO FM 3237

Potential Improvements:

- Shoulder widening
- Curve smoothing
- Super-two section on ends of corridor
- Locate bypass connection

Considerations:

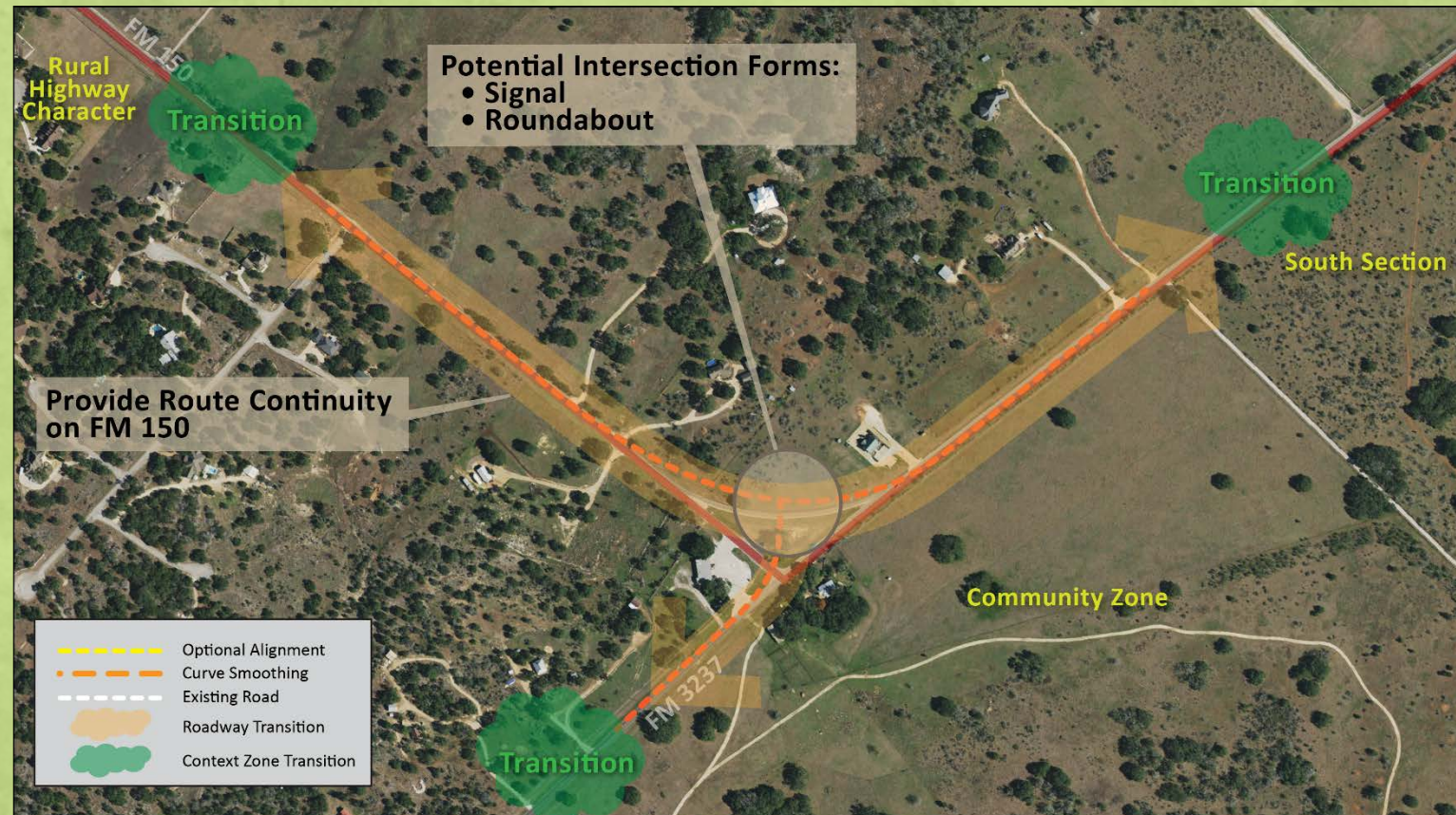
- Target speed
- Bicycle, pedestrian, equestrian accommodations
- Signage
- Delineation



ARROYO RANCH TO FM 3237

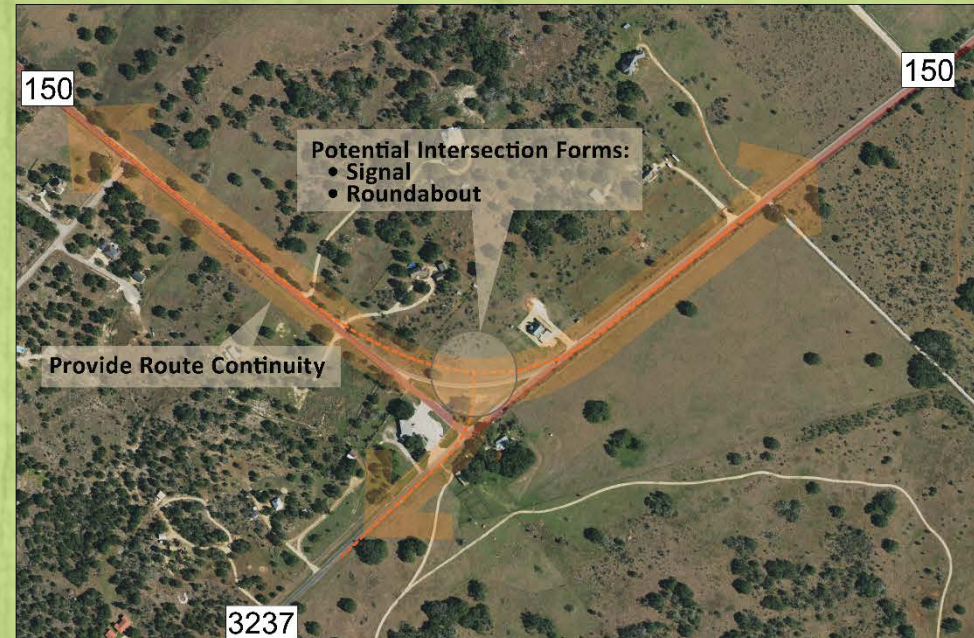
Considerations:

- Transition zones
- Gateway treatments
- Target speed
- Bicycle, pedestrian, equestrian accommodations
- Intersection forms and alignment
- Signage

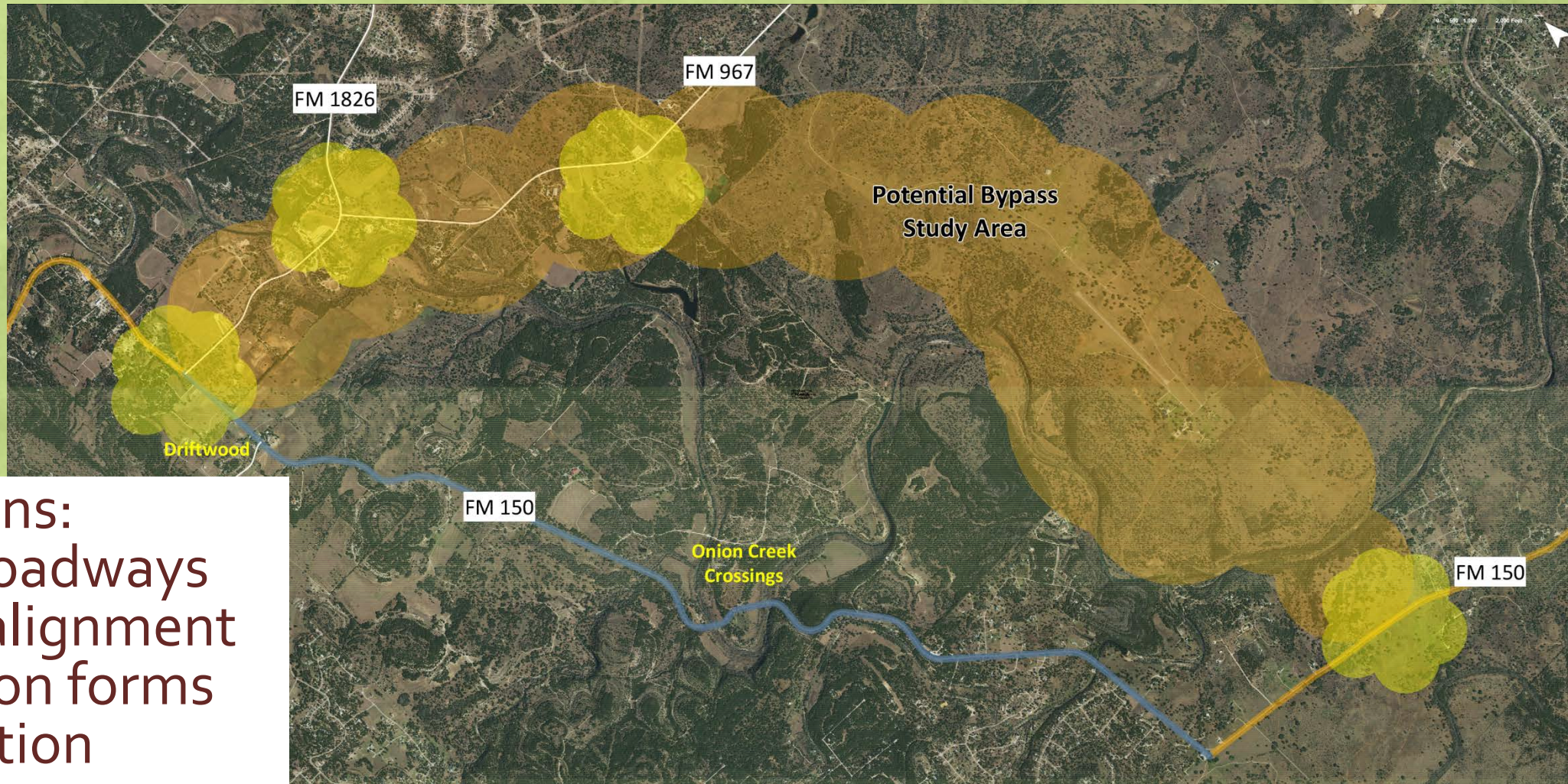


ARROYO RANCH TO FM 3237

- Intersection forms
 - Stop control
 - Traffic signal
 - Roundabout
 - Based on community input and warrants
- Alignment
 - FM 150 continuous route
 - Existing alignment
 - Consider bypass



BYPASS



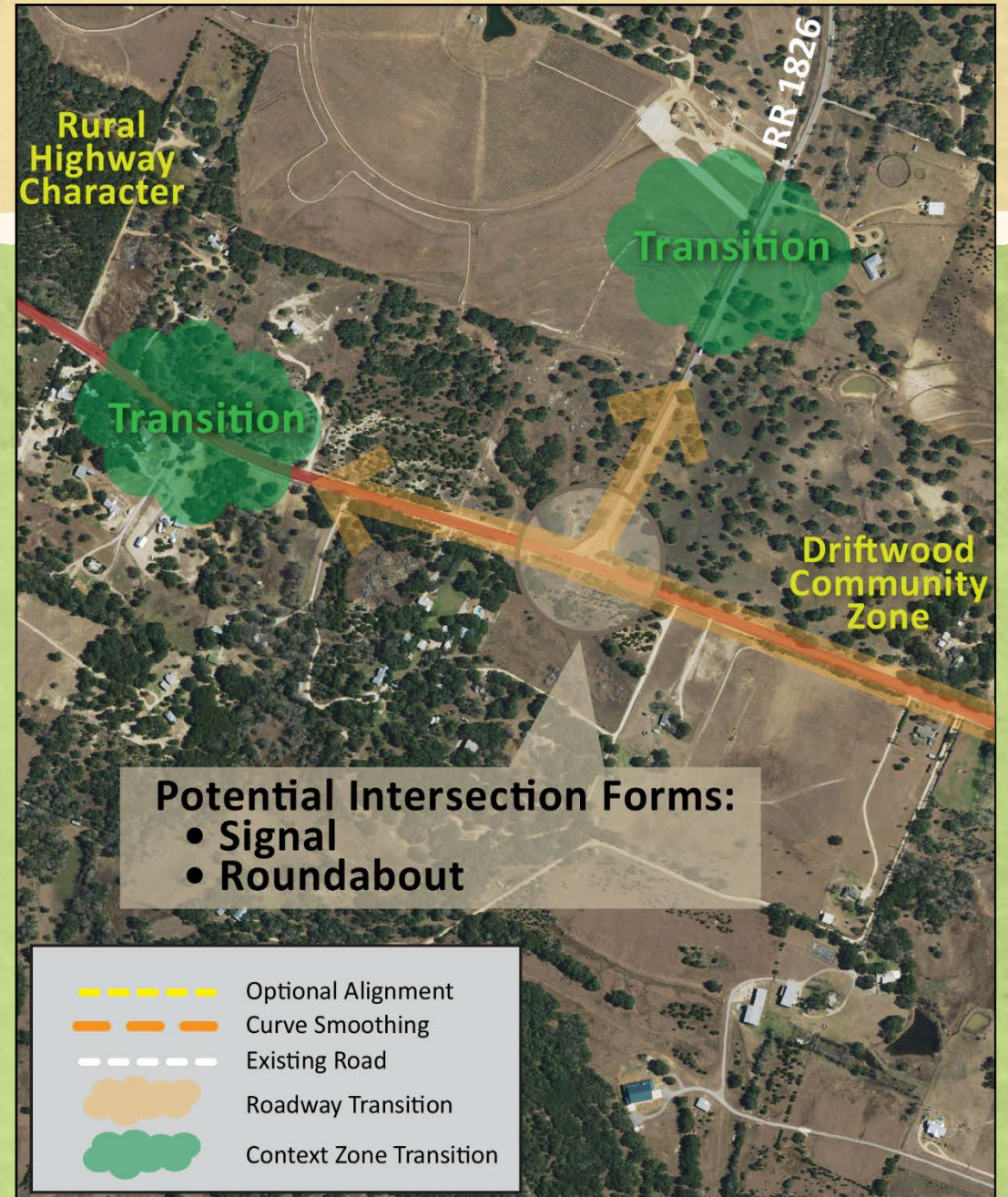
Considerations:

- Existing roadways and new alignment
- Intersection forms
- Cross-section

FM 1826 to RR 12

Considerations:

- Transition zones
- Gateway treatments
- Target speed
- Bicycle, pedestrian, equestrian accommodations
- Intersection forms
- Signage



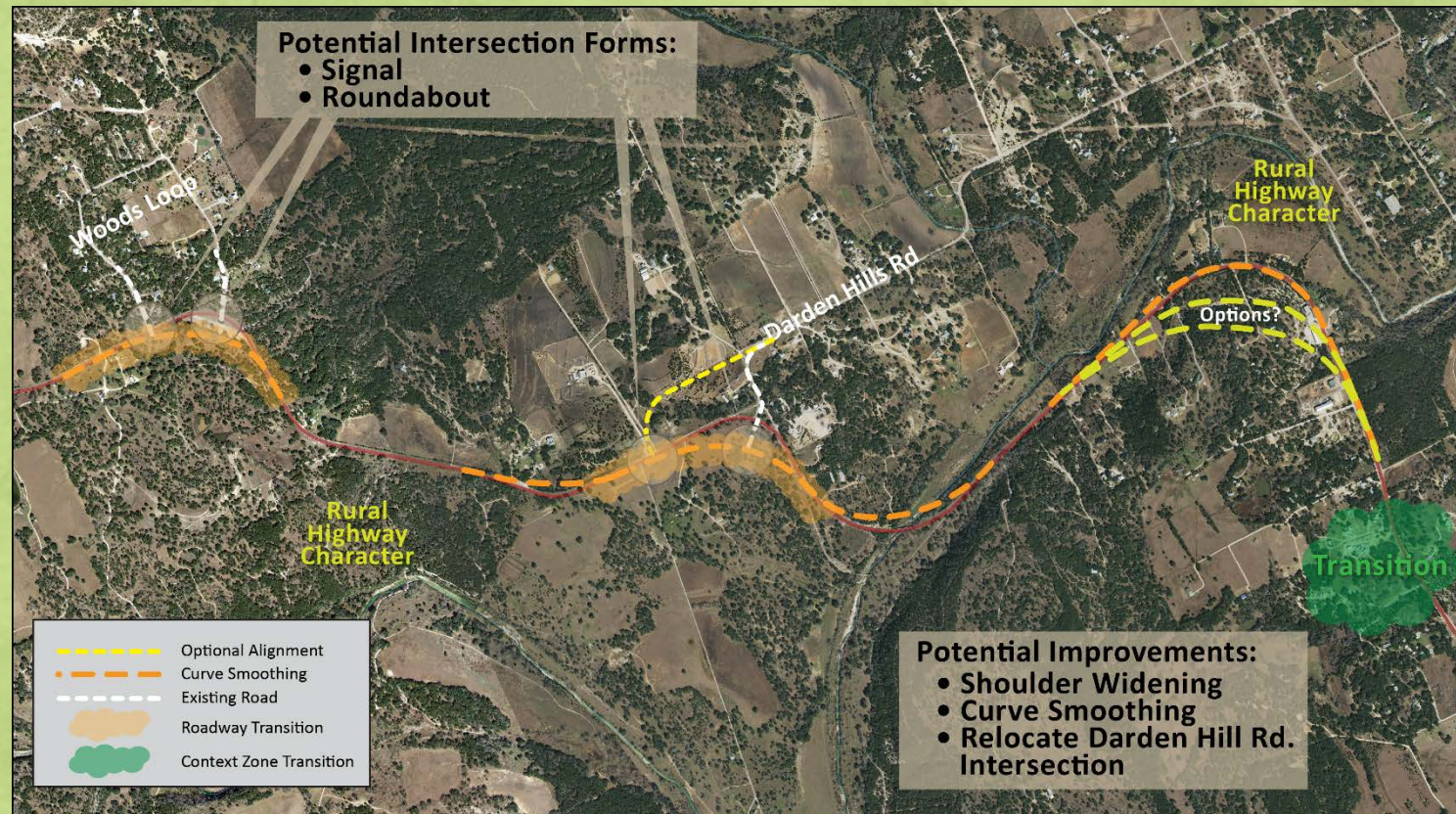
FM 1826 to RR 12

Potential Improvements:

- Shoulder widening
- Curve smoothing
- Super-two section on ends of corridor

Considerations:

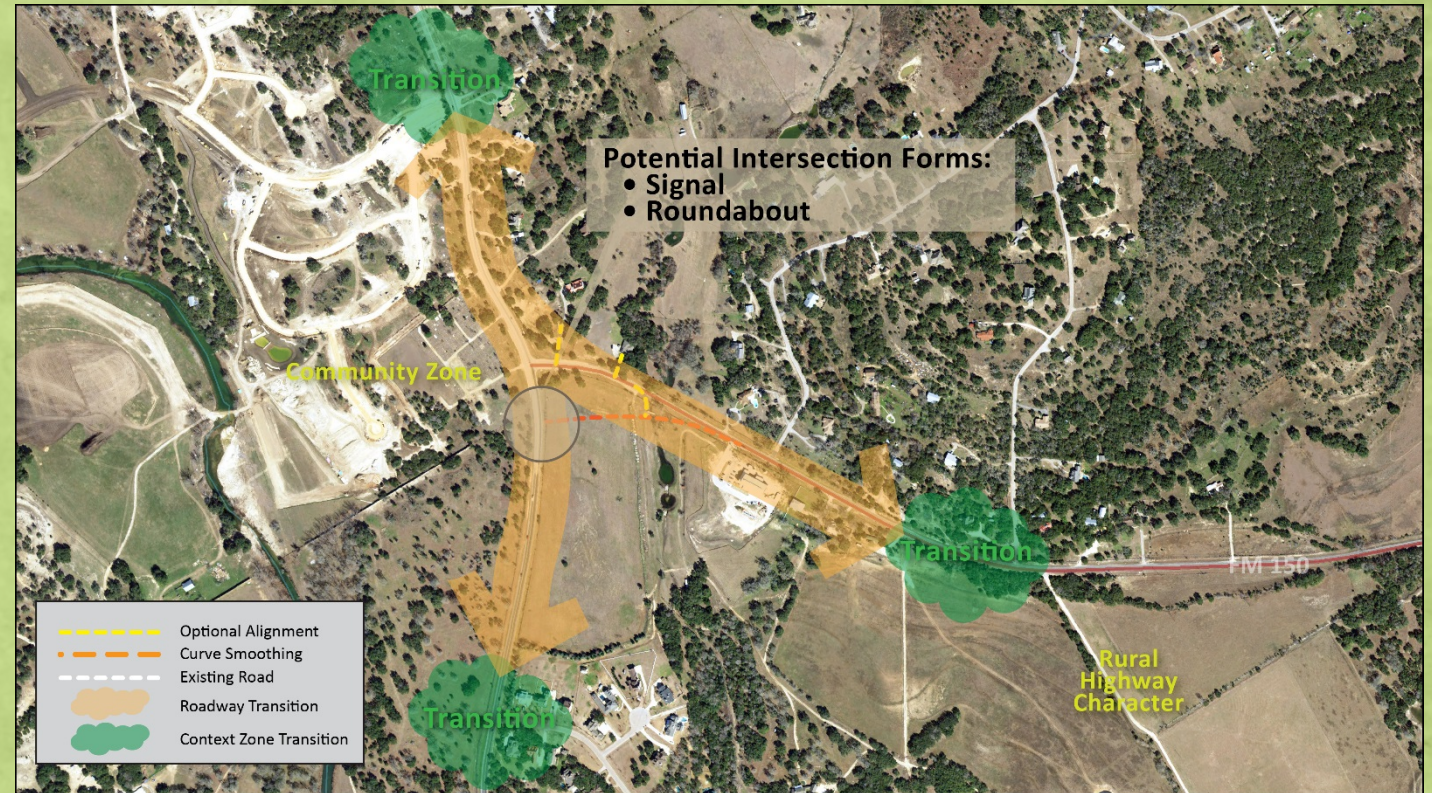
- Target speed
- Bicycle, pedestrian, equestrian accommodations
- Signage
- Delineation



FM 1826 to RR 12

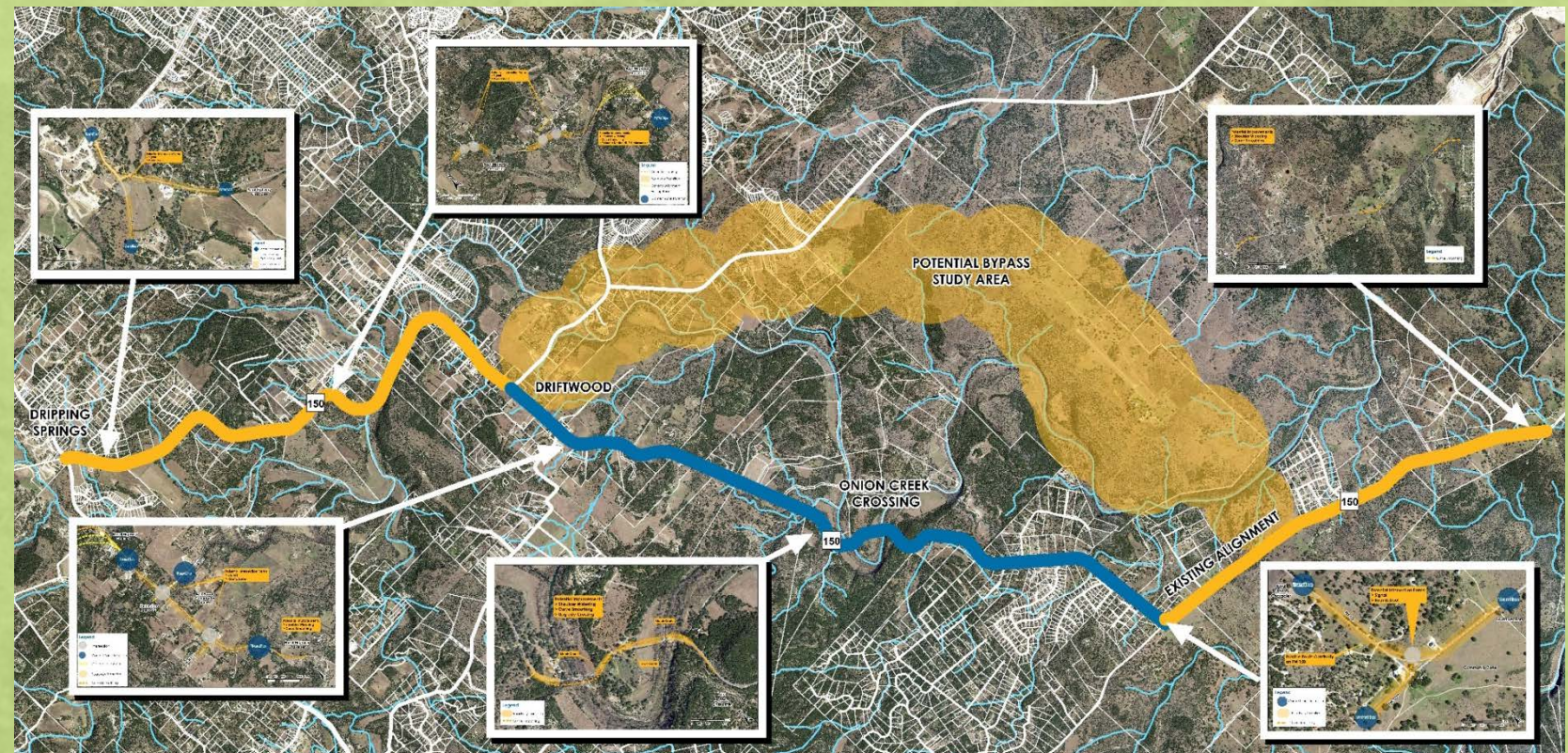
Considerations:

- Transition zones
- Gateway treatments
- Target speed
- Bicycle, pedestrian, equestrian accommodations
- Intersection forms
- Signage



PLANNING EXERCISE

- Maps of corridor divided by segment
- Provide your input on considerations shown at each station



NEXT STEPS

- Review feedback received tonight
- Refine concepts for Arroyo Ranch to FM 3237 and proposed bypass route, considering:
 - Updated traffic counts and crash data
 - Updated human and natural environmental constraint data
 - Feedback from planning exercise
 - Refined base mapping
- Next public meeting: Thursday, April 27, 2017

QUESTIONS

Let's take 10-20 minutes for questions

STAYING IN TOUCH

For study information:

512-533-9100 Ext. 17

characterplan@improvefm150.com

Email updates: Email characterplan@improvefm150.com
with Email Updates in the subject line

Project website: www.improvefm150.com