



FM 1826 to RR 12

➔ **Target speed:** what speed would you like to target on this segment?
Put dot by speed:

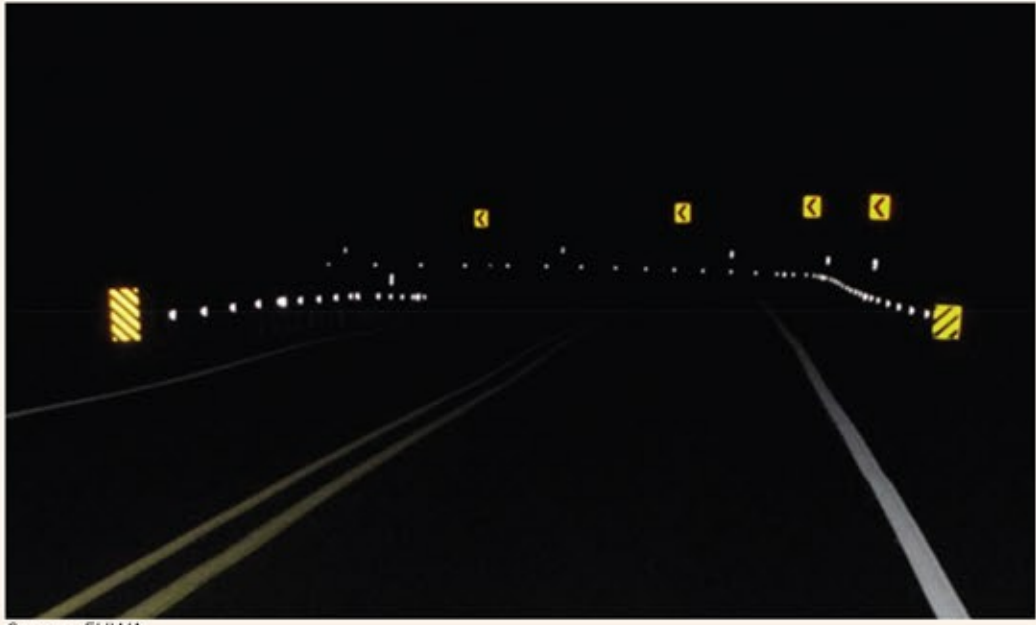
45 mph

50 mph

55 mph

Other?

➔ **Delineation:** where might delineation be helpful to indicate curves in the roadway or intersections?



➔ **Bicycle, pedestrian, equestrian accommodations:** are these a priority along the segment? If so, would you prefer to see a wider paved shoulder or separated path?



➔ **Signage:** would you like to see historic, directional, or business signage? Where?



FM 1826 to RR 12

- ➔ **Darden Hill Rd Alignment:** are you interested in adjusting the alignment of Darden Hill Road to a straighter section of FM 150?
- ➔ **Intersection form:** are you interested in stop control, a traffic signal or roundabout?
The traffic control is also influenced by traffic volumes and national warrants.





Transition

FM 150

RR 12

Transition

Transition

FM 1826 to RR 12 - Intersection of RR 12

➔ **Target speed:** what speed would you like to target at the community zone?

Put dot by speed:

25 mph

30 mph

35 mph

45 mph

Other?

➔ **Gateway treatments:** what gateway treatments are you interested seeing?

Examples include signage, landscaping, change in cross-section to include median/curbing



➔ **Bicycle, pedestrian, equestrian accommodations:** are there desired crossing locations?

➔ **Signage:** would you like to see historic, directional, or business signage? Where?



FM 1826 to RR 12 - Intersection of RR 12

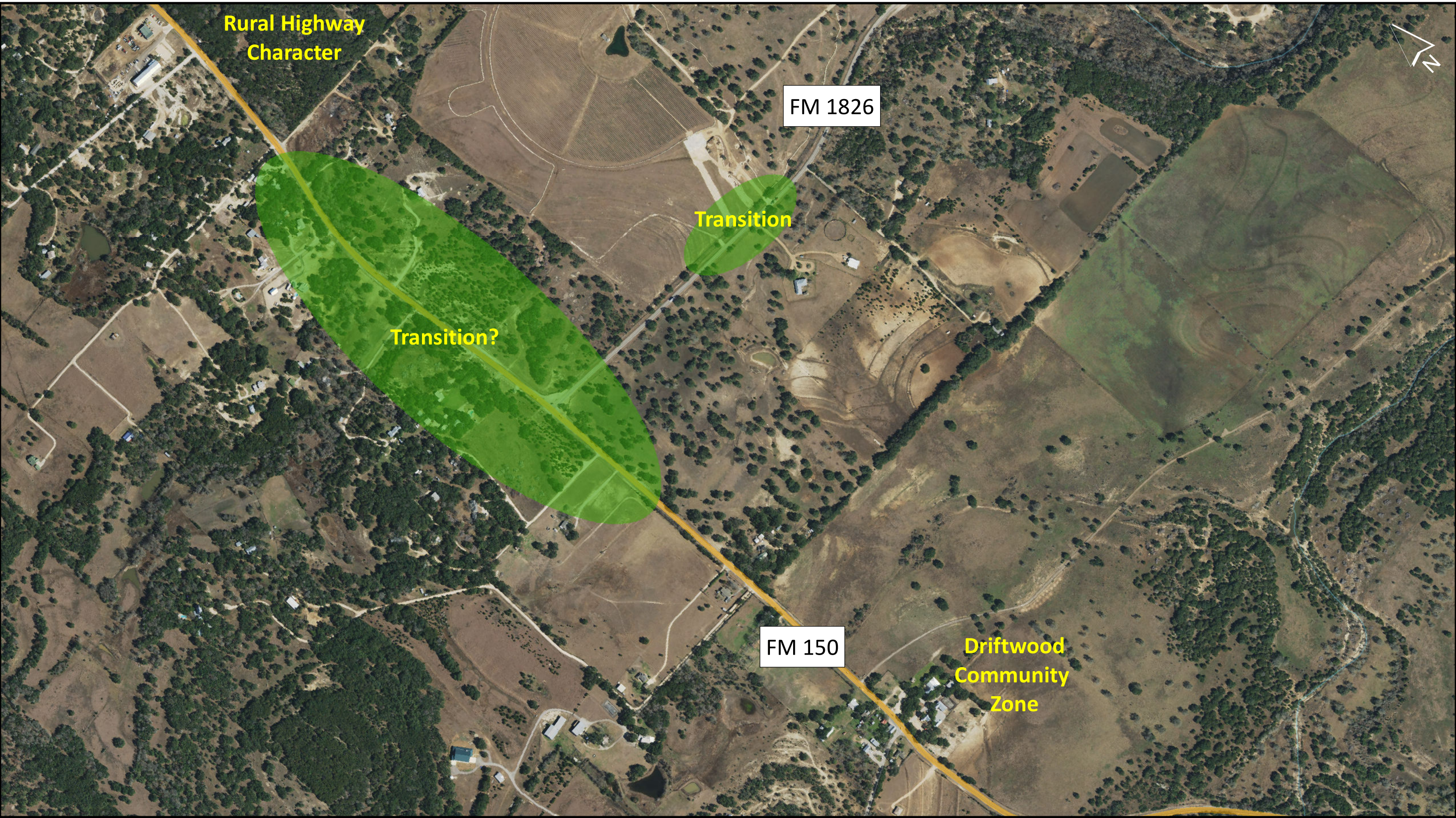
➔ **Intersection form:** are you interested in stop control, a traffic signal or roundabout?

The traffic control is also influenced by traffic volumes and national warrants.

Realigning the intersection would provide more space to accommodate an upgraded intersection.

A concept showing the potential realignment is provided below:





Rural Highway
Character

FM 1826

Transition

Transition?

FM 150

Driftwood
Community
Zone

FM 1826 to RR 12 - Intersection of FM 1826

➔ **Target speed:** what speed would you like to target at the intersection of FM 1826?

Put dot by speed:

25 mph

30 mph

35 mph

45 mph

Other?

➔ **Target speed:** what speed would you like to target approaching Driftwood?

Put dot by speed:

25 mph

30 mph

35 mph

45 mph

Other?

➔ **Driftwood Community Zone:** where do you feel the Driftwood Community Zone starts?
Should the transition occur north or south of 1826?



FM 1826 to RR 12 - Intersection of FM 1826

- ➔ **Intersection form:** are you interested in stop control, a traffic signal or roundabout?

The traffic control is also influenced by traffic volumes and national warrants.

- ➔ **Gateway treatments:** what gateway treatments are you interested seeing?

Examples include signage, landscaping, change in cross-section to include median/curbing



- ➔ **Bicycle, pedestrian, equestrian accommodations:** are there desired crossing locations?

- ➔ **Signage:** would you like to see historic, directional, or business signage? Where?



FM 1826 to RR 12

Target Speed

What speed would you like to target on this segment? Circle one: 45 mph, 50 mph, 55 mph, Other _____

Comments

Delineation

Where might delineation be helpful to indicate curves in the roadway or intersections?

Comments

Bicycle, Pedestrian, and Equestrian Accommodations

Are these a priority along the segment? If so, would you prefer to see a wider paved shoulder or a separated path?

Comments

Signage

Would you like to see historical, directional, or business signage? Where?

Comments

FM 1826 to RR 12 Station

Darden Hill Road Alignment

Are you interested in adjusting the alignment of Darden Hill Road to a straighter section of FM 150?

Comments

Intersection of Darden Hill Road and FM 150

Are you interested in stop control, a traffic signal, or roundabout?

Comments



Potential Intersection Alignment

FM 1826 to RR 12 Station

Intersection of FM 1826

Target Speed – Intersection of FM 1826

What speed would you like to target at the intersection of FM 1826? Circle one: 25 mph, 30 mph, 35 mph, 45mph, Other_____

Target Speed – Approaching Driftwood

What speed would you like to target approaching Driftwood? Circle one: 25 mph, 30 mph, 35 mph, 45 mph, Other_____

Driftwood Community Zone

Where do you feel the Driftwood Community Zone starts? Should the transition occur north or south of 1826?

Comments

Intersection of FM 1826

Are you interested in stop control, a traffic signal, or roundabout?

Comments

Gateway Treatments

What gateway treatments are you interested in seeing? (Examples include: signage, landscaping, change in cross-section to include median/curbing)

Comments

FM 1826 to RR 12 Station

Bicycle, Pedestrian, and Equestrian Accommodations

Are there desired crossing locations?

Comments

Signage

Would you like to see historical, directional, or business signage? Where?

Comments

FM 1826 to RR 12 Station

Intersection of RR 12

Target Speed – Intersection of RR 12

What speed would you like to target on this segment? Circle one: 25 mph, 30 mph, 35 mph, 45 mph, Other _____

Gateway Treatments

What gateway treatments are you interested in seeing? (Examples include: signage, landscaping, change in cross-section to include median/curbing)

Comments

Bicycle, Pedestrian, and Equestrian Accommodations

Are there desired crossing locations?

Comments

Signage

Would you like to see historical, directional, or business signage? Where?

Comments

Intersection of RR 12

Are you interested in stop control, a traffic signal, or roundabout?

Comments

FM 1826 to RR 12 Station

Optional:

Name: _____

Email: _____

Address: _____

Phone Number: _____ Zip Code: _____