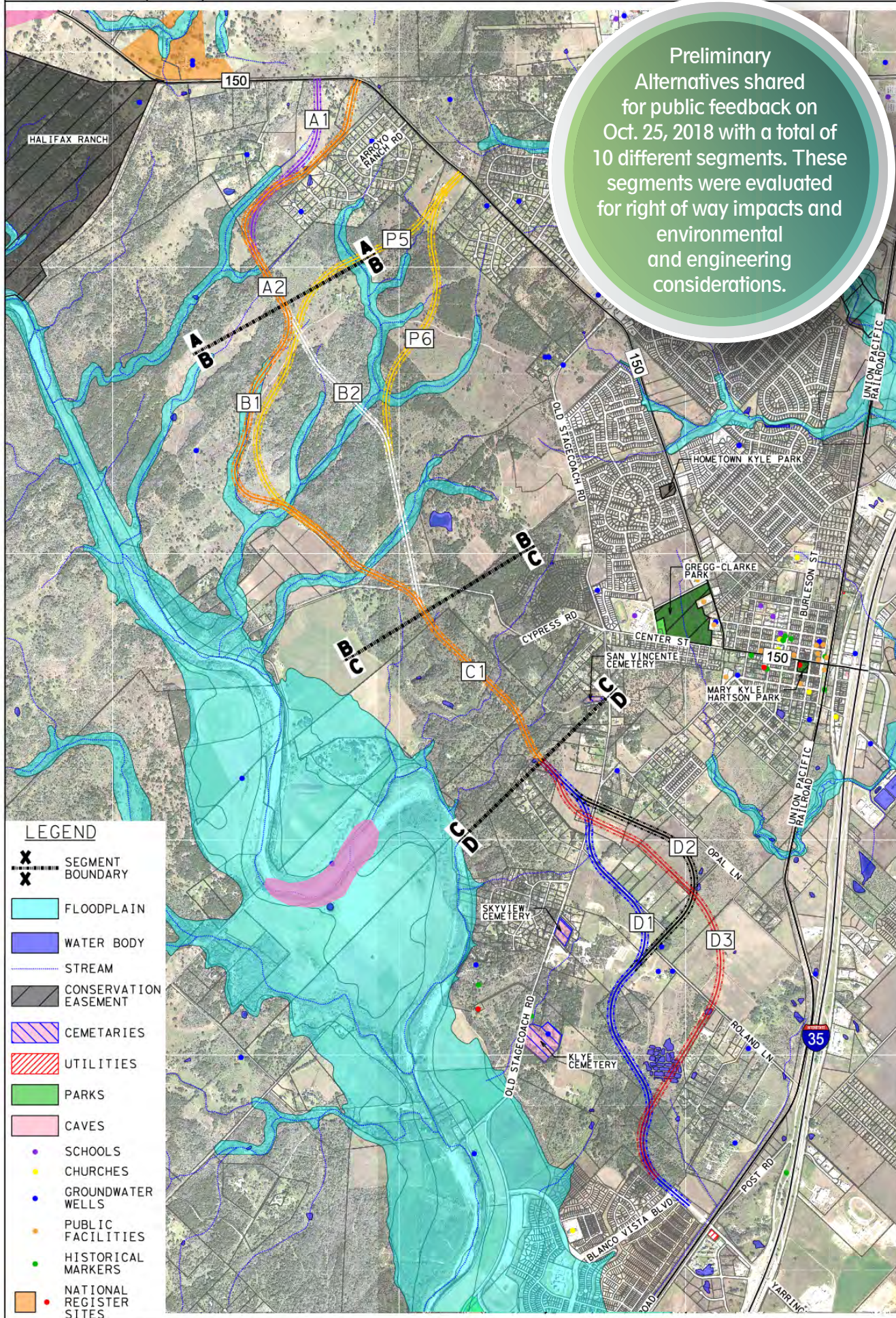




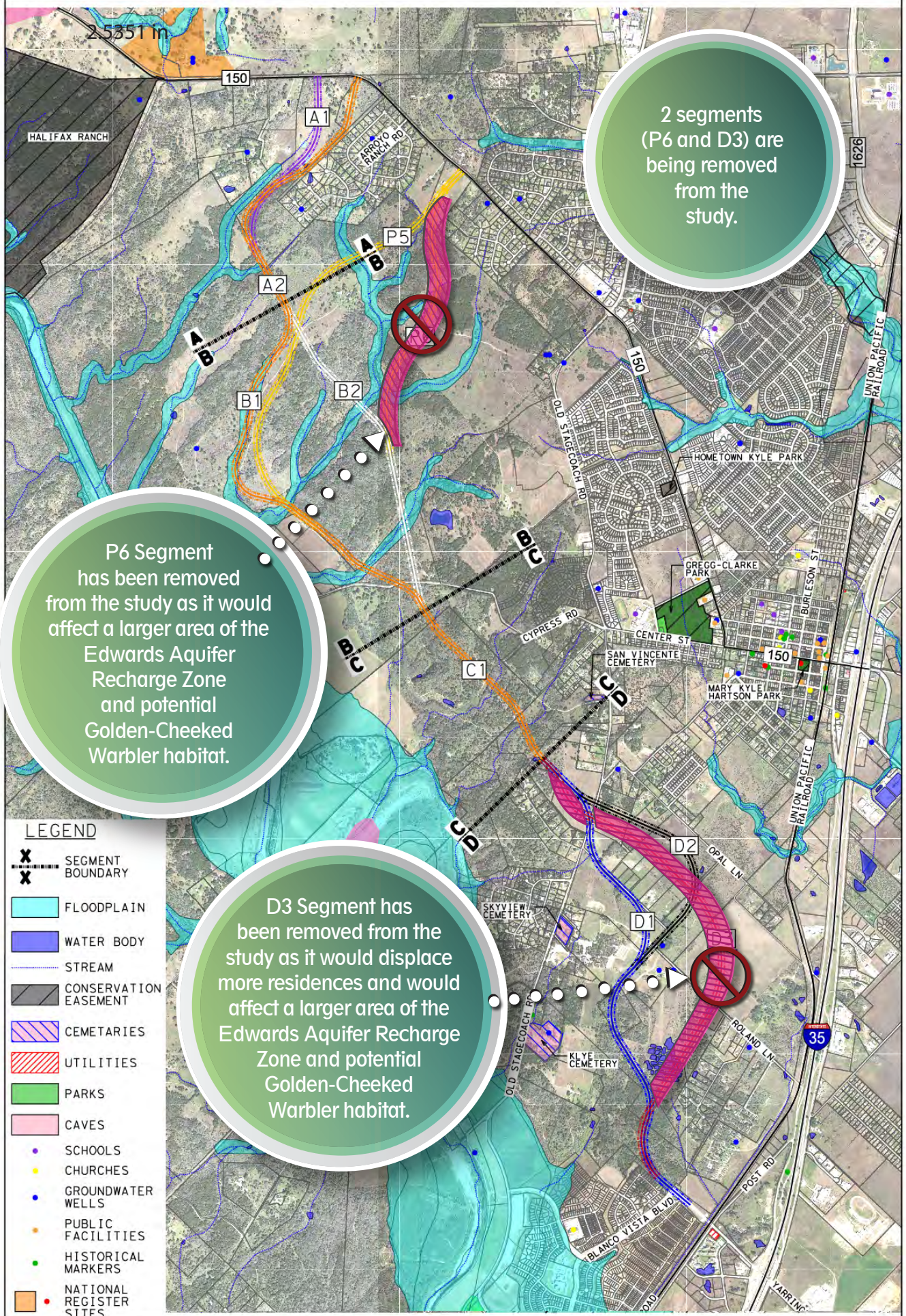
RM 150 PRELIMINARY ALTERNATIVE SEGMENTS

Preliminary Alternatives shared for public feedback on Oct. 25, 2018 with a total of 10 different segments. These segments were evaluated for right of way impacts and environmental and engineering considerations.





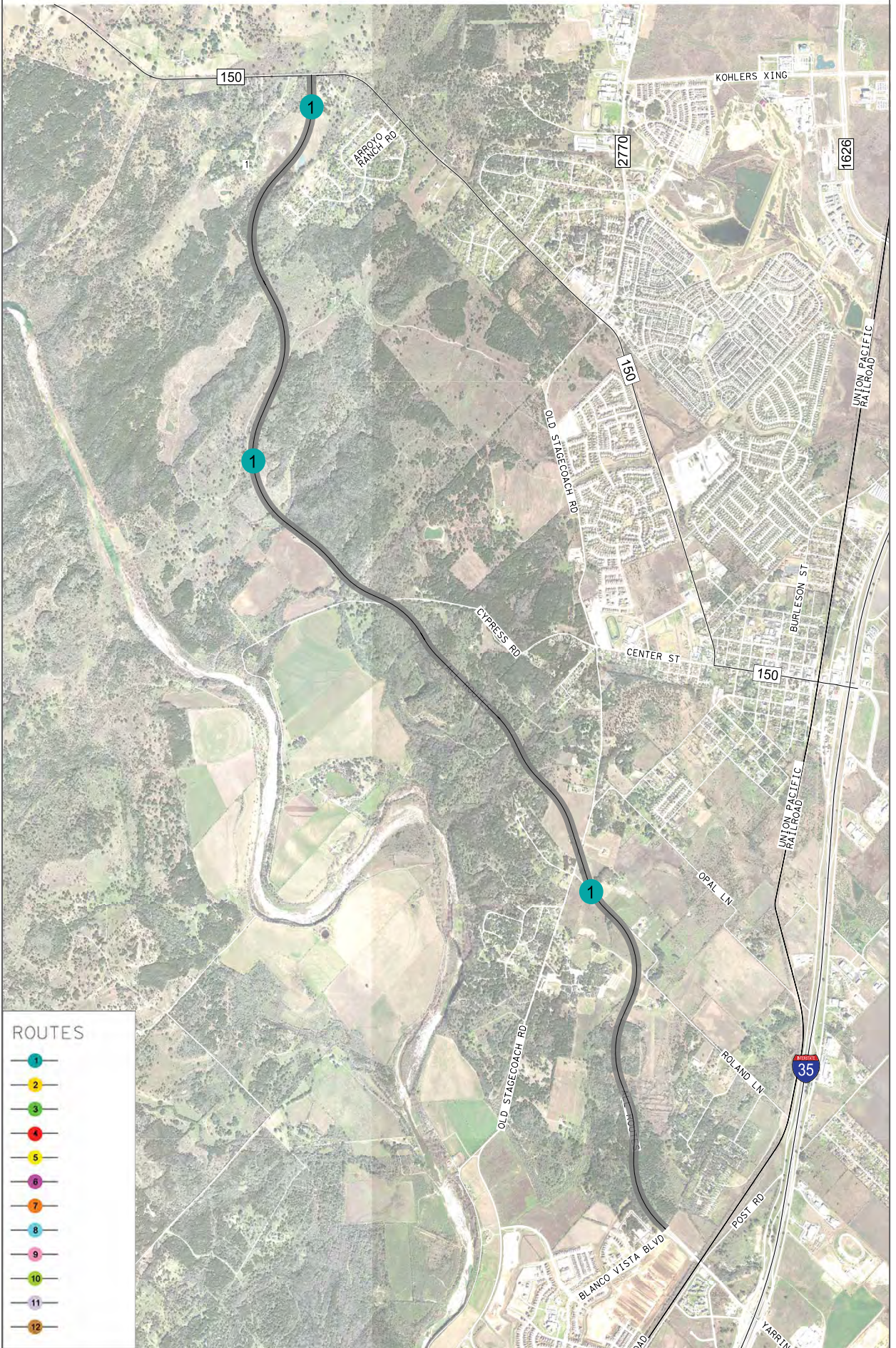
RM 150 PRELIMINARY ALTERNATIVE SEGMENTS





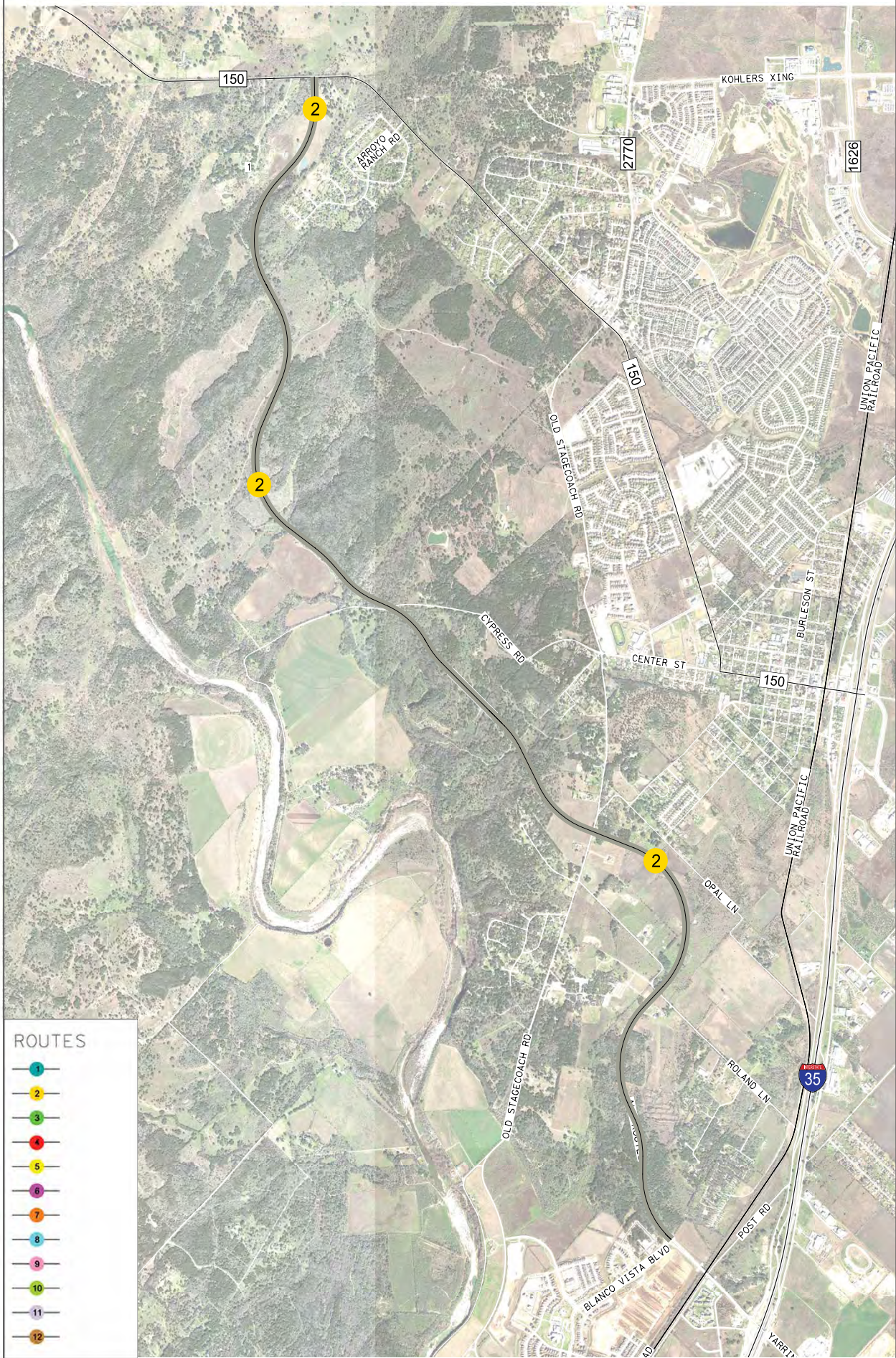


RM 150 REASONABLE ALTERNATIVE ALIGNMENTS



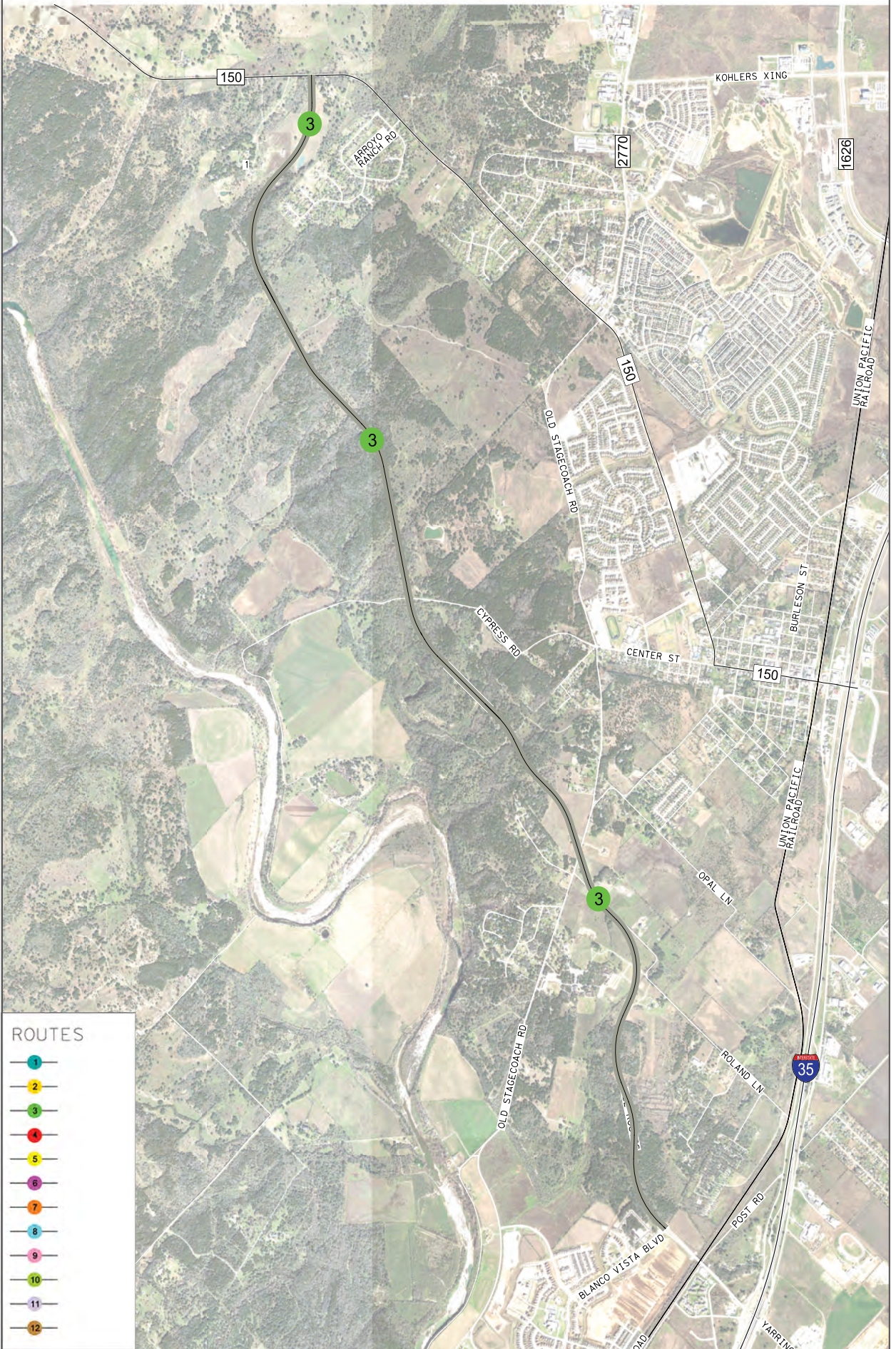


RM 150 REASONABLE ALTERNATIVE ALIGNMENTS



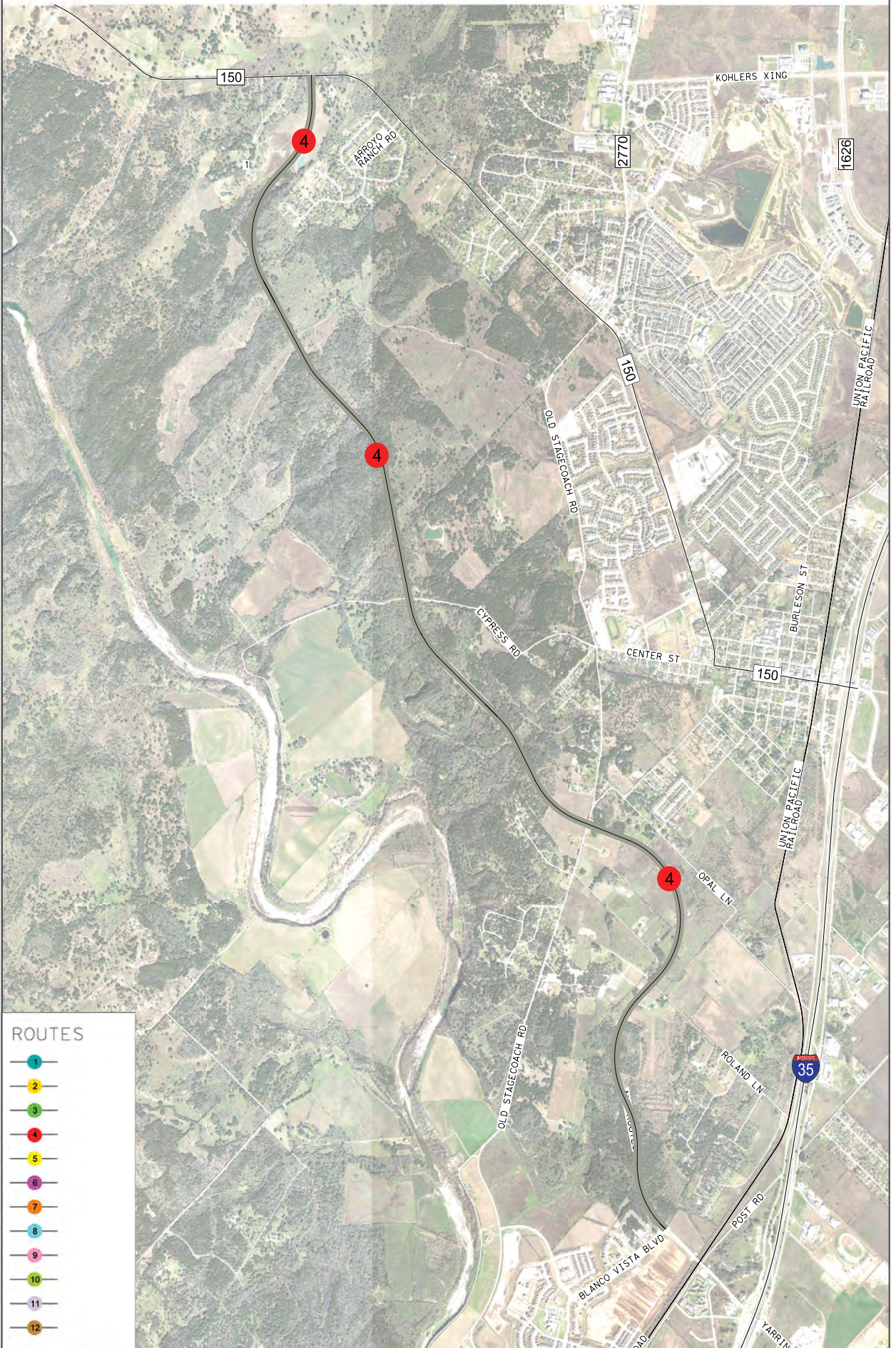


RM 150 REASONABLE ALTERNATIVE ALIGNMENTS



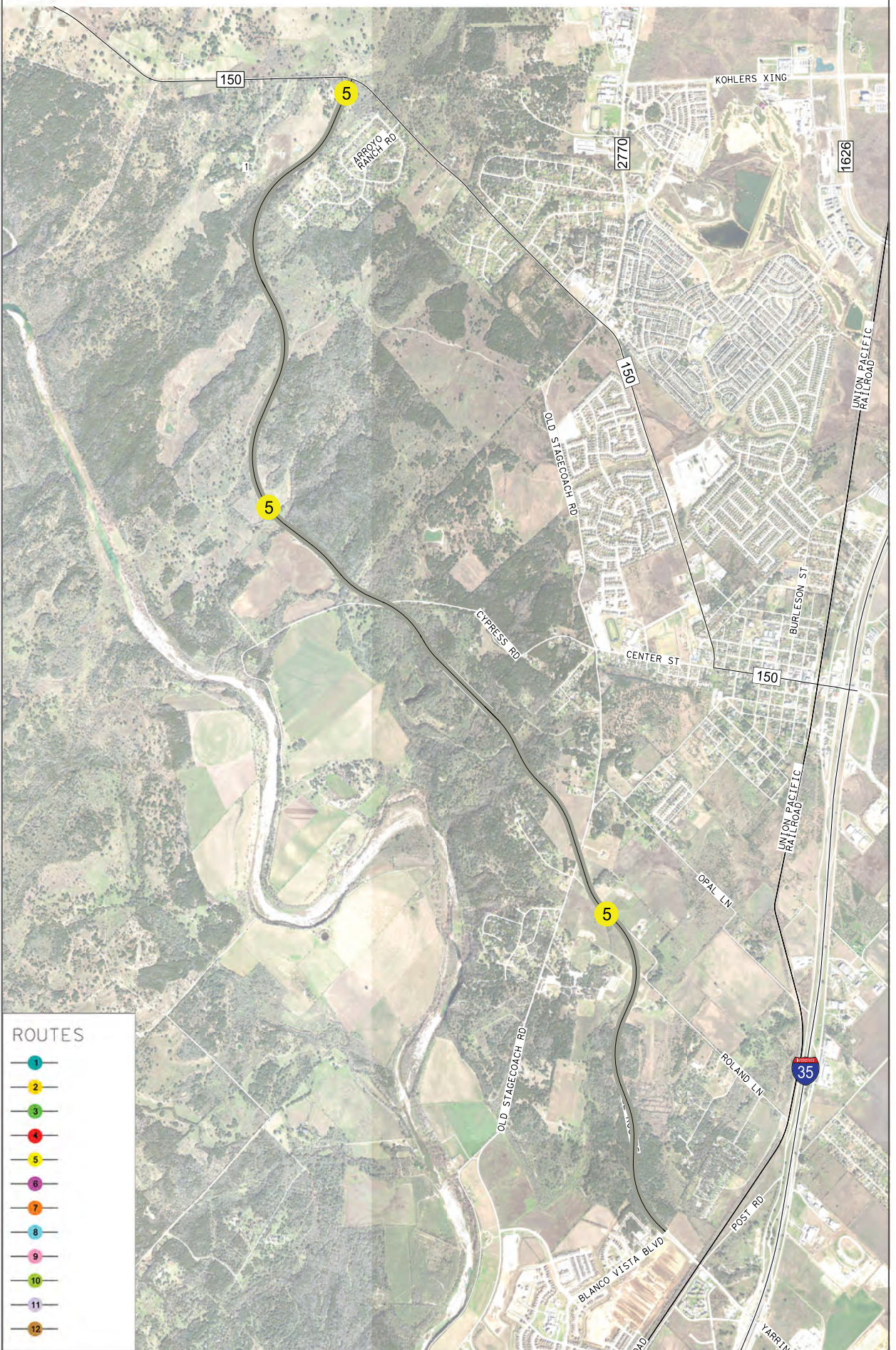


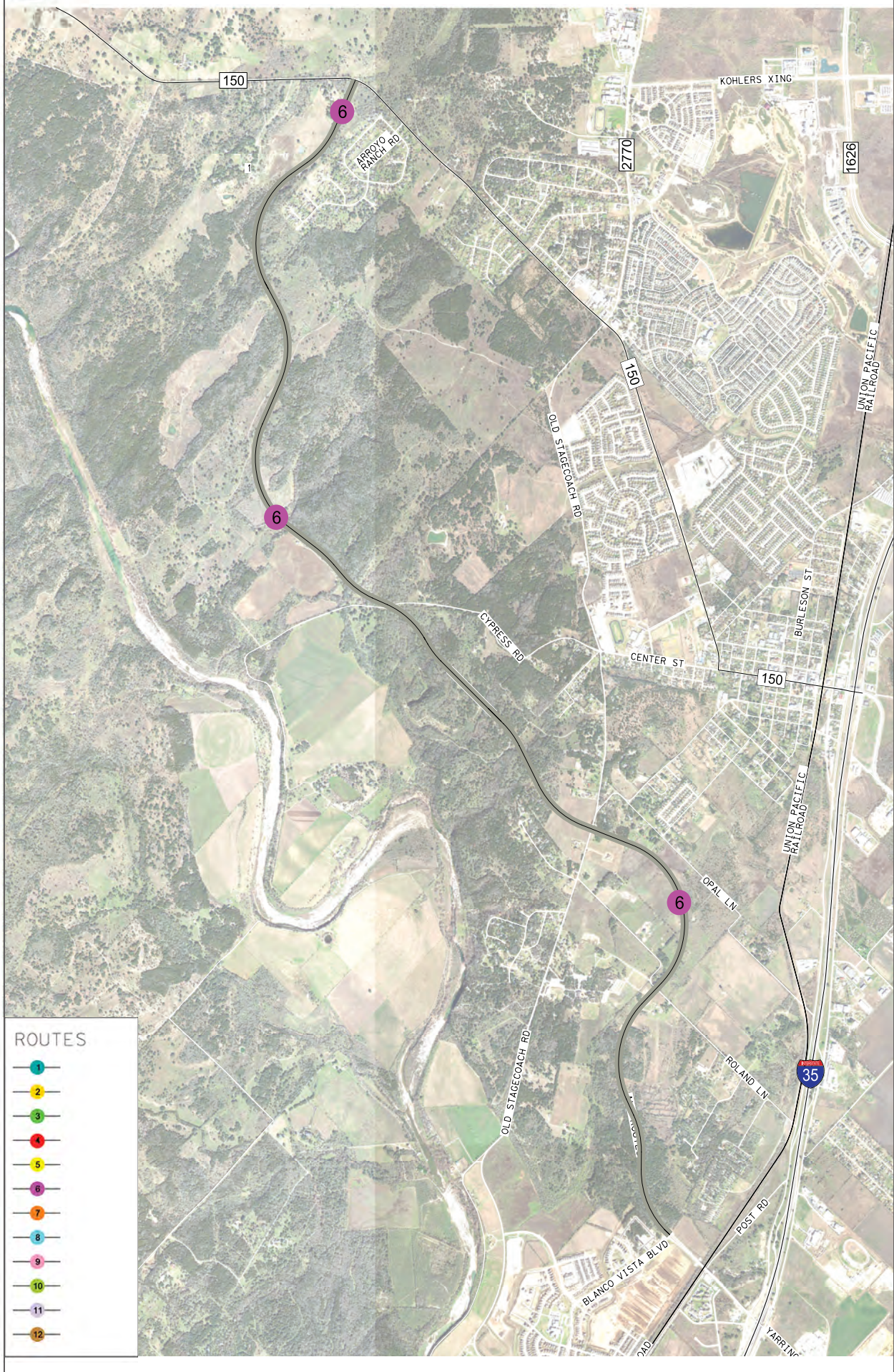
RM 150 REASONABLE ALTERNATIVE ALIGNMENTS





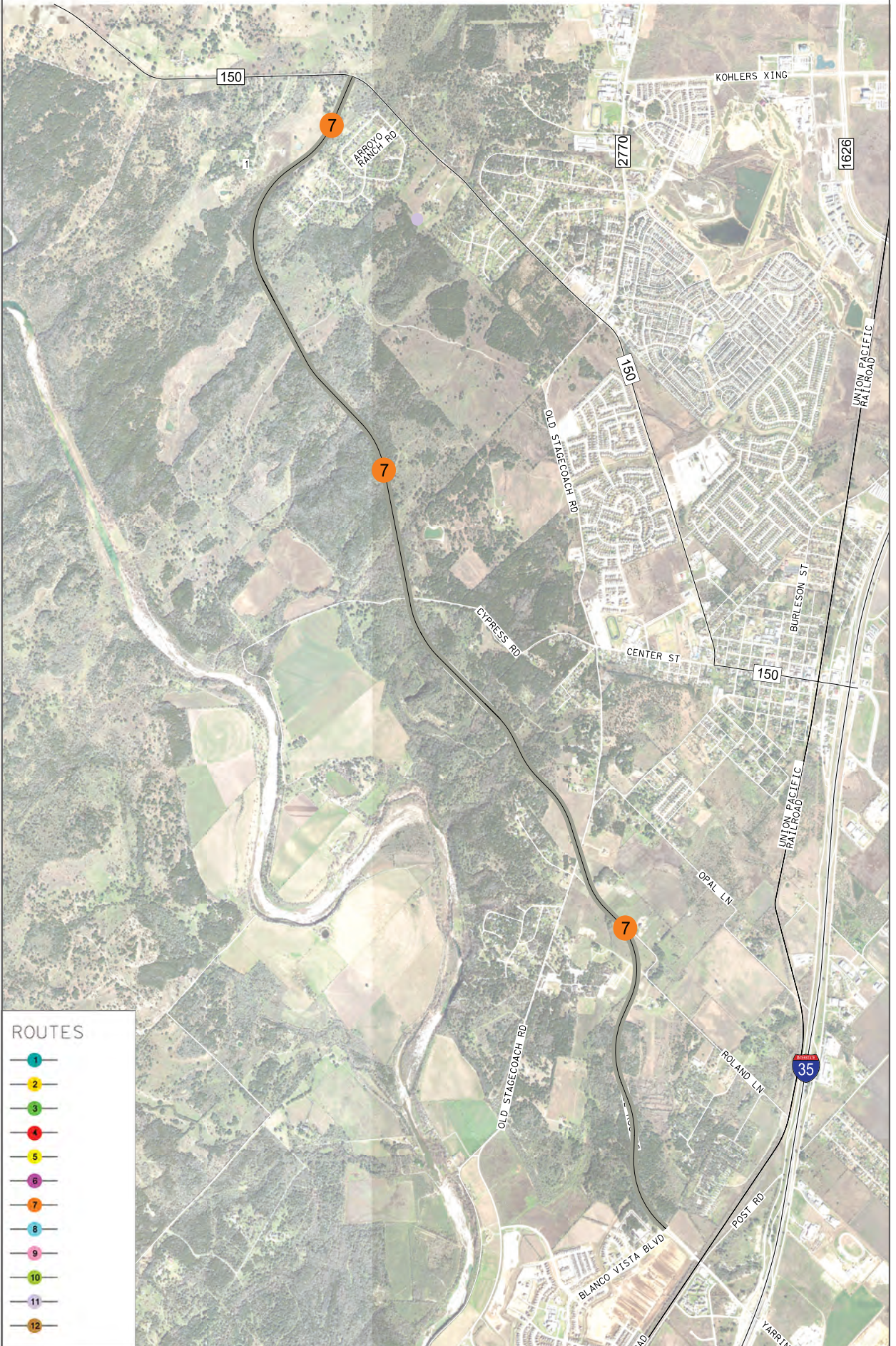
RM 150 REASONABLE ALTERNATIVE ALIGNMENTS





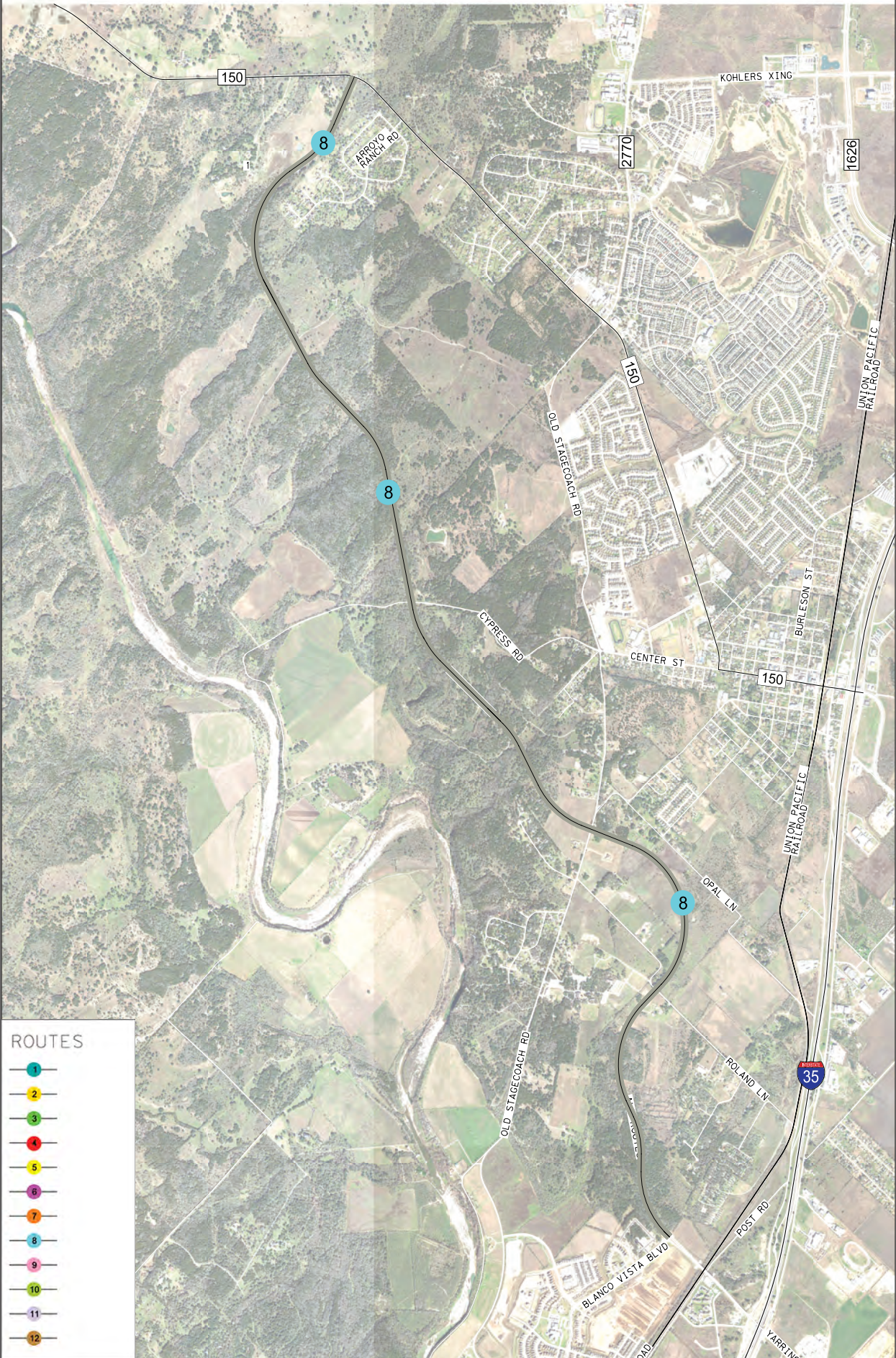


RM 150 REASONABLE ALTERNATIVE ALIGNMENTS





RM 150 REASONABLE ALTERNATIVE ALIGNMENTS

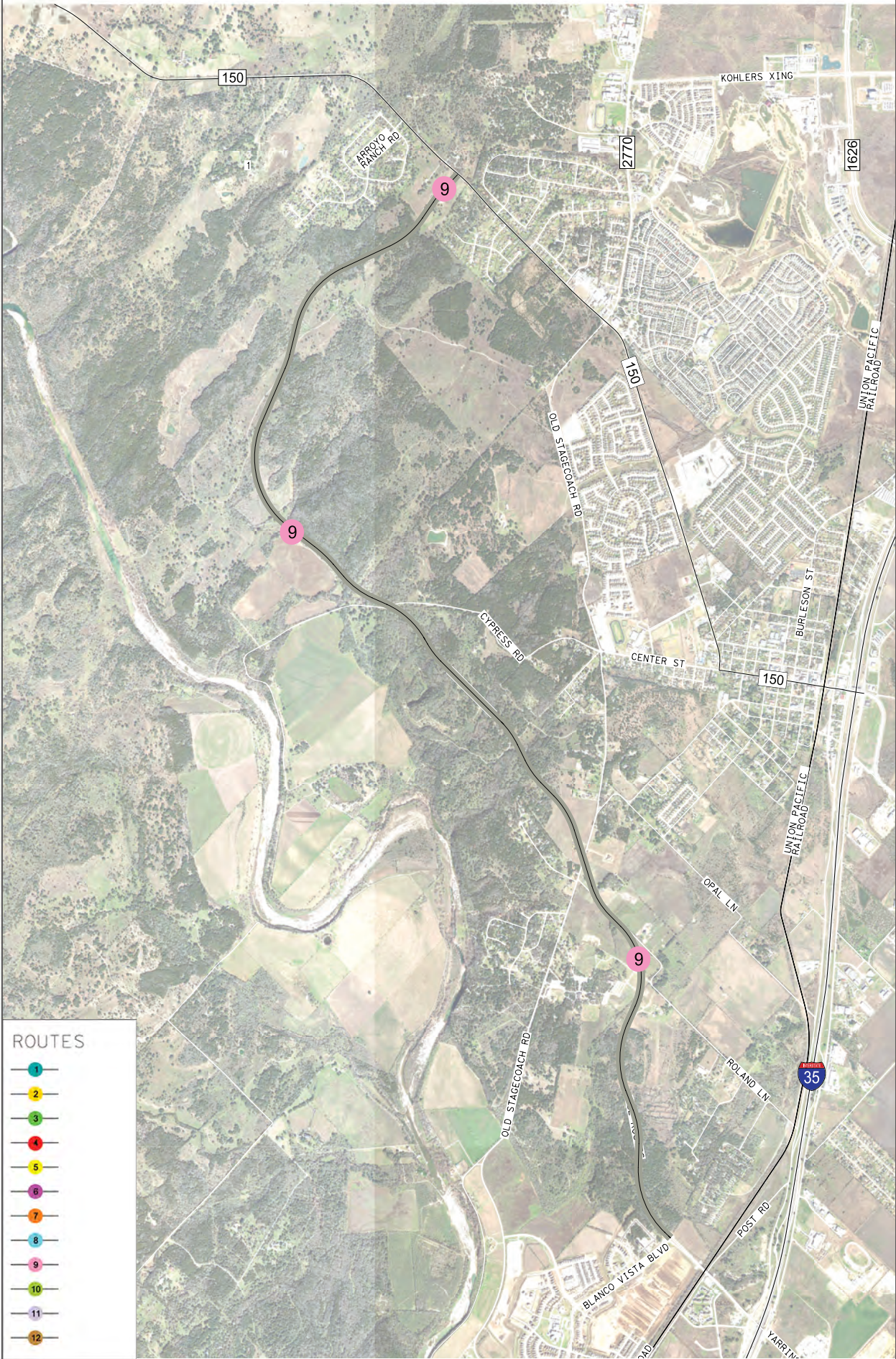


ROUTES

- 1
- 2
- 3
- 4
- 5
- 6
- 7
- 8
- 9
- 10
- 11
- 12

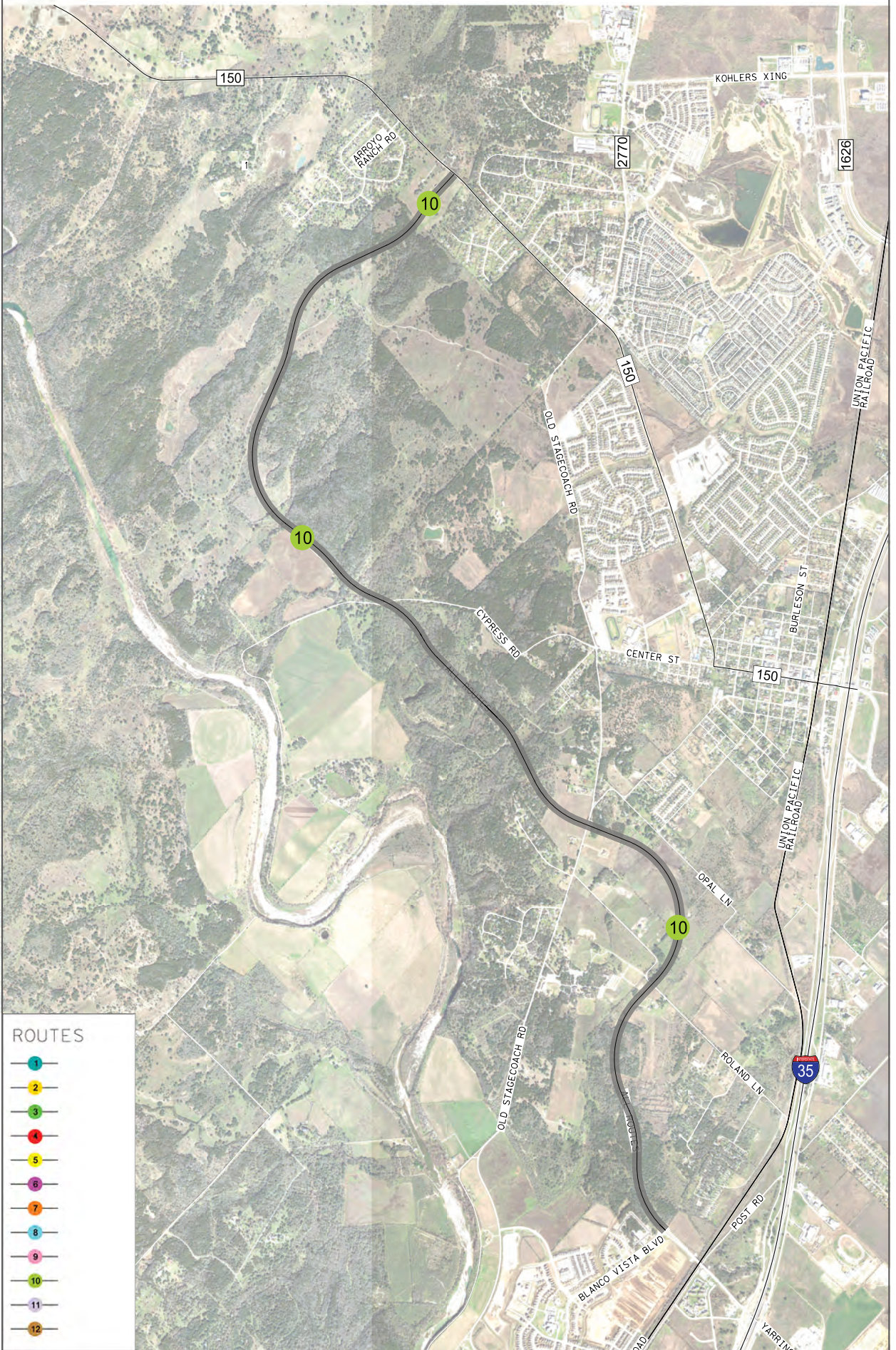


RM 150 REASONABLE ALTERNATIVE ALIGNMENTS



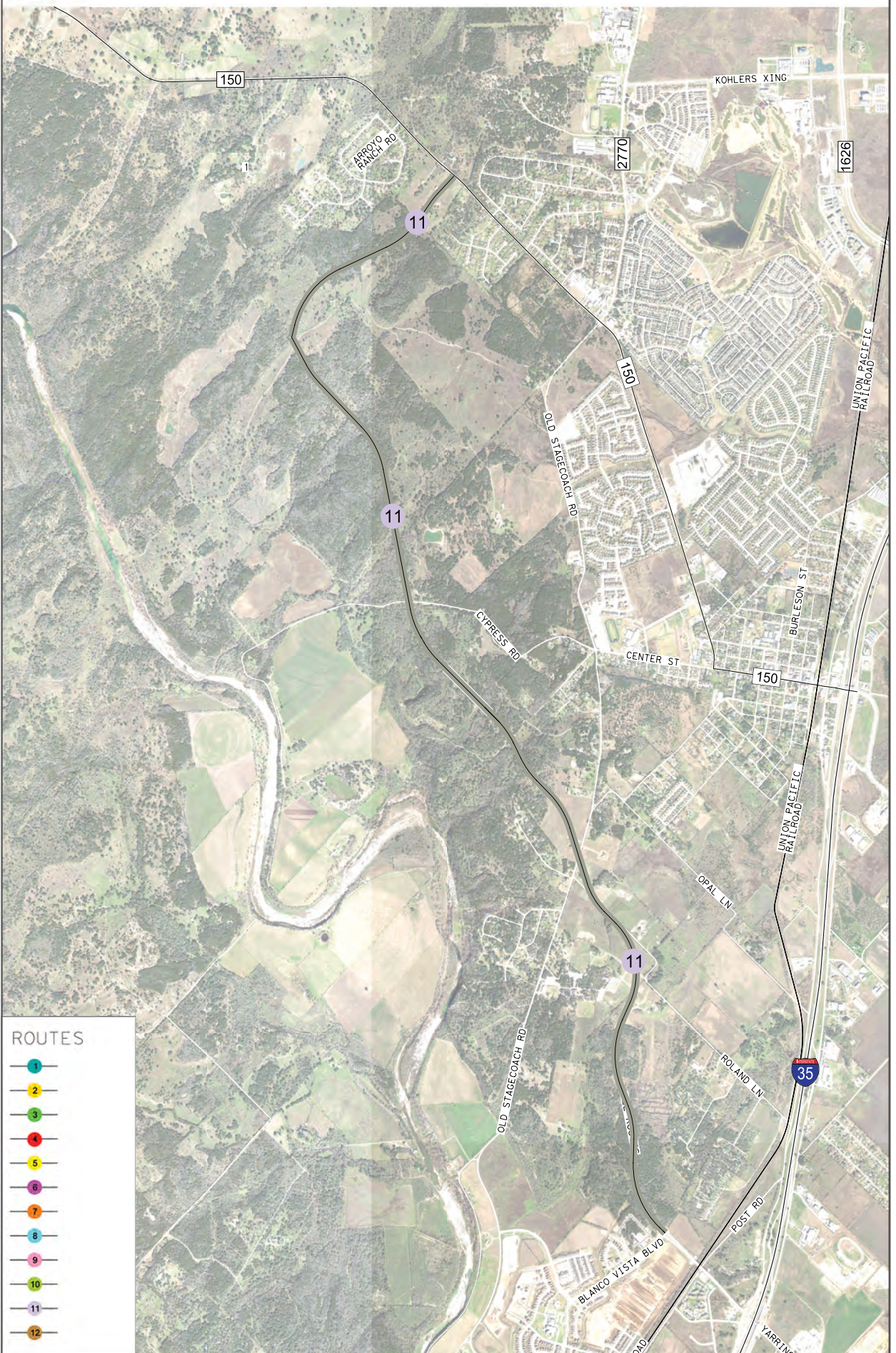


RM 150 REASONABLE ALTERNATIVE ALIGNMENTS





RM 150 REASONABLE ALTERNATIVE ALIGNMENTS





RM 150 REASONABLE ALTERNATIVE ALIGNMENTS

