



DRAFT

Project Coordination Plan

Ranch-to-Market Road 150
From I-35 to Ranch-to-Market 150 West of Kyle
Hays County, Texas
CSJ: 0805-04-028; 0016-17-013

TxDOT Austin District
July 2018

The environmental review, consultation, and other actions required by applicable Federal environmental laws for this project are being, or have been, carried-out by TxDOT pursuant to 23 U.S.C. 327 and a Memorandum of Understanding dated December 16, 2014, and executed by FHWA and TxDOT.

TABLE OF CONTENTS

1.0	PURPOSE OF THE COORDINATION PLAN	1
2.0	PROJECT DESCRIPTION.....	1
2.1	Project Location	1
2.2	Project History	1
3.0	AGENCY ROLES AND RESPONSIBILITIES	2
3.1	Joint Lead Agencies	2
3.2	Participating Agencies.....	2
3.3	Cooperating Agencies	3
4.0	PROJECT COORDINATION	6
4.1	Agency Coordination.....	6
4.2	Public Involvement and Stakeholder Outreach	6
5.0	PROJECT MILESTONES/SCHEDULE	7
6.0	REVISION HISTORY	8

TABLES

Table 3-1	Cooperating and Participating Agencies	3
Table 4-1	Agency Coordination.....	6
Table 4-2	Public Involvement/Stakeholder Outreach.....	7
Table 5-1	Major Project Milestones.....	7
Table 6-1	Revision History.....	8

APPENDICES

Appendix A	Cooperating and Participating Agency Invitation Letters
Appendix B	Draft Public Involvement Plan

This page is intentionally blank.

1.0 PURPOSE OF THE COORDINATION PLAN

In accordance with 23 U.S. Code §139(g), the Texas Department of Transportation (TxDOT) and Hays County (as joint lead agencies) have prepared this coordination plan for the proposed Ranch-to-Market (RM) 150 project in Hays County. This plan is intended to establish a schedule and process for coordinating public and agency participation and comment during the environmental review process. The coordination plan is developed early in the environmental and planning process and will be adjusted and updated as input is received from cooperating and participating agencies and as the complexity of potential environmental issues is identified.

2.0 PROJECT DESCRIPTION

2.1 Project Location

The proposed RM 150 project is located within and west of the city of Kyle, in Hays County, Texas. The limits of the proposed project are from Interstate Highway (I-35) to RM 150 west of Kyle. The existing RM 150 roadway extends from RM 12 in Dripping Springs southeast 21 miles through Kyle to I-35. RM 150 supports northwest and southeast movements through the county between Dripping Springs and Kyle, Buda, and the I-35 corridor.

From RM 12 to RM 2770, RM 150 is a two-lane rural section. The rural section continues from RM 2770 for approximately 1.6 miles, where RM 150 is co-designated as Rebel Drive. RM 150 takes a sharp turn towards the east where it transitions into a two-lane urban section and is co-designated as Center Street for approximately 0.6 mile to the IH 35 service road.

2.2 Project History

The significance of impacts for the proposed RM 150 project was initially uncertain, so the process began with stakeholder engagement, public involvement, and the initiation of an environmental assessment (EA). Based on preliminary analysis and feedback from the public, it was determined that an Environmental Impact Statement (EIS) should be prepared. The EIS will incorporate environmental and other information collected during the initial phase, which culminated in the 2015 *FM 150 West Alignment Study Corridor Evaluation Report*. Public input gathered during the development of the alignment study will also be considered in the EIS process. The EIS will develop and evaluate a range of alternatives including “No-action” (the no-build alternative), Transportation System Management (TSM)/Transportation Demand Management (TDM), and roadway build alternatives within Corridor C established by the 2015 Corridor Report. The EIS will analyze potential direct, indirect and cumulative impacts from construction and operation of the proposed project including, but not limited to, the following: air quality impacts; traffic noise impacts; water quality impacts including storm water runoff; impacts to waters of the United States, including wetlands; impacts to floodplains; impacts to historic and archeological resources; impacts to vegetation, wildlife habitat and threatened and endangered species; socioeconomic and community impacts including environmental justice considerations; impacts to land use; and impacts to aesthetic and visual resources.

3.0 AGENCY ROLES AND RESPONSIBILITIES

3.1 Joint Lead Agencies

TxDOT and Hays County will serve as joint lead agencies for the proposed project. The environmental review, consultation, and other actions required by applicable federal environmental laws for this project are being, or have been, carried-out by TxDOT pursuant to 23 U.S.C. 327 and a Memorandum of Understanding dated December 16, 2014, and executed by the Federal Highway Administration (FHWA) and TxDOT. TxDOT will develop the environmental documents in accordance with 23 CFR §771 and 40 CFR §1500-1508.

The joint lead agencies will:

- identify and involve cooperating and participating agencies in the environmental review process;
- develop the Coordination Plan;
- solicit input from the public and participating agencies on the project's purpose and need;
- finalize the purpose and need statement;
- provide opportunities for the public and agencies to provide input on the range of reasonable alternatives and the alternatives analysis methodology;
- ensure environmental commitments are completed; and
- manage the environmental review process and assist in addressing/resolving any potential issues.

3.2 Participating Agencies

Federal, State, tribal, regional, and local government agencies that may have an interest in the project have been invited to serve as participating agencies. **Appendix A** contains copies of the letters sent to agencies that have been invited to serve as Participating agencies.

The roles and responsibilities of participating agencies include, but are not limited to:

- participating in the scoping process;
- participating in the NEPA process with regard to development of the purpose and need statement, range of alternatives, and evaluation methodologies and criteria; and
- identifying and providing early input on issues of concern regarding the project's potential impacts to the natural and human environment.

Accepting a role as a participating agency does not imply that an agency supports the project or has jurisdiction or special expertise with respect to the evaluation of the project.

3.3 Cooperating Agencies

Cooperating agencies are federal participating agencies that have either jurisdiction by law regarding aspects of the proposed project or special expertise pertaining to the proposed project. TxDOT and Hays County, as the joint lead agencies, will invite federal agencies to be Cooperating agencies in the EIS process. Cooperating agencies would be expected to assist in the preparation, coordination, and review of the EIS. If a federal agency chooses to decline the invitation to become a cooperating agency, their response letter (electronic or hard copy) must state that the agency has no jurisdiction or authority with respect to the project, or has no expertise or information relevant to the project, and does not intend to submit comments on the project. If the federal agency's response does not state the agency's position in these terms, then the agency should be treated as a participating agency. **Appendix A** contains copies of the letters sent to agencies that have been invited to serve as Cooperating agencies.

Table 3-1 summarizes the roles and responsibilities of potential participating and cooperating agencies identified to date.

Table 3-1 Cooperating and Participating Agencies				
Agency	Roles		Response	Responsibility
	Cooperating	Participating		
Environmental Protection Agency			Cooperating agency invitation mailed on July 12, 2018.	Ensure compliance with Clean Air Act Amendments (CAAA) Ensure compliance with hazardous materials regulations
United States Fish and Wildlife Service			Cooperating agency invitation mailed on July 12, 2018.	Provide input on potential threatened and endangered species within the study area Provide input on designated critical habitat within the study area Ensure compliance with Section 7 of the Endangered Species Act Provide input on potential impacts to wildlife refuges within the project area Ensure compliance with the Migratory Bird Treaty Act Ensure compliance with the Bald and Golden Eagle Protection Act Ensure compliance with the Fish and Wildlife Coordination Act
United States Army Corps of Engineers			Cooperating agency invitation mailed on July 12, 2018.	Ensure compliance with Section 404 of the Clean Water Act Ensure compliance with Section 10 of the General Bridge Act of 1946

Table 3-1 Cooperating and Participating Agencies

Agency	Roles		Response	Responsibility
United States Department of Housing and Urban Development			Cooperating agency invitation mailed on July 12, 2018.	Ensure compliance with the Uniform Relocation Assistance and Real Property Acquisition Policies Act of 1970
United States Department of Agriculture; Natural Resources Conservation Service			Cooperating agency invitation mailed on July 12, 2018.	Ensure compliance with the Farmland Protection Policy Act
Federal Highway Administration			Cooperating agency invitation mailed on July 12, 2018.	Ensure compliance with NEPA
United States Department of Interior; National Parks Service			Cooperating agency invitation mailed on July 12, 2018.	Ensure compliance with Section 4(f) of the Department of Transportation Act of 1966
Texas Parks and Wildlife Department		X	Participating agency invitation mailed on July 12, 2018. Response received on July 24, 2018, accepting Participating agency status	Provide input on potential threatened and endangered species and habitat that could be impacted in the project area
Texas Historical Commission			Participating agency invitation mailed on July 12, 2018.	Determine Section 106 compliance and eligibility Ensure compliance with the Texas Antiquities Code Ensure compliance with Section 4(f) of the Department of Transportation Act of 1966 Ensure compliance with the TxDOT THC/SHPO programmatic agreement Coordinate cultural resource consultations
Texas Commission on Environmental Quality			Participating agency invitation mailed on July 12, 2018.	Ensure compliance with Section 401 of the Clean Water Act Ensure compliance with state surface water quality standards Evaluate Texas Pollutant Discharge Elimination System permits Assist EPA to determine conformity of air quality plans Provide input on hazardous material sites
Texas General Land Office			Participating agency invitation mailed on July 12, 2018.	Review project effects under Memorandum of Understanding and Memorandum of Agreement between TxDOT and GLO
City of Kyle			Participating agency invitation mailed on July 12, 2018.	Identification and resolution of project effects to areas within the city limits and area of extraterritorial jurisdiction

Table 3-1 Cooperating and Participating Agencies

Agency	Roles		Response	Responsibility
City of San Marcos		X	Participating agency invitation mailed on July 12, 2018. Response received on July 24, 2018, accepting Participating agency status	Identification and resolution of project effects to areas within the city limits and area of extraterritorial jurisdiction
Capital Area Metropolitan Planning Organization			Participating agency invitation mailed on July 12, 2018.	Determine regional transportation planning priorities
Alabama-Coushatta Tribe of Texas			Participating agency invitation mailed on July 12, 2018.	Identification of potential impacts to environmental justice populations and identification of potential impacts to cultural resources under Section 106 of the National Historic Preservation Act of 1966
Alabama-Quassarte Tribal Town			Participating agency invitation mailed on July 12, 2018.	Identification of potential impacts to environmental justice populations and identification of potential impacts to cultural resources under Section 106 of the National Historic Preservation Act of 1966
Apache Tribe of Oklahoma			Participating agency invitation mailed on July 12, 2018.	Identification of potential impacts to environmental justice populations and identification of potential impacts to cultural resources under Section 106 of the National Historic Preservation Act of 1966
Caddo Nation of Oklahoma			Participating agency invitation mailed on July 12, 2018.	Identification of potential impacts to environmental justice populations and identification of potential impacts to cultural resources under Section 106 of the National Historic Preservation Act of 1966
Comanche Nation of Oklahoma			Participating agency invitation mailed on July 12, 2018.	Identification of potential impacts to environmental justice populations and identification of potential impacts to cultural resources under Section 106 of the National Historic Preservation Act of 1966
Kiowa Indian Tribe of Oklahoma			Participating agency invitation mailed on July 12, 2018.	Identification of potential impacts to environmental justice populations and identification of potential impacts to cultural resources under Section 106 of the National Historic Preservation Act of 1966
Mescalero Apache Tribe			Participating agency invitation mailed on July 12, 2018.	Identification of potential impacts to environmental justice populations and identification of potential impacts to cultural resources under Section 106 of the National Historic Preservation Act of 1966
Seminole Nation of Oklahoma			Participating agency invitation mailed on July 12, 2018.	Identification of potential impacts to environmental justice populations and identification of potential impacts to cultural resources under Section 106 of the National Historic Preservation Act of 1966

Table 3-1 Cooperating and Participating Agencies

Agency	Roles		Response	Responsibility
Delaware Nation			Participating agency invitation mailed on July 12, 2018.	Identification of potential impacts to environmental justice populations and identification of potential impacts to cultural resources under Section 106 of the National Historic Preservation Act of 1966
"Wichita and Affiliated Tribes"			Participating agency invitation mailed on July 12, 2018.	Identification of potential impacts to environmental justice populations and identification of potential impacts to cultural resources under Section 106 of the National Historic Preservation Act of 1966
Tonkawa Tribe of Indians of Oklahoma			Participating agency invitation mailed on July 12, 2018.	Identification of potential impacts to environmental justice populations and identification of potential impacts to cultural resources under Section 106 of the National Historic Preservation Act of 1966

4.0 PROJECT COORDINATION

4.1 Agency Coordination

TxDOT and Hays County will facilitate the agency coordination process through the scheduling of agency scoping meetings to ensure meaningful participation during the project development process. **Table 4-1** identifies key agency coordination points throughout the project development and NEPA process. This list does not preclude additional coordination opportunities with these agencies during the EIS process.

Table 4-1 Agency Coordination

Agency Coordination Point	Timeframe
Publication of Notice of Intent (NOI) in the Federal and Texas Registers	July 18, 2018
Agency Scoping Meetings: Including Cooperating and Participating Agencies to provide an opportunity for input into the project purpose and need, alternatives analysis methodology, preliminary alternatives, potential environmental concerns, and project schedule	Late Summer/Fall 2018
Notice of Availability and DEIS Circulation	Spring 2019
FEIS/ROD Circulation	Summer 2020

4.2 Public Involvement and Stakeholder Outreach

Given the local and regional importance of the RM 150 project, the public involvement activities planned will include a comprehensive outreach program designed to proactively engage and encourage participation of all interested stakeholders. A copy of the Public Involvement Plan is included in **Appendix B**. The Public Involvement Plan will be periodically updated as a result of ongoing public involvement and input. Additionally, issues specific to this project may require adjustments to the Plan to address communication obstacles encountered during public outreach efforts. **Table 4-2** identifies

key public involvement and stakeholder outreach efforts that will be undertaken throughout the project development and NEPA process.

Table 4-2 Public Involvement/Stakeholder Outreach	
Public Involvement/Stakeholder Outreach Point	Timeframe
Public Scoping Meetings: to provide an opportunity for input into the project purpose and need, alternatives analysis methodology, preliminary alternatives, potential environmental concerns, and project schedule	Late Summer/Fall 2018
Stakeholder Meetings	2018-2020
Public Meetings	To be determined
Public Hearing	Summer 2019
Project Webpage	Throughout project

Objectives of the RM 150 public involvement process include:

- Fulfill NEPA and TxDOT requirements for public involvement;
- Ensure project involvement and public outreach with low income, limited English proficiency, and special needs populations within the study area;
- Use visually informative slides, exhibits, handouts, and presentations to help communicate technical concepts and retain public interest;
- Demonstrate to the public that their input is being incorporated into the project development process.

5.0 PROJECT MILESTONES/SCHEDULE

Major milestones and general timeframes are identified in **Table 5-1**. It is the intent of the Joint Lead Agencies to develop a more detailed schedule reflective of these milestones.

Table 5-1 Major Project Milestones	
Milestone	Timeframe
Draft Purpose and Need and Draft Coordination Plan	Summer 2018
Publication of Notice of Intent (NOI) in the Federal and Texas Registers	July 18, 2018
Develop preliminary alternatives for DEIS	Summer 2018
1 st Public and Agency Scoping Meeting	Late Summer 2018
2 nd Public and Agency Scoping Meeting	Fall 2018
Screening of preliminary alternatives and design of reasonable alternatives	Summer/Fall 2018
Public Meetings	To be determined
Preparation of DEIS and identification of recommended preferred alternative and potential environmental impacts	Winter 2018-Spring 2019
Notice of Availability and DEIS Circulation	Spring 2019

Table 5-1 Major Project Milestones	
Milestone	Timeframe
Public Hearing and presentation of recommended preferred alternative	Summer 2019
Response to Public and Agency comments on the DEIS	Summer 2019
Preparation of FEIS/ROD and other federal approvals	Fall 2019-Spring 2020
Issue combined FEIS/ROD	Summer 2020

As Joint Lead Agencies, TxDOT and Hays County will develop a detailed project schedule for completion of the RM 150 EIS. The schedule will be developed taking the following factors into consideration:

- the responsibilities of Participating agencies under applicable laws;
- the resources available to the Cooperating agencies;
- the overall size and complexity of the project;
- the overall schedule for and cost of the project; and
- the sensitivity of the natural, cultural and community resources that could be affected by the project.

Potential issues that may affect the schedule include the size and complexity of the project, community concerns, impacts to cultural resources (such as archeological sites and historic properties); and impacts to natural resources, (such as wetlands and potential threatened and endangered species habitat). The schedule may be extended pending unforeseen circumstances, but may only be shortened with the concurrence of affected Cooperating agencies. The updated schedule reflecting major project milestones will be available at public and agency coordination meetings and on the project website.

6.0 REVISION HISTORY

Table 6-1 Revision History	
Effective Date	Reason for and Description of Change

APPENDIX A

Cooperating and Participating Agency and Invitation Letters



125 EAST 11TH STREET, AUSTIN, TEXAS 78701-2483 | 512.463.8588 | WWW.TXDOT.GOV

July 12, 2018

Eric Verwers
Deputy District Engineer, Fort Worth District
U.S. Army Corps of Engineers
819 Taylor Street
Fort Worth, Texas 76102

Re: Invitation to Become Cooperating Agency on the RM 150 West Alignment
Environmental Impact Study
CSJs: 0805-04-028 and 0016-17-013

Dear Mr. Verwers:

Hays County and the Texas Department of Transportation (TxDOT) are proposing the construction of RM 150, a new location roadway facility. The proposed project limits are from RM 150 west of Kyle to I-35. The proposed project length is approximately 6 miles. A Notice of Intent to prepare an Environmental Impact Statement (EIS) was published recently in the Federal Register. The proposed project is included in the Capital Area Metropolitan Planning Organization (CAMPO) 2040 Regional Transportation Plan (adopted May 2015 and amended September 2015), and the Hays County Transportation Plan (adopted January 2013 and amended June 2013).

The environmental review, consultation, and other actions required by applicable Federal environmental laws for this project are being, or have been, carried out by TxDOT pursuant to 23 USC 327 and a Memorandum of Understanding (MOU) dated December 16, 2014, and executed by FHWA and TxDOT. Therefore, TxDOT is preparing this EIS in its role as the lead federal agency under the MOU between TxDOT and FHWA. This MOU assigns to TxDOT FHWA's responsibilities under NEPA and other environmental laws.

Your agency has been identified as having specialized expertise and/or jurisdiction by law with regard to potential environmental effects related to the proposed project. We extend your agency an invitation to become a Cooperating Agency with TxDOT in the development of the RM 150 West Alignment EIS. Responsibilities of a Cooperating Agency include participating in the scoping process, developing information for the EIS if applicable, and providing staff support for the timely review and preparation of the EIS. This request is made in accordance with 40 CFR 1501.6 of the Council on Environmental Quality's Regulations for Implementing the Procedural Provision of the National Environmental Policy Act (NEPA).

OUR VALUES: People • Accountability • Trust • Honesty

OUR MISSION: Through collaboration and leadership, we deliver a safe, reliable, and integrated transportation system that enables the movement of people and goods.

An Equal Opportunity Employer

Please respond to TxDOT in writing with an acceptance or denial of the invitation prior to August 2, 2018. If your agency chooses to decline, please specifically state in your response that your agency:

- Has no jurisdiction or authority with respect to the project;
- Has no expertise or information relevant to the project; and,
- Does not intend to submit comments on the project.

Additionally, TxDOT invites you to attend an Agency Scoping meeting for the RM 150 West Alignment EIS. The scoping meeting will be held:

Thursday, August 2, 2018
10:00 a.m. to 12:00 p.m.
TxDOT Austin District
7901 N. Interstate Hwy 35
Austin, Texas 78753

The purpose of this scoping meeting is to present and obtain feedback on the Draft Purpose and Need, Draft Coordination Plan, draft alternatives analysis methodology, potential environmental concerns and project schedule.

If you have any questions or would like to discuss in more detail the project or our agencies' respective roles and responsibilities during the preparation of the RM 150 West Alignment EIS, please contact Jon Geiselbrecht at 512-832-7218, or jon.geiselbrecht@txdot.gov.

Sincerely,



Carlos Swonke

Director of Environmental Affairs Division



125 EAST 11TH STREET, AUSTIN, TEXAS 78701-2483 | 512.463.8588 | WWW.TXDOT.GOV

July 12, 2018

Adam Zerrenner
Field Supervisor, Austin Ecological Services Field Office
U.S. Fish and Wildlife Service
10711 Burnet Road, Suite 200
Austin, Texas 78758

Re: Invitation to Become Cooperating Agency on the RM 150 West Alignment
Environmental Impact Study
CSJs: 0805-04-028 and 0016-17-013

Dear Mr. Zerrenner:

Hays County and the Texas Department of Transportation (TxDOT) are proposing the construction of RM 150, a new location roadway facility. The proposed project limits are from RM 150 west of Kyle to I-35. The proposed project length is approximately 6 miles. A Notice of Intent to prepare an Environmental Impact Statement (EIS) was published recently in the Federal Register. The proposed project is included in the Capital Area Metropolitan Planning Organization (CAMPO) 2040 Regional Transportation Plan (adopted May 2015 and amended September 2015), and the Hays County Transportation Plan (adopted January 2013 and amended June 2013).

The environmental review, consultation, and other actions required by applicable Federal environmental laws for this project are being, or have been, carried out by TxDOT pursuant to 23 USC 327 and a Memorandum of Understanding (MOU) dated December 16, 2014, and executed by FHWA and TxDOT. Therefore, TxDOT is preparing this EIS in its role as the lead federal agency under the MOU between TxDOT and FHWA. This MOU assigns to TxDOT FHWA's responsibilities under NEPA and other environmental laws.

Your agency has been identified as having specialized expertise and/or jurisdiction by law with regard to potential environmental effects related to the proposed project. We extend your agency an invitation to become a Cooperating Agency with TxDOT in the development of the RM 150 West Alignment EIS. Responsibilities of a Cooperating Agency include participating in the scoping process, developing information for the EIS if applicable, and providing staff support for the timely review and preparation of the EIS. This request is made in accordance with 40 CFR 1501.6 of the Council on Environmental Quality's Regulations for Implementing the Procedural Provision of the National Environmental Policy Act (NEPA).

OUR VALUES: People • Accountability • Trust • Honesty

OUR MISSION: Through collaboration and leadership, we deliver a safe, reliable, and integrated transportation system that enables the movement of people and goods.

An Equal Opportunity Employer

Please respond to TxDOT in writing with an acceptance or denial of the invitation prior to August 2, 2018. If your agency chooses to decline, please specifically state in your response that your agency:

- Has no jurisdiction or authority with respect to the project;
- Has no expertise or information relevant to the project; and,
- Does not intend to submit comments on the project.


Additionally, TxDOT invites you to attend an Agency Scoping meeting for the RM 150 West Alignment EIS. The scoping meeting will be held:

Thursday, August 2, 2018
10:00 a.m. to 12:00 p.m.
TxDOT Austin District
7901 N. Interstate Hwy 35
Austin, Texas 78753

The purpose of this scoping meeting is to present and obtain feedback on the Draft Purpose and Need, Draft Coordination Plan, draft alternatives analysis methodology, potential environmental concerns and project schedule.

If you have any questions or would like to discuss in more detail the project or our agencies' respective roles and responsibilities during the preparation of the RM 150 West Alignment EIS, please contact Jon Geiselbrecht at 512-832-7218, or jon.geiselbrecht@txdot.gov.

Sincerely,



Carlos Swonke
Director of Environmental Affairs Division



125 EAST 11TH STREET, AUSTIN, TEXAS 78701-2483 | 512.463.8588 | WWW.TXDOT.GOV

July 12, 2018

Charlotte Kucera
Transportation Liaison, Austin Ecological Services Field Office
U.S. Fish and Wildlife Service
10712 Burnet Road, Suite 200
Austin, Texas 78758

Re: Invitation to Become Cooperating Agency on the RM 150 West Alignment
Environmental Impact Study
CSJs: 0805-04-028 and 0016-17-013

Dear Ms. Kucera:

Hays County and the Texas Department of Transportation (TxDOT) are proposing the construction of RM 150, a new location roadway facility. The proposed project limits are from RM 150 west of Kyle to I-35. The proposed project length is approximately 6 miles. A Notice of Intent to prepare an Environmental Impact Statement (EIS) was published recently in the Federal Register. The proposed project is included in the Capital Area Metropolitan Planning Organization (CAMPO) 2040 Regional Transportation Plan (adopted May 2015 and amended September 2015), and the Hays County Transportation Plan (adopted January 2013 and amended June 2013).

The environmental review, consultation, and other actions required by applicable Federal environmental laws for this project are being, or have been, carried out by TxDOT pursuant to 23 USC 327 and a Memorandum of Understanding (MOU) dated December 16, 2014, and executed by FHWA and TxDOT. Therefore, TxDOT is preparing this EIS in its role as the lead federal agency under the MOU between TxDOT and FHWA. This MOU assigns to TxDOT FHWA's responsibilities under NEPA and other environmental laws.

Your agency has been identified as having specialized expertise and/or jurisdiction by law with regard to potential environmental effects related to the proposed project. We extend your agency an invitation to become a Cooperating Agency with TxDOT in the development of the RM 150 West Alignment EIS. Responsibilities of a Cooperating Agency include participating in the scoping process, developing information for the EIS if applicable, and providing staff support for the timely review and preparation of the EIS. This request is made in accordance with 40 CFR 1501.6 of the Council on Environmental Quality's Regulations for Implementing the Procedural Provision of the National Environmental Policy Act (NEPA).

OUR VALUES: People • Accountability • Trust • Honesty

OUR MISSION: Through collaboration and leadership, we deliver a safe, reliable, and integrated transportation system that enables the movement of people and goods.

An Equal Opportunity Employer

Please respond to TxDOT in writing with an acceptance or denial of the invitation prior to August 2, 2018. If your agency chooses to decline, please specifically state in your response that your agency:

- Has no jurisdiction or authority with respect to the project;
- Has no expertise or information relevant to the project; and,
- Does not intend to submit comments on the project.

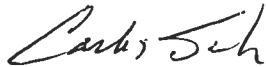
Additionally, TxDOT invites you to attend an Agency Scoping meeting for the RM 150 West Alignment EIS. The scoping meeting will be held:

Thursday, August 2, 2018
10:00 a.m. to 12:00 p.m.
TxDOT Austin District
7901 N. Interstate Hwy 35
Austin, Texas 78753

The purpose of this scoping meeting is to present and obtain feedback on the Draft Purpose and Need, Draft Coordination Plan, draft alternatives analysis methodology, potential environmental concerns and project schedule.

If you have any questions or would like to discuss in more detail the project or our agencies' respective roles and responsibilities during the preparation of the RM 150 West Alignment EIS, please contact Jon Geiselbrecht at 512-832-7218, or jon.geiselbrecht@txdot.gov.

Sincerely,



Carlos Swonke

Director of Environmental Affairs Division



125 EAST 11TH STREET, AUSTIN, TEXAS 78701-2483 | 512.463.8588 | WWW.TXDOT.GOV

July 12, 2018

Amy Lueders
Regional Director, Southwest Region
U.S. Fish and Wildlife Service
P.O. Box 1306
Albuquerque, New Mexico 87103

Re: Invitation to Become Cooperating Agency on the RM 150 West Alignment
Environmental Impact Study
CSJs: 0805-04-028 and 0016-17-013

Dear Ms. Lueders:

Hays County and the Texas Department of Transportation (TxDOT) are proposing the construction of RM 150, a new location roadway facility. The proposed project limits are from RM 150 west of Kyle to I-35. The proposed project length is approximately 6 miles. A Notice of Intent to prepare an Environmental Impact Statement (EIS) was published recently in the Federal Register. The proposed project is included in the Capital Area Metropolitan Planning Organization (CAMPO) 2040 Regional Transportation Plan (adopted May 2015 and amended September 2015), and the Hays County Transportation Plan (adopted January 2013 and amended June 2013).

The environmental review, consultation, and other actions required by applicable Federal environmental laws for this project are being, or have been, carried out by TxDOT pursuant to 23 USC 327 and a Memorandum of Understanding (MOU) dated December 16, 2014, and executed by FHWA and TxDOT. Therefore, TxDOT is preparing this EIS in its role as the lead federal agency under the MOU between TxDOT and FHWA. This MOU assigns to TxDOT FHWA's responsibilities under NEPA and other environmental laws.

Your agency has been identified as having specialized expertise and/or jurisdiction by law with regard to potential environmental effects related to the proposed project. We extend your agency an invitation to become a Cooperating Agency with TxDOT in the development of the RM 150 West Alignment EIS. Responsibilities of a Cooperating Agency include participating in the scoping process, developing information for the EIS if applicable, and providing staff support for the timely review and preparation of the EIS. This request is made in accordance with 40 CFR 1501.6 of the Council on Environmental Quality's Regulations for Implementing the Procedural Provision of the National Environmental Policy Act (NEPA).

OUR VALUES: People • Accountability • Trust • Honesty

OUR MISSION: Through collaboration and leadership, we deliver a safe, reliable, and integrated transportation system that enables the movement of people and goods.

An Equal Opportunity Employer

Please respond to TxDOT in writing with an acceptance or denial of the invitation prior to August 2, 2018. If your agency chooses to decline, please specifically state in your response that your agency:

- Has no jurisdiction or authority with respect to the project;
- Has no expertise or information relevant to the project; and,
- Does not intend to submit comments on the project.

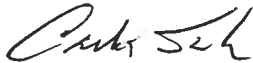
Additionally, TxDOT invites you to attend an Agency Scoping meeting for the RM 150 West Alignment EIS. The scoping meeting will be held:

Thursday, August 2, 2018
10:00 a.m. to 12:00 p.m.
TxDOT Austin District
7901 N. Interstate Hwy 35
Austin, Texas 78753

The purpose of this scoping meeting is to present and obtain feedback on the Draft Purpose and Need, Draft Coordination Plan, draft alternatives analysis methodology, potential environmental concerns and project schedule.

If you have any questions or would like to discuss in more detail the project or our agencies' respective roles and responsibilities during the preparation of the RM 150 West Alignment EIS, please contact Jon Geiselbrecht at 512-832-7218, or jon.geiselbrecht@txdot.gov.

Sincerely,



Carlos Swonke
Director of Environmental Affairs Division



125 EAST 11TH STREET, AUSTIN, TEXAS 78701-2483 | 512.463.8588 | WWW.TXDOT.GOV

July 12, 2018

Anne Idsal
Regional Administrator, Region 6
U.S. Environmental Protection Agency
1445 Ross Avenue, Suite 1200
Dallas, Texas 75202

Re: Invitation to Become Cooperating Agency on the RM 150 West Alignment
Environmental Impact Study
CSJs: 0805-04-028 and 0016-17-013

Dear Ms. Idsal:

Hays County and the Texas Department of Transportation (TxDOT) are proposing the construction of RM 150, a new location roadway facility. The proposed project limits are from RM 150 west of Kyle to I-35. The proposed project length is approximately 6 miles. A Notice of Intent to prepare an Environmental Impact Statement (EIS) was published recently in the Federal Register. The proposed project is included in the Capital Area Metropolitan Planning Organization (CAMPO) 2040 Regional Transportation Plan (adopted May 2015 and amended September 2015), and the Hays County Transportation Plan (adopted January 2013 and amended June 2013).

The environmental review, consultation, and other actions required by applicable Federal environmental laws for this project are being, or have been, carried out by TxDOT pursuant to 23 USC 327 and a Memorandum of Understanding (MOU) dated December 16, 2014, and executed by FHWA and TxDOT. Therefore, TxDOT is preparing this EIS in its role as the lead federal agency under the MOU between TxDOT and FHWA. This MOU assigns to TxDOT FHWA's responsibilities under NEPA and other environmental laws.

Your agency has been identified as having specialized expertise and/or jurisdiction by law with regard to potential environmental effects related to the proposed project. We extend your agency an invitation to become a Cooperating Agency with TxDOT in the development of the RM 150 West Alignment EIS. Responsibilities of a Cooperating Agency include participating in the scoping process, developing information for the EIS if applicable, and providing staff support for the timely review and preparation of the EIS. This request is made in accordance with 40 CFR 1501.6 of the Council on Environmental Quality's Regulations for Implementing the Procedural Provision of the National Environmental Policy Act (NEPA).

OUR VALUES: People • Accountability • Trust • Honesty

OUR MISSION: Through collaboration and leadership, we deliver a safe, reliable, and integrated transportation system that enables the movement of people and goods.

An Equal Opportunity Employer

Please respond to TxDOT in writing with an acceptance or denial of the invitation prior to August 2, 2018. If your agency chooses to decline, please specifically state in your response that your agency:

- Has no jurisdiction or authority with respect to the project;
- Has no expertise or information relevant to the project; and,
- Does not intend to submit comments on the project.

Additionally, TxDOT invites you to attend an Agency Scoping meeting for the RM 150 West Alignment EIS. The scoping meeting will be held:

Thursday, August 2, 2018
10:00 a.m. to 12:00 p.m.
TxDOT Austin District
7901 N. Interstate Hwy 35
Austin, Texas 78753

The purpose of this scoping meeting is to present and obtain feedback on the Draft Purpose and Need, Draft Coordination Plan, draft alternatives analysis methodology, potential environmental concerns and project schedule.

If you have any questions or would like to discuss in more detail the project or our agencies' respective roles and responsibilities during the preparation of the RM 150 West Alignment EIS, please contact Jon Geiselbrecht at 512-832-7218, or jon.geiselbrecht@txdot.gov.

Sincerely,



Carlos Swonke
Director of Environmental Affairs Division



125 EAST 11TH STREET, AUSTIN, TEXAS 78701-2483 | 512.463.8588 | WWW.TXDOT.GOV

July 12, 2018

Salvador Salinas
State Conservationist
U.S. Department of Agriculture, Natural Resources Conservation Service
101 South Main
Temple, Texas 76501

Re: Invitation to Become Cooperating Agency on the RM 150 West Alignment
Environmental Impact Study
CSJs: 0805-04-028 and 0016-17-013

Dear Mr. Salinas:

Hays County and the Texas Department of Transportation (TxDOT) are proposing the construction of RM 150, a new location roadway facility. The proposed project limits are from RM 150 west of Kyle to I-35. The proposed project length is approximately 6 miles. A Notice of Intent to prepare an Environmental Impact Statement (EIS) was published recently in the Federal Register. The proposed project is included in the Capital Area Metropolitan Planning Organization (CAMPO) 2040 Regional Transportation Plan (adopted May 2015 and amended September 2015), and the Hays County Transportation Plan (adopted January 2013 and amended June 2013).

The environmental review, consultation, and other actions required by applicable Federal environmental laws for this project are being, or have been, carried out by TxDOT pursuant to 23 USC 327 and a Memorandum of Understanding (MOU) dated December 16, 2014, and executed by FHWA and TxDOT. Therefore, TxDOT is preparing this EIS in its role as the lead federal agency under the MOU between TxDOT and FHWA. This MOU assigns to TxDOT FHWA's responsibilities under NEPA and other environmental laws.

Your agency has been identified as having specialized expertise and/or jurisdiction by law with regard to potential environmental effects related to the proposed project. We extend your agency an invitation to become a Cooperating Agency with TxDOT in the development of the RM 150 West Alignment EIS. Responsibilities of a Cooperating Agency include participating in the scoping process, developing information for the EIS if applicable, and providing staff support for the timely review and preparation of the EIS. This request is made in accordance with 40 CFR 1501.6 of the Council on Environmental Quality's Regulations for Implementing the Procedural Provision of the National Environmental Policy Act (NEPA).

OUR VALUES: People • Accountability • Trust • Honesty

OUR MISSION: Through collaboration and leadership, we deliver a safe, reliable, and integrated transportation system that enables the movement of people and goods.

An Equal Opportunity Employer

Please respond to TxDOT in writing with an acceptance or denial of the invitation prior to August 2, 2018. If your agency chooses to decline, please specifically state in your response that your agency:

- Has no jurisdiction or authority with respect to the project;
- Has no expertise or information relevant to the project; and,
- Does not intend to submit comments on the project.

Additionally, TxDOT invites you to attend an Agency Scoping meeting for the RM 150 West Alignment EIS. The scoping meeting will be held:

Thursday, August 2, 2018
10:00 a.m. to 12:00 p.m.
TxDOT Austin District
7901 N. Interstate Hwy 35
Austin, Texas 78753

The purpose of this scoping meeting is to present and obtain feedback on the Draft Purpose and Need, Draft Coordination Plan, draft alternatives analysis methodology, potential environmental concerns and project schedule.

If you have any questions or would like to discuss in more detail the project or our agencies' respective roles and responsibilities during the preparation of the RM 150 West Alignment EIS, please contact Jon Geiselbrecht at 512-832-7218, or jon.geiselbrecht@txdot.gov.

Sincerely,



Carlos Swonke
Director of Environmental Affairs Division



125 EAST 11TH STREET, AUSTIN, TEXAS 78701-2483 | 512.463.8588 | WWW.TXDOT.GOV

July 12, 2018

Beth Van Duyne
Regional Administrator, Region VI
U.S. Department of Housing and Urban Development
801 Cherry Street, Unit #45, Suite 2500
Fort Worth, Texas 76102

Re: Invitation to Become Participating Agency on the RM 150 West Alignment
Environmental Impact Study
CSJs: 0805-04-028 and 0016-17-013

Dear Ms. Van Duyne:

Hays County and the Texas Department of Transportation (TxDOT) are proposing the construction of RM 150, a new location roadway facility. The proposed project limits are from RM 150 west of Kyle to I-35. The proposed project length is approximately 6 miles. A Notice of Intent to prepare an Environmental Impact Statement (EIS) was published recently in the Federal Register. The proposed project is included in the Capital Area Metropolitan Planning Organization (CAMPO) 2040 Regional Transportation Plan (adopted May 2015 and amended September 2015), and the Hays County Transportation Plan (adopted January 2013 and amended June 2013).

The environmental review, consultation, and other actions required by applicable Federal environmental laws for this project are being, or have been, carried out by TxDOT pursuant to 23 USC 327 and a Memorandum of Understanding (MOU) dated December 16, 2014, and executed by FHWA and TxDOT. Therefore, TxDOT is preparing this EIS in its role as the lead federal agency under the MOU between TxDOT and FHWA. This MOU assigns to TxDOT FHWA's responsibilities under NEPA and other environmental laws.

Your agency has been identified as having specialized expertise and/or jurisdiction by law with regard to potential environmental effects related to the proposed project. We extend your agency an invitation to become a Participating agency with TxDOT in the development of the RM 150 West Alignment EIS. Participating agencies are responsible to identify, as early as practicable, any issues of concern regarding the project's potential environmental or socioeconomic impacts that could substantially delay or prevent an agency from granting a permit or other approval that is needed for the project. This request is made in accordance with 40 CFR 1501.6 of the Council on Environmental Quality's Regulations for Implementing the Procedural Provision of the National Environmental Policy Act (NEPA).

OUR VALUES: People • Accountability • Trust • Honesty

OUR MISSION: Through collaboration and leadership, we deliver a safe, reliable, and integrated transportation system that enables the movement of people and goods.

An Equal Opportunity Employer

Please respond to TxDOT in writing with an acceptance or denial of the invitation prior to August 2, 2018. If your agency chooses to decline, please specifically state in your response that your agency:

- Has no jurisdiction or authority with respect to the project;
- Has no expertise or information relevant to the project; and,
- Does not intend to submit comments on the project.

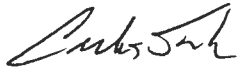
Additionally, TxDOT invites you to attend an Agency Scoping meeting for the RM 150 West Alignment EIS. The scoping meeting will be held:

Thursday, August 2, 2018
10:00 a.m. to 12:00 p.m.
TxDOT Austin District
7901 N. Interstate Hwy 35
Austin, Texas 78753

The purpose of this scoping meeting is to present and obtain feedback on the Draft Purpose and Need, Draft Coordination Plan, draft alternatives analysis methodology, potential environmental concerns and project schedule.

If you have any questions or would like to discuss in more detail the project or our agencies' respective roles and responsibilities during the preparation of the RM 150 West Alignment EIS, please contact Jon Geiselbrecht at 512-832-7218, or jon.geiselbrecht@txdot.gov.

Sincerely,



Carlos Swonke

Director of Environmental Affairs Division



125 EAST 11TH STREET, AUSTIN, TEXAS 78701-2483 | 512.463.8588 | WWW.TXDOT.GOV

July 12, 2018

Sue Mascia
Regional Director, Intermountain Region
National Parks Service
12795 Alameda Parkway
Lakewood, Colorado 80228

Re: Invitation to Become Participating Agency on the RM 150 West Alignment
Environmental Impact Study
CSJs: 0805-04-028 and 0016-17-013

Dear Ms. Mascia:

Hays County and the Texas Department of Transportation (TxDOT) are proposing the construction of RM 150, a new location roadway facility. The proposed project limits are from RM 150 west of Kyle to I-35. The proposed project length is approximately 6 miles. A Notice of Intent to prepare an Environmental Impact Statement (EIS) was published recently in the Federal Register. The proposed project is included in the Capital Area Metropolitan Planning Organization (CAMPO) 2040 Regional Transportation Plan (adopted May 2015 and amended September 2015), and the Hays County Transportation Plan (adopted January 2013 and amended June 2013).

The environmental review, consultation, and other actions required by applicable Federal environmental laws for this project are being, or have been, carried out by TxDOT pursuant to 23 USC 327 and a Memorandum of Understanding (MOU) dated December 16, 2014, and executed by FHWA and TxDOT. Therefore, TxDOT is preparing this EIS in its role as the lead federal agency under the MOU between TxDOT and FHWA. This MOU assigns to TxDOT FHWA's responsibilities under NEPA and other environmental laws.

Your agency has been identified as having specialized expertise and/or jurisdiction by law with regard to potential environmental effects related to the proposed project. We extend your agency an invitation to become a Participating agency with TxDOT in the development of the RM 150 West Alignment EIS. Participating agencies are responsible to identify, as early as practicable, any issues of concern regarding the project's potential environmental or socioeconomic impacts that could substantially delay or prevent an agency from granting a permit or other approval that is needed for the project. This request is made in accordance with 40 CFR 1501.6 of the Council on Environmental Quality's Regulations for Implementing the Procedural Provision of the National Environmental Policy Act (NEPA).

OUR VALUES: People • Accountability • Trust • Honesty

OUR MISSION: Through collaboration and leadership, we deliver a safe, reliable, and integrated transportation system that enables the movement of people and goods.

An Equal Opportunity Employer

Please respond to TxDOT in writing with an acceptance or denial of the invitation prior to August 2, 2018. If your agency chooses to decline, please specifically state in your response that your agency:

- Has no jurisdiction or authority with respect to the project;
- Has no expertise or information relevant to the project; and,
- Does not intend to submit comments on the project.

Additionally, TxDOT invites you to attend an Agency Scoping meeting for the RM 150 West Alignment EIS. The scoping meeting will be held:

Thursday, August 2, 2018
10:00 a.m. to 12:00 p.m.
TxDOT Austin District
7901 N. Interstate Hwy 35
Austin, Texas 78753

The purpose of this scoping meeting is to present and obtain feedback on the Draft Purpose and Need, Draft Coordination Plan, draft alternatives analysis methodology, potential environmental concerns and project schedule.

If you have any questions or would like to discuss in more detail the project or our agencies' respective roles and responsibilities during the preparation of the RM 150 West Alignment EIS, please contact Jon Geiselbrecht at 512-832-7218, or jon.geiselbrecht@txdot.gov.

Sincerely,



Carlos Swonke

Director of Environmental Affairs Division



125 EAST 11TH STREET, AUSTIN, TEXAS 78701-2483 | 512.463.8588 | WWW.TXDOT.GOV

July 12, 2018

George P. Bush
Commissioner
Texas General Land Office
1700 Congress Ave.
Austin, Texas 78701

Re: Invitation to Become Participating Agency on the RM 150 West Alignment
Environmental Impact Study
CSJs: 0805-04-028 and 0016-17-013

Dear Commissioner Bush:

Hays County and the Texas Department of Transportation (TxDOT) are proposing the construction of RM 150, a new location roadway facility. The proposed project limits are from RM 150 west of Kyle to I-35. The proposed project length is approximately 6 miles. A Notice of Intent to prepare an Environmental Impact Statement (EIS) was published recently in the Federal Register. The proposed project is included in the Capital Area Metropolitan Planning Organization (CAMPO) 2040 Regional Transportation Plan (adopted May 2015 and amended September 2015), and the Hays County Transportation Plan (adopted January 2013 and amended June 2013).

The environmental review, consultation, and other actions required by applicable Federal environmental laws for this project are being, or have been, carried out by TxDOT pursuant to 23 USC 327 and a Memorandum of Understanding (MOU) dated December 16, 2014, and executed by FHWA and TxDOT. Therefore, TxDOT is preparing this EIS in its role as the lead federal agency under the MOU between TxDOT and FHWA. This MOU assigns to TxDOT FHWA's responsibilities under NEPA and other environmental laws.

Your agency has been identified as having specialized expertise and/or jurisdiction by law with regard to potential environmental effects related to the proposed project. We extend your agency an invitation to become a Participating agency with TxDOT in the development of the RM 150 West Alignment EIS. Participating agencies are responsible to identify, as early as practicable, any issues of concern regarding the project's potential environmental or socioeconomic impacts that could substantially delay or prevent an agency from granting a permit or other approval that is needed for the project. This request is made in accordance with 40 CFR 1501.6 of the Council on Environmental Quality's Regulations for Implementing the Procedural Provision of the National Environmental Policy Act (NEPA).

OUR VALUES: People • Accountability • Trust • Honesty

OUR MISSION: Through collaboration and leadership, we deliver a safe, reliable, and integrated transportation system that enables the movement of people and goods.

An Equal Opportunity Employer

Please respond to TxDOT in writing with an acceptance or denial of the invitation prior to August 2, 2018. If your agency chooses to decline, please specifically state in your response that your agency:

- Has no jurisdiction or authority with respect to the project;
- Has no expertise or information relevant to the project; and,
- Does not intend to submit comments on the project.

Additionally, TxDOT invites you to attend an Agency Scoping meeting for the RM 150 West Alignment EIS. The scoping meeting will be held:

Thursday, August 2, 2018
10:00 a.m. to 12:00 p.m.
TxDOT Austin District
7901 N. Interstate Hwy 35
Austin, Texas 78753

The purpose of this scoping meeting is to present and obtain feedback on the Draft Purpose and Need, Draft Coordination Plan, draft alternatives analysis methodology, potential environmental concerns and project schedule.

If you have any questions or would like to discuss in more detail the project or our agencies' respective roles and responsibilities during the preparation of the RM 150 West Alignment EIS, please contact Jon Geiselbrecht at 512-832-7218, or jon.geiselbrecht@txdot.gov.

Sincerely,



Carlos Swonke

Director of Environmental Affairs Division



125 EAST 11TH STREET, AUSTIN, TEXAS 78701-2483 | 512.463.8588 | WWW.TXDOT.GOV

July 12, 2018

Stephanie Bergeron Perdue
Interim Executive Director
Texas Commission on Environmental Quality
P.O. Box 13087
Austin, Texas 78711

Re: Invitation to Become Participating Agency on the RM 150 West Alignment
Environmental Impact Study
CSJs: 0805-04-028 and 0016-17-013

Dear Ms. Bergeron Perdue:

Hays County and the Texas Department of Transportation (TxDOT) are proposing the construction of RM 150, a new location roadway facility. The proposed project limits are from RM 150 west of Kyle to I-35. The proposed project length is approximately 6 miles. A Notice of Intent to prepare an Environmental Impact Statement (EIS) was published recently in the Federal Register. The proposed project is included in the Capital Area Metropolitan Planning Organization (CAMPO) 2040 Regional Transportation Plan (adopted May 2015 and amended September 2015), and the Hays County Transportation Plan (adopted January 2013 and amended June 2013).

The environmental review, consultation, and other actions required by applicable Federal environmental laws for this project are being, or have been, carried out by TxDOT pursuant to 23 USC 327 and a Memorandum of Understanding (MOU) dated December 16, 2014, and executed by FHWA and TxDOT. Therefore, TxDOT is preparing this EIS in its role as the lead federal agency under the MOU between TxDOT and FHWA. This MOU assigns to TxDOT FHWA's responsibilities under NEPA and other environmental laws.

Your agency has been identified as having specialized expertise and/or jurisdiction by law with regard to potential environmental effects related to the proposed project. We extend your agency an invitation to become a Participating agency with TxDOT in the development of the RM 150 West Alignment EIS. Participating agencies are responsible to identify, as early as practicable, any issues of concern regarding the project's potential environmental or socioeconomic impacts that could substantially delay or prevent an agency from granting a permit or other approval that is needed for the project. This request is made in accordance with 40 CFR 1501.6 of the Council on Environmental Quality's Regulations for Implementing the Procedural Provision of the National Environmental Policy Act (NEPA).

OUR VALUES: People • Accountability • Trust • Honesty

OUR MISSION: *Through collaboration and leadership, we deliver a safe, reliable, and integrated transportation system that enables the movement of people and goods.*

An Equal Opportunity Employer

Please respond to TxDOT in writing with an acceptance or denial of the invitation prior to August 2, 2018. If your agency chooses to decline, please specifically state in your response that your agency:

- Has no jurisdiction or authority with respect to the project;
- Has no expertise or information relevant to the project; and,
- Does not intend to submit comments on the project.

Additionally, TxDOT invites you to attend an Agency Scoping meeting for the RM 150 West Alignment EIS. The scoping meeting will be held:

Thursday, August 2, 2018
10:00 a.m. to 12:00 p.m.
TxDOT Austin District
7901 N. Interstate Hwy 35
Austin, Texas 78753

The purpose of this scoping meeting is to present and obtain feedback on the Draft Purpose and Need, Draft Coordination Plan, draft alternatives analysis methodology, potential environmental concerns and project schedule.

If you have any questions or would like to discuss in more detail the project or our agencies' respective roles and responsibilities during the preparation of the RM 150 West Alignment EIS, please contact Jon Geiselbrecht at 512-832-7218, or jon.geiselbrecht@txdot.gov.

Sincerely,



Carlos Swonke

Director of Environmental Affairs Division



125 EAST 11TH STREET, AUSTIN, TEXAS 78701-2483 | 512.463.8588 | WWW.TXDOT.GOV

July 12, 2018

Mark Wolf
Executive Director
Texas Historical Commission/State Historic Preservation Officer
P.O. Box 12276
Austin, Texas 78711

Re: Invitation to Become Participating Agency on the RM 150 West Alignment
Environmental Impact Study
CSJs: 0805-04-028 and 0016-17-013

Dear Mr. Wolf:

Hays County and the Texas Department of Transportation (TxDOT) are proposing the construction of RM 150, a new location roadway facility. The proposed project limits are from RM 150 west of Kyle to I-35. The proposed project length is approximately 6 miles. A Notice of Intent to prepare an Environmental Impact Statement (EIS) was published recently in the Federal Register. The proposed project is included in the Capital Area Metropolitan Planning Organization (CAMPO) 2040 Regional Transportation Plan (adopted May 2015 and amended September 2015), and the Hays County Transportation Plan (adopted January 2013 and amended June 2013).

The environmental review, consultation, and other actions required by applicable Federal environmental laws for this project are being, or have been, carried out by TxDOT pursuant to 23 USC 327 and a Memorandum of Understanding (MOU) dated December 16, 2014, and executed by FHWA and TxDOT. Therefore, TxDOT is preparing this EIS in its role as the lead federal agency under the MOU between TxDOT and FHWA. This MOU assigns to TxDOT FHWA's responsibilities under NEPA and other environmental laws.

Your agency has been identified as having specialized expertise and/or jurisdiction by law with regard to potential environmental effects related to the proposed project. We extend your agency an invitation to become a Participating agency with TxDOT in the development of the RM 150 West Alignment EIS. Participating agencies are responsible to identify, as early as practicable, any issues of concern regarding the project's potential environmental or socioeconomic impacts that could substantially delay or prevent an agency from granting a permit or other approval that is needed for the project. This request is made in accordance with 40 CFR 1501.6 of the Council on Environmental Quality's Regulations for Implementing the Procedural Provision of the National Environmental Policy Act (NEPA).

OUR VALUES: People • Accountability • Trust • Honesty

OUR MISSION: Through collaboration and leadership, we deliver a safe, reliable, and integrated transportation system that enables the movement of people and goods.

An Equal Opportunity Employer

Please respond to TxDOT in writing with an acceptance or denial of the invitation prior to August 2, 2018. If your agency chooses to decline, please specifically state in your response that your agency:

- Has no jurisdiction or authority with respect to the project;
- Has no expertise or information relevant to the project; and,
- Does not intend to submit comments on the project.

Additionally, TxDOT invites you to attend an Agency Scoping meeting for the RM 150 West Alignment EIS. The scoping meeting will be held:

Thursday, August 2, 2018
10:00 a.m. to 12:00 p.m.
TxDOT Austin District
7901 N. Interstate Hwy 35
Austin, Texas 78753

The purpose of this scoping meeting is to present and obtain feedback on the Draft Purpose and Need, Draft Coordination Plan, draft alternatives analysis methodology, potential environmental concerns and project schedule.

If you have any questions or would like to discuss in more detail the project or our agencies' respective roles and responsibilities during the preparation of the RM 150 West Alignment EIS, please contact Jon Geiselbrecht at 512-832-7218, or jon.geiselbrecht@txdot.gov.

Sincerely,



Carlos Swonke

Director of Environmental Affairs Division



125 EAST 11TH STREET, AUSTIN, TEXAS 78701-2483 | 512.463.8588 | WWW.TXDOT.GOV

July 12, 2018

Carter Smith
Executive Director
Texas Parks and Wildlife Department
4200 Smith School Road
Austin, Texas 78744

Re: Invitation to Become Participating Agency on the RM 150 West Alignment
Environmental Impact Study
CSJs: 0805-04-028 and 0016-17-013

Dear Mr. Smith:

Hays County and the Texas Department of Transportation (TxDOT) are proposing the construction of RM 150, a new location roadway facility. The proposed project limits are from RM 150 west of Kyle to I-35. The proposed project length is approximately 6 miles. A Notice of Intent to prepare an Environmental Impact Statement (EIS) was published recently in the Federal Register. The proposed project is included in the Capital Area Metropolitan Planning Organization (CAMPO) 2040 Regional Transportation Plan (adopted May 2015 and amended September 2015), and the Hays County Transportation Plan (adopted January 2013 and amended June 2013).

The environmental review, consultation, and other actions required by applicable Federal environmental laws for this project are being, or have been, carried out by TxDOT pursuant to 23 USC 327 and a Memorandum of Understanding (MOU) dated December 16, 2014, and executed by FHWA and TxDOT. Therefore, TxDOT is preparing this EIS in its role as the lead federal agency under the MOU between TxDOT and FHWA. This MOU assigns to TxDOT FHWA's responsibilities under NEPA and other environmental laws.

Your agency has been identified as having specialized expertise and/or jurisdiction by law with regard to potential environmental effects related to the proposed project. We extend your agency an invitation to become a Participating agency with TxDOT in the development of the RM 150 West Alignment EIS. Participating agencies are responsible to identify, as early as practicable, any issues of concern regarding the project's potential environmental or socioeconomic impacts that could substantially delay or prevent an agency from granting a permit or other approval that is needed for the project. This request is made in accordance with 40 CFR 1501.6 of the Council on Environmental Quality's Regulations for Implementing the Procedural Provision of the National Environmental Policy Act (NEPA).

OUR VALUES: People • Accountability • Trust • Honesty

OUR MISSION: *Through collaboration and leadership, we deliver a safe, reliable, and integrated transportation system that enables the movement of people and goods.*

An Equal Opportunity Employer

Please respond to TxDOT in writing with an acceptance or denial of the invitation prior to August 2, 2018. If your agency chooses to decline, please specifically state in your response that your agency:

- Has no jurisdiction or authority with respect to the project;
- Has no expertise or information relevant to the project; and,
- Does not intend to submit comments on the project.

Additionally, TxDOT invites you to attend an Agency Scoping meeting for the RM 150 West Alignment EIS. The scoping meeting will be held:

Thursday, August 2, 2018
10:00 a.m. to 12:00 p.m.
TxDOT Austin District
7901 N. Interstate Hwy 35
Austin, Texas 78753

The purpose of this scoping meeting is to present and obtain feedback on the Draft Purpose and Need, Draft Coordination Plan, draft alternatives analysis methodology, potential environmental concerns and project schedule.

If you have any questions or would like to discuss in more detail the project or our agencies' respective roles and responsibilities during the preparation of the RM 150 West Alignment EIS, please contact Jon Geiselbrecht at 512-832-7218, or jon.geiselbrecht@txdot.gov.

Sincerely,



Carlos Swonke

Director of Environmental Affairs Division



125 EAST 11TH STREET, AUSTIN, TEXAS 78701-2483 | 512.463.8588 | WWW.TXDOT.GOV

July 12, 2018

Bert Cobb, M.D.
Director, Office of Emergency Services
Hays County Office of Emergency Services
2171 Yarrington Rd., Suite 300
San Marcos, Texas 78666

Re: Invitation to Become Participating Agency on the RM 150 West Alignment
Environmental Impact Study
CSJs: 0805-04-028 and 0016-17-013

Dear Judge Cobb:

Hays County and the Texas Department of Transportation (TxDOT) are proposing the construction of RM 150, a new location roadway facility. The proposed project limits are from RM 150 west of Kyle to I-35. The proposed project length is approximately 6 miles. A Notice of Intent to prepare an Environmental Impact Statement (EIS) was published recently in the Federal Register. The proposed project is included in the Capital Area Metropolitan Planning Organization (CAMPO) 2040 Regional Transportation Plan (adopted May 2015 and amended September 2015), and the Hays County Transportation Plan (adopted January 2013 and amended June 2013).

The environmental review, consultation, and other actions required by applicable Federal environmental laws for this project are being, or have been, carried out by TxDOT pursuant to 23 USC 327 and a Memorandum of Understanding (MOU) dated December 16, 2014, and executed by FHWA and TxDOT. Therefore, TxDOT is preparing this EIS in its role as the lead federal agency under the MOU between TxDOT and FHWA. This MOU assigns to TxDOT FHWA's responsibilities under NEPA and other environmental laws.

Your agency has been identified as having specialized expertise and/or jurisdiction by law with regard to potential environmental effects related to the proposed project. We extend your agency an invitation to become a Participating agency with TxDOT in the development of the RM 150 West Alignment EIS. Participating agencies are responsible to identify, as early as practicable, any issues of concern regarding the project's potential environmental or socioeconomic impacts that could substantially delay or prevent an agency from granting a permit or other approval that is needed for the project. This request is made in accordance with 40 CFR 1501.6 of the Council on Environmental Quality's Regulations for Implementing the Procedural Provision of the National Environmental Policy Act (NEPA).

OUR VALUES: People • Accountability • Trust • Honesty

OUR MISSION: Through collaboration and leadership, we deliver a safe, reliable, and integrated transportation system that enables the movement of people and goods.

An Equal Opportunity Employer

Please respond to TxDOT in writing with an acceptance or denial of the invitation prior to August 2, 2018. If your agency chooses to decline, please specifically state in your response that your agency:

- Has no jurisdiction or authority with respect to the project;
- Has no expertise or information relevant to the project; and,
- Does not intend to submit comments on the project.

Additionally, TxDOT invites you to attend an Agency Scoping meeting for the RM 150 West Alignment EIS. The scoping meeting will be held:

Thursday, August 2, 2018
10:00 a.m. to 12:00 p.m.
TxDOT Austin District
7901 N. Interstate Hwy 35
Austin, Texas 78753

The purpose of this scoping meeting is to present and obtain feedback on the Draft Purpose and Need, Draft Coordination Plan, draft alternatives analysis methodology, potential environmental concerns and project schedule.

If you have any questions or would like to discuss in more detail the project or our agencies' respective roles and responsibilities during the preparation of the RM 150 West Alignment EIS, please contact Jon Geiselbrecht at 512-832-7218, or jon.geiselbrecht@txdot.gov.

Sincerely,



Carlos Swonke

Director of Environmental Affairs Division



125 EAST 11TH STREET, AUSTIN, TEXAS 78701-2483 | 512.463.8588 | WWW.TXDOT.GOV

July 12, 2018

Gary Cutler
Hays County Sheriff
Hays County Sheriff's Office
1307 Uhland Road
San Marcos, Texas 78666

Re: Invitation to Become Participating Agency on the RM 150 West Alignment
Environmental Impact Study
CSJs: 0805-04-028 and 0016-17-013

Dear Mr. Cutler:

Hays County and the Texas Department of Transportation (TxDOT) are proposing the construction of RM 150, a new location roadway facility. The proposed project limits are from RM 150 west of Kyle to I-35. The proposed project length is approximately 6 miles. A Notice of Intent to prepare an Environmental Impact Statement (EIS) was published recently in the Federal Register. The proposed project is included in the Capital Area Metropolitan Planning Organization (CAMPO) 2040 Regional Transportation Plan (adopted May 2015 and amended September 2015), and the Hays County Transportation Plan (adopted January 2013 and amended June 2013).

The environmental review, consultation, and other actions required by applicable Federal environmental laws for this project are being, or have been, carried out by TxDOT pursuant to 23 USC 327 and a Memorandum of Understanding (MOU) dated December 16, 2014, and executed by FHWA and TxDOT. Therefore, TxDOT is preparing this EIS in its role as the lead federal agency under the MOU between TxDOT and FHWA. This MOU assigns to TxDOT FHWA's responsibilities under NEPA and other environmental laws.

Your agency has been identified as having specialized expertise and/or jurisdiction by law with regard to potential environmental effects related to the proposed project. We extend your agency an invitation to become a Participating agency with TxDOT in the development of the RM 150 West Alignment EIS. Participating agencies are responsible to identify, as early as practicable, any issues of concern regarding the project's potential environmental or socioeconomic impacts that could substantially delay or prevent an agency from granting a permit or other approval that is needed for the project. This request is made in accordance with 40 CFR 1501.6 of the Council on Environmental Quality's Regulations for Implementing the Procedural Provision of the National Environmental Policy Act (NEPA).

OUR VALUES: People • Accountability • Trust • Honesty

OUR MISSION: Through collaboration and leadership, we deliver a safe, reliable, and integrated transportation system that enables the movement of people and goods.

An Equal Opportunity Employer

Please respond to TxDOT in writing with an acceptance or denial of the invitation prior to August 2, 2018. If your agency chooses to decline, please specifically state in your response that your agency:

- Has no jurisdiction or authority with respect to the project;
- Has no expertise or information relevant to the project; and,
- Does not intend to submit comments on the project.

Additionally, TxDOT invites you to attend an Agency Scoping meeting for the RM 150 West Alignment EIS. The scoping meeting will be held:

Thursday, August 2, 2018
10:00 a.m. to 12:00 p.m.
TxDOT Austin District
7901 N. Interstate Hwy 35
Austin, Texas 78753

The purpose of this scoping meeting is to present and obtain feedback on the Draft Purpose and Need, Draft Coordination Plan, draft alternatives analysis methodology, potential environmental concerns and project schedule.

If you have any questions or would like to discuss in more detail the project or our agencies' respective roles and responsibilities during the preparation of the RM 150 West Alignment EIS, please contact Jon Geiselbrecht at 512-832-7218, or jon.geiselbrecht@txdot.gov.

Sincerely,



Carlos Swonke

Director of Environmental Affairs Division



125 EAST 11TH STREET, AUSTIN, TEXAS 78701-2483 | 512.463.8588 | WWW.TXDOT.GOV

July 12, 2018

Kate Johnson
Chair
Hays County Historical Commission
111 E. San Antonio St. Ste. 104
San Marcos, Texas 78666

Re: Invitation to Become Participating Agency on the RM 150 West Alignment
Environmental Impact Study
CSJs: 0805-04-028 and 0016-17-013

Dear Ms. Johnson:

Hays County and the Texas Department of Transportation (TxDOT) are proposing the construction of RM 150, a new location roadway facility. The proposed project limits are from RM 150 west of Kyle to I-35. The proposed project length is approximately 6 miles. A Notice of Intent to prepare an Environmental Impact Statement (EIS) was published recently in the Federal Register. The proposed project is included in the Capital Area Metropolitan Planning Organization (CAMPO) 2040 Regional Transportation Plan (adopted May 2015 and amended September 2015), and the Hays County Transportation Plan (adopted January 2013 and amended June 2013).

The environmental review, consultation, and other actions required by applicable Federal environmental laws for this project are being, or have been, carried out by TxDOT pursuant to 23 USC 327 and a Memorandum of Understanding (MOU) dated December 16, 2014, and executed by FHWA and TxDOT. Therefore, TxDOT is preparing this EIS in its role as the lead federal agency under the MOU between TxDOT and FHWA. This MOU assigns to TxDOT FHWA's responsibilities under NEPA and other environmental laws.

Your agency has been identified as having specialized expertise and/or jurisdiction by law with regard to potential environmental effects related to the proposed project. We extend your agency an invitation to become a Participating agency with TxDOT in the development of the RM 150 West Alignment EIS. Participating agencies are responsible to identify, as early as practicable, any issues of concern regarding the project's potential environmental or socioeconomic impacts that could substantially delay or prevent an agency from granting a permit or other approval that is needed for the project. This request is made in accordance with 40 CFR 1501.6 of the Council on Environmental Quality's Regulations for Implementing the Procedural Provision of the National Environmental Policy Act (NEPA).

OUR VALUES: People • Accountability • Trust • Honesty

OUR MISSION: Through collaboration and leadership, we deliver a safe, reliable, and integrated transportation system that enables the movement of people and goods.

An Equal Opportunity Employer

Please respond to TxDOT in writing with an acceptance or denial of the invitation prior to August 2, 2018. If your agency chooses to decline, please specifically state in your response that your agency:

- Has no jurisdiction or authority with respect to the project;
- Has no expertise or information relevant to the project; and,
- Does not intend to submit comments on the project.

Additionally, TxDOT invites you to attend an Agency Scoping meeting for the RM 150 West Alignment EIS. The scoping meeting will be held:

Thursday, August 2, 2018
10:00 a.m. to 12:00 p.m.
TxDOT Austin District
7901 N. Interstate Hwy 35
Austin, Texas 78753

The purpose of this scoping meeting is to present and obtain feedback on the Draft Purpose and Need, Draft Coordination Plan, draft alternatives analysis methodology, potential environmental concerns and project schedule.

If you have any questions or would like to discuss in more detail the project or our agencies' respective roles and responsibilities during the preparation of the RM 150 West Alignment EIS, please contact Jon Geiselbrecht at 512-832-7218, or jon.geiselbrecht@txdot.gov.

Sincerely,



Carlos Swonke

Director of Environmental Affairs Division



125 EAST 11TH STREET, AUSTIN, TEXAS 78701-2483 | 512.463.8588 | WWW.TXDOT.GOV

July 12, 2018

Jerry Borcharding, P.E.
Transportation Director
Hays County Transportation Department
2171 Yarrington Rd.
San Marcos, Texas 78666

Re: Invitation to Become Participating Agency on the RM 150 West Alignment
Environmental Impact Study
CSJs: 0805-04-028 and 0016-17-013

Dear Mr. Borcharding, P.E.:

Hays County and the Texas Department of Transportation (TxDOT) are proposing the construction of RM 150, a new location roadway facility. The proposed project limits are from RM 150 west of Kyle to I-35. The proposed project length is approximately 6 miles. A Notice of Intent to prepare an Environmental Impact Statement (EIS) was published recently in the Federal Register. The proposed project is included in the Capital Area Metropolitan Planning Organization (CAMPO) 2040 Regional Transportation Plan (adopted May 2015 and amended September 2015), and the Hays County Transportation Plan (adopted January 2013 and amended June 2013).

The environmental review, consultation, and other actions required by applicable Federal environmental laws for this project are being, or have been, carried out by TxDOT pursuant to 23 USC 327 and a Memorandum of Understanding (MOU) dated December 16, 2014, and executed by FHWA and TxDOT. Therefore, TxDOT is preparing this EIS in its role as the lead federal agency under the MOU between TxDOT and FHWA. This MOU assigns to TxDOT FHWA's responsibilities under NEPA and other environmental laws.

Your agency has been identified as having specialized expertise and/or jurisdiction by law with regard to potential environmental effects related to the proposed project. We extend your agency an invitation to become a Participating agency with TxDOT in the development of the RM 150 West Alignment EIS. Participating agencies are responsible to identify, as early as practicable, any issues of concern regarding the project's potential environmental or socioeconomic impacts that could substantially delay or prevent an agency from granting a permit or other approval that is needed for the project. This request is made in accordance with 40 CFR 1501.6 of the Council on Environmental Quality's Regulations for Implementing the Procedural Provision of the National Environmental Policy Act (NEPA).

OUR VALUES: People • Accountability • Trust • Honesty

OUR MISSION: Through collaboration and leadership, we deliver a safe, reliable, and integrated transportation system that enables the movement of people and goods.

An Equal Opportunity Employer

Please respond to TxDOT in writing with an acceptance or denial of the invitation prior to August 2, 2018. If your agency chooses to decline, please specifically state in your response that your agency:

- Has no jurisdiction or authority with respect to the project;
- Has no expertise or information relevant to the project; and,
- Does not intend to submit comments on the project.

Additionally, TxDOT invites you to attend an Agency Scoping meeting for the RM 150 West Alignment EIS. The scoping meeting will be held:

Thursday, August 2, 2018
10:00 a.m. to 12:00 p.m.
TxDOT Austin District
7901 N. Interstate Hwy 35
Austin, Texas 78753

The purpose of this scoping meeting is to present and obtain feedback on the Draft Purpose and Need, Draft Coordination Plan, draft alternatives analysis methodology, potential environmental concerns and project schedule.

If you have any questions or would like to discuss in more detail the project or our agencies' respective roles and responsibilities during the preparation of the RM 150 West Alignment EIS, please contact Jon Geiselbrecht at 512-832-7218, or jon.geiselbrecht@txdot.gov.

Sincerely,



Carlos Swonke
Director of Environmental Affairs Division



125 EAST 11TH STREET, AUSTIN, TEXAS 78701-2483 | 512.463.8588 | WWW.TXDOT.GOV

July 12, 2018

Beth Smith
President
Hays County Emergency Services District #5
210 West Moore Street
Kyle, Texas 78640

Re: Invitation to Become Participating Agency on the RM 150 West Alignment
Environmental Impact Study
CSJs: 0805-04-028 and 0016-17-013

Dear Judge Smith:

Hays County and the Texas Department of Transportation (TxDOT) are proposing the construction of RM 150, a new location roadway facility. The proposed project limits are from RM 150 west of Kyle to I-35. The proposed project length is approximately 6 miles. A Notice of Intent to prepare an Environmental Impact Statement (EIS) was published recently in the Federal Register. The proposed project is included in the Capital Area Metropolitan Planning Organization (CAMPO) 2040 Regional Transportation Plan (adopted May 2015 and amended September 2015), and the Hays County Transportation Plan (adopted January 2013 and amended June 2013).

The environmental review, consultation, and other actions required by applicable Federal environmental laws for this project are being, or have been, carried out by TxDOT pursuant to 23 USC 327 and a Memorandum of Understanding (MOU) dated December 16, 2014, and executed by FHWA and TxDOT. Therefore, TxDOT is preparing this EIS in its role as the lead federal agency under the MOU between TxDOT and FHWA. This MOU assigns to TxDOT FHWA's responsibilities under NEPA and other environmental laws.

Your agency has been identified as having specialized expertise and/or jurisdiction by law with regard to potential environmental effects related to the proposed project. We extend your agency an invitation to become a Participating agency with TxDOT in the development of the RM 150 West Alignment EIS. Participating agencies are responsible to identify, as early as practicable, any issues of concern regarding the project's potential environmental or socioeconomic impacts that could substantially delay or prevent an agency from granting a permit or other approval that is needed for the project. This request is made in accordance with 40 CFR 1501.6 of the Council on Environmental Quality's Regulations for Implementing the Procedural Provision of the National Environmental Policy Act (NEPA).

OUR VALUES: People • Accountability • Trust • Honesty

OUR MISSION: Through collaboration and leadership, we deliver a safe, reliable, and integrated transportation system that enables the movement of people and goods.

An Equal Opportunity Employer

Please respond to TxDOT in writing with an acceptance or denial of the invitation prior to August 2, 2018. If your agency chooses to decline, please specifically state in your response that your agency:

- Has no jurisdiction or authority with respect to the project;
- Has no expertise or information relevant to the project; and,
- Does not intend to submit comments on the project.

Additionally, TxDOT invites you to attend an Agency Scoping meeting for the RM 150 West Alignment EIS. The scoping meeting will be held:

Thursday, August 2, 2018
10:00 a.m. to 12:00 p.m.
TxDOT Austin District
7901 N. Interstate Hwy 35
Austin, Texas 78753

The purpose of this scoping meeting is to present and obtain feedback on the Draft Purpose and Need, Draft Coordination Plan, draft alternatives analysis methodology, potential environmental concerns and project schedule.

If you have any questions or would like to discuss in more detail the project or our agencies' respective roles and responsibilities during the preparation of the RM 150 West Alignment EIS, please contact Jon Geiselbrecht at 512-832-7218, or jon.geiselbrecht@txdot.gov.

Sincerely,



Carlos Swonke
Director of Environmental Affairs Division



125 EAST 11TH STREET, AUSTIN, TEXAS 78701-2483 | 512.463.8588 | WWW.TXDOT.GOV

July 12, 2018

Ray Whisenant
Commissioner
Hay County Commissioner, Precinct 4
195 Roger Hanks Parkway
Dripping Springs, Texas 78620

Re: Invitation to Become Participating Agency on the RM 150 West Alignment
Environmental Impact Study
CSJs: 0805-04-028 and 0016-17-013

Dear Commissioner Whisenant:

Hays County and the Texas Department of Transportation (TxDOT) are proposing the construction of RM 150, a new location roadway facility. The proposed project limits are from RM 150 west of Kyle to I-35. The proposed project length is approximately 6 miles. A Notice of Intent to prepare an Environmental Impact Statement (EIS) was published recently in the Federal Register. The proposed project is included in the Capital Area Metropolitan Planning Organization (CAMPO) 2040 Regional Transportation Plan (adopted May 2015 and amended September 2015), and the Hays County Transportation Plan (adopted January 2013 and amended June 2013).

The environmental review, consultation, and other actions required by applicable Federal environmental laws for this project are being, or have been, carried out by TxDOT pursuant to 23 USC 327 and a Memorandum of Understanding (MOU) dated December 16, 2014, and executed by FHWA and TxDOT. Therefore, TxDOT is preparing this EIS in its role as the lead federal agency under the MOU between TxDOT and FHWA. This MOU assigns to TxDOT FHWA's responsibilities under NEPA and other environmental laws.

Your agency has been identified as having specialized expertise and/or jurisdiction by law with regard to potential environmental effects related to the proposed project. We extend your agency an invitation to become a Participating agency with TxDOT in the development of the RM 150 West Alignment EIS. Participating agencies are responsible to identify, as early as practicable, any issues of concern regarding the project's potential environmental or socioeconomic impacts that could substantially delay or prevent an agency from granting a permit or other approval that is needed for the project. This request is made in accordance with 40 CFR 1501.6 of the Council on Environmental Quality's Regulations for Implementing the Procedural Provision of the National Environmental Policy Act (NEPA).

OUR VALUES: People • Accountability • Trust • Honesty

OUR MISSION: Through collaboration and leadership, we deliver a safe, reliable, and integrated transportation system that enables the movement of people and goods.

An Equal Opportunity Employer

Please respond to TxDOT in writing with an acceptance or denial of the invitation prior to August 2, 2018. If your agency chooses to decline, please specifically state in your response that your agency:

- Has no jurisdiction or authority with respect to the project;
- Has no expertise or information relevant to the project; and,
- Does not intend to submit comments on the project.

Additionally, TxDOT invites you to attend an Agency Scoping meeting for the RM 150 West Alignment EIS. The scoping meeting will be held:

Thursday, August 2, 2018
10:00 a.m. to 12:00 p.m.
TxDOT Austin District
7901 N. Interstate Hwy 35
Austin, Texas 78753

The purpose of this scoping meeting is to present and obtain feedback on the Draft Purpose and Need, Draft Coordination Plan, draft alternatives analysis methodology, potential environmental concerns and project schedule.

If you have any questions or would like to discuss in more detail the project or our agencies' respective roles and responsibilities during the preparation of the RM 150 West Alignment EIS, please contact Jon Geiselbrecht at 512-832-7218, or jon.geiselbrecht@txdot.gov.

Sincerely,



Carlos Swonke

Director of Environmental Affairs Division



125 EAST 11TH STREET, AUSTIN, TEXAS 78701-2483 | 512.463.8588 | WWW.TXDOT.GOV

July 12, 2018

Howard Koontz
Director of Planning
City of Kyle Planning Department
P.O. Box 40
Kyle, Texas 78640

Re: Invitation to Become Participating Agency on the RM 150 West Alignment
Environmental Impact Study
CSJs: 0805-04-028 and 0016-17-013

Dear Mr. Koontz:

Hays County and the Texas Department of Transportation (TxDOT) are proposing the construction of RM 150, a new location roadway facility. The proposed project limits are from RM 150 west of Kyle to I-35. The proposed project length is approximately 6 miles. A Notice of Intent to prepare an Environmental Impact Statement (EIS) was published recently in the Federal Register. The proposed project is included in the Capital Area Metropolitan Planning Organization (CAMPO) 2040 Regional Transportation Plan (adopted May 2015 and amended September 2015), and the Hays County Transportation Plan (adopted January 2013 and amended June 2013).

The environmental review, consultation, and other actions required by applicable Federal environmental laws for this project are being, or have been, carried out by TxDOT pursuant to 23 USC 327 and a Memorandum of Understanding (MOU) dated December 16, 2014, and executed by FHWA and TxDOT. Therefore, TxDOT is preparing this EIS in its role as the lead federal agency under the MOU between TxDOT and FHWA. This MOU assigns to TxDOT FHWA's responsibilities under NEPA and other environmental laws.

Your agency has been identified as having specialized expertise and/or jurisdiction by law with regard to potential environmental effects related to the proposed project. We extend your agency an invitation to become a Participating agency with TxDOT in the development of the RM 150 West Alignment EIS. Participating agencies are responsible to identify, as early as practicable, any issues of concern regarding the project's potential environmental or socioeconomic impacts that could substantially delay or prevent an agency from granting a permit or other approval that is needed for the project. This request is made in accordance with 40 CFR 1501.6 of the Council on Environmental Quality's Regulations for Implementing the Procedural Provision of the National Environmental Policy Act (NEPA).

OUR VALUES: People • Accountability • Trust • Honesty

OUR MISSION: Through collaboration and leadership, we deliver a safe, reliable, and integrated transportation system that enables the movement of people and goods.

An Equal Opportunity Employer

Please respond to TxDOT in writing with an acceptance or denial of the invitation prior to August 2, 2018. If your agency chooses to decline, please specifically state in your response that your agency:

- Has no jurisdiction or authority with respect to the project;
- Has no expertise or information relevant to the project; and,
- Does not intend to submit comments on the project.

Additionally, TxDOT invites you to attend an Agency Scoping meeting for the RM 150 West Alignment EIS. The scoping meeting will be held:

Thursday, August 2, 2018
10:00 a.m. to 12:00 p.m.
TxDOT Austin District
7901 N. Interstate Hwy 35
Austin, Texas 78753

The purpose of this scoping meeting is to present and obtain feedback on the Draft Purpose and Need, Draft Coordination Plan, draft alternatives analysis methodology, potential environmental concerns and project schedule.

If you have any questions or would like to discuss in more detail the project or our agencies' respective roles and responsibilities during the preparation of the RM 150 West Alignment EIS, please contact Jon Geiselbrecht at 512-832-7218, or jon.geiselbrecht@txdot.gov.

Sincerely,



Carlos Swonke

Director of Environmental Affairs Division



125 EAST 11TH STREET, AUSTIN, TEXAS 78701-2483 | 512.463.8588 | WWW.TXDOT.GOV

July 12, 2018

Leon Barba
City Engineer
City of Kyle Engineering Department
100 W. Center Street
Kyle, Texas 78640

Re: Invitation to Become Participating Agency on the RM 150 West Alignment
Environmental Impact Study
CSJs: 0805-04-028 and 0016-17-013

Dear Mr. Barba:

Hays County and the Texas Department of Transportation (TxDOT) are proposing the construction of RM 150, a new location roadway facility. The proposed project limits are from RM 150 west of Kyle to I-35. The proposed project length is approximately 6 miles. A Notice of Intent to prepare an Environmental Impact Statement (EIS) was published recently in the Federal Register. The proposed project is included in the Capital Area Metropolitan Planning Organization (CAMPO) 2040 Regional Transportation Plan (adopted May 2015 and amended September 2015), and the Hays County Transportation Plan (adopted January 2013 and amended June 2013).

The environmental review, consultation, and other actions required by applicable Federal environmental laws for this project are being, or have been, carried out by TxDOT pursuant to 23 USC 327 and a Memorandum of Understanding (MOU) dated December 16, 2014, and executed by FHWA and TxDOT. Therefore, TxDOT is preparing this EIS in its role as the lead federal agency under the MOU between TxDOT and FHWA. This MOU assigns to TxDOT FHWA's responsibilities under NEPA and other environmental laws.

Your agency has been identified as having specialized expertise and/or jurisdiction by law with regard to potential environmental effects related to the proposed project. We extend your agency an invitation to become a Participating agency with TxDOT in the development of the RM 150 West Alignment EIS. Participating agencies are responsible to identify, as early as practicable, any issues of concern regarding the project's potential environmental or socioeconomic impacts that could substantially delay or prevent an agency from granting a permit or other approval that is needed for the project. This request is made in accordance with 40 CFR 1501.6 of the Council on Environmental Quality's Regulations for Implementing the Procedural Provision of the National Environmental Policy Act (NEPA).

OUR VALUES: People • Accountability • Trust • Honesty

OUR MISSION: Through collaboration and leadership, we deliver a safe, reliable, and integrated transportation system that enables the movement of people and goods.

An Equal Opportunity Employer

Please respond to TxDOT in writing with an acceptance or denial of the invitation prior to August 2, 2018. If your agency chooses to decline, please specifically state in your response that your agency:

- Has no jurisdiction or authority with respect to the project;
- Has no expertise or information relevant to the project; and,
- Does not intend to submit comments on the project.

Additionally, TxDOT invites you to attend an Agency Scoping meeting for the RM 150 West Alignment EIS. The scoping meeting will be held:

Thursday, August 2, 2018
10:00 a.m. to 12:00 p.m.
TxDOT Austin District
7901 N. Interstate Hwy 35
Austin, Texas 78753

The purpose of this scoping meeting is to present and obtain feedback on the Draft Purpose and Need, Draft Coordination Plan, draft alternatives analysis methodology, potential environmental concerns and project schedule.

If you have any questions or would like to discuss in more detail the project or our agencies' respective roles and responsibilities during the preparation of the RM 150 West Alignment EIS, please contact Jon Geiselbrecht at 512-832-7218, or jon.geiselbrecht@txdot.gov.

Sincerely,



Carlos Swonke

Director of Environmental Affairs Division



125 EAST 11TH STREET, AUSTIN, TEXAS 78701-2483 | 512.463.8588 | WWW.TXDOT.GOV

July 12, 2018

Jeff Barnett
Chief of Police
City of Kyle Police Department
111 North Front Street
Kyle, Texas 78640

Re: Invitation to Become Participating Agency on the RM 150 West Alignment
Environmental Impact Study
CSJs: 0805-04-028 and 0016-17-013

Dear Chief Barnett:

Hays County and the Texas Department of Transportation (TxDOT) are proposing the construction of RM 150, a new location roadway facility. The proposed project limits are from RM 150 west of Kyle to I-35. The proposed project length is approximately 6 miles. A Notice of Intent to prepare an Environmental Impact Statement (EIS) was published recently in the Federal Register. The proposed project is included in the Capital Area Metropolitan Planning Organization (CAMPO) 2040 Regional Transportation Plan (adopted May 2015 and amended September 2015), and the Hays County Transportation Plan (adopted January 2013 and amended June 2013).

The environmental review, consultation, and other actions required by applicable Federal environmental laws for this project are being, or have been, carried out by TxDOT pursuant to 23 USC 327 and a Memorandum of Understanding (MOU) dated December 16, 2014, and executed by FHWA and TxDOT. Therefore, TxDOT is preparing this EIS in its role as the lead federal agency under the MOU between TxDOT and FHWA. This MOU assigns to TxDOT FHWA's responsibilities under NEPA and other environmental laws.

Your agency has been identified as having specialized expertise and/or jurisdiction by law with regard to potential environmental effects related to the proposed project. We extend your agency an invitation to become a Participating agency with TxDOT in the development of the RM 150 West Alignment EIS. Participating agencies are responsible to identify, as early as practicable, any issues of concern regarding the project's potential environmental or socioeconomic impacts that could substantially delay or prevent an agency from granting a permit or other approval that is needed for the project. This request is made in accordance with 40 CFR 1501.6 of the Council on Environmental Quality's Regulations for Implementing the Procedural Provision of the National Environmental Policy Act (NEPA).

OUR VALUES: People • Accountability • Trust • Honesty

OUR MISSION: Through collaboration and leadership, we deliver a safe, reliable, and integrated transportation system that enables the movement of people and goods.

An Equal Opportunity Employer

Please respond to TxDOT in writing with an acceptance or denial of the invitation prior to August 2, 2018. If your agency chooses to decline, please specifically state in your response that your agency:

- Has no jurisdiction or authority with respect to the project;
- Has no expertise or information relevant to the project; and,
- Does not intend to submit comments on the project.

Additionally, TxDOT invites you to attend an Agency Scoping meeting for the RM 150 West Alignment EIS. The scoping meeting will be held:

Thursday, August 2, 2018
10:00 a.m. to 12:00 p.m.
TxDOT Austin District
7901 N. Interstate Hwy 35
Austin, Texas 78753

The purpose of this scoping meeting is to present and obtain feedback on the Draft Purpose and Need, Draft Coordination Plan, draft alternatives analysis methodology, potential environmental concerns and project schedule.

If you have any questions or would like to discuss in more detail the project or our agencies' respective roles and responsibilities during the preparation of the RM 150 West Alignment EIS, please contact Jon Geiselbrecht at 512-832-7218, or jon.geiselbrecht@txdot.gov.

Sincerely,



Carlos Swonke

Director of Environmental Affairs Division



125 EAST 11TH STREET, AUSTIN, TEXAS 78701-2483 | 512.463.8588 | WWW.TXDOT.GOV

July 12, 2018

Scott Sellers
City Manager
City of Kyle
100 W. Center Street
Kyle, Texas 78640

Re: Invitation to Become Participating Agency on the RM 150 West Alignment
Environmental Impact Study
CSJs: 0805-04-028 and 0016-17-013

Dear Mr. Sellers:

Hays County and the Texas Department of Transportation (TxDOT) are proposing the construction of RM 150, a new location roadway facility. The proposed project limits are from RM 150 west of Kyle to I-35. The proposed project length is approximately 6 miles. A Notice of Intent to prepare an Environmental Impact Statement (EIS) was published recently in the Federal Register. The proposed project is included in the Capital Area Metropolitan Planning Organization (CAMPO) 2040 Regional Transportation Plan (adopted May 2015 and amended September 2015), and the Hays County Transportation Plan (adopted January 2013 and amended June 2013).

The environmental review, consultation, and other actions required by applicable Federal environmental laws for this project are being, or have been, carried out by TxDOT pursuant to 23 USC 327 and a Memorandum of Understanding (MOU) dated December 16, 2014, and executed by FHWA and TxDOT. Therefore, TxDOT is preparing this EIS in its role as the lead federal agency under the MOU between TxDOT and FHWA. This MOU assigns to TxDOT FHWA's responsibilities under NEPA and other environmental laws.

Your agency has been identified as having specialized expertise and/or jurisdiction by law with regard to potential environmental effects related to the proposed project. We extend your agency an invitation to become a Participating agency with TxDOT in the development of the RM 150 West Alignment EIS. Participating agencies are responsible to identify, as early as practicable, any issues of concern regarding the project's potential environmental or socioeconomic impacts that could substantially delay or prevent an agency from granting a permit or other approval that is needed for the project. This request is made in accordance with 40 CFR 1501.6 of the Council on Environmental Quality's Regulations for Implementing the Procedural Provision of the National Environmental Policy Act (NEPA).

OUR VALUES: People • Accountability • Trust • Honesty

OUR MISSION: Through collaboration and leadership, we deliver a safe, reliable, and integrated transportation system that enables the movement of people and goods.

An Equal Opportunity Employer

Please respond to TxDOT in writing with an acceptance or denial of the invitation prior to August 2, 2018. If your agency chooses to decline, please specifically state in your response that your agency:

- Has no jurisdiction or authority with respect to the project;
- Has no expertise or information relevant to the project; and,
- Does not intend to submit comments on the project.

Additionally, TxDOT invites you to attend an Agency Scoping meeting for the RM 150 West Alignment EIS. The scoping meeting will be held:

Thursday, August 2, 2018
10:00 a.m. to 12:00 p.m.
TxDOT Austin District
7901 N. Interstate Hwy 35
Austin, Texas 78753

The purpose of this scoping meeting is to present and obtain feedback on the Draft Purpose and Need, Draft Coordination Plan, draft alternatives analysis methodology, potential environmental concerns and project schedule.

If you have any questions or would like to discuss in more detail the project or our agencies' respective roles and responsibilities during the preparation of the RM 150 West Alignment EIS, please contact Jon Geiselbrecht at 512-832-7218, or jon.geiselbrecht@txdot.gov.

Sincerely,



Carlos Swonke

Director of Environmental Affairs Division



125 EAST 11TH STREET, AUSTIN, TEXAS 78701-2483 | 512.463.8588 | WWW.TXDOT.GOV

July 12, 2018

Kyle Taylor
Fire Chief
City of Kyle Fire Department
210 West Moore Street
Kyle, Texas 78640

Re: Invitation to Become Participating Agency on the RM 150 West Alignment
Environmental Impact Study
CSJs: 0805-04-028 and 0016-17-013

Dear Chief Taylor:

Hays County and the Texas Department of Transportation (TxDOT) are proposing the construction of RM 150, a new location roadway facility. The proposed project limits are from RM 150 west of Kyle to I-35. The proposed project length is approximately 6 miles. A Notice of Intent to prepare an Environmental Impact Statement (EIS) was published recently in the Federal Register. The proposed project is included in the Capital Area Metropolitan Planning Organization (CAMPO) 2040 Regional Transportation Plan (adopted May 2015 and amended September 2015), and the Hays County Transportation Plan (adopted January 2013 and amended June 2013).

The environmental review, consultation, and other actions required by applicable Federal environmental laws for this project are being, or have been, carried out by TxDOT pursuant to 23 USC 327 and a Memorandum of Understanding (MOU) dated December 16, 2014, and executed by FHWA and TxDOT. Therefore, TxDOT is preparing this EIS in its role as the lead federal agency under the MOU between TxDOT and FHWA. This MOU assigns to TxDOT FHWA's responsibilities under NEPA and other environmental laws.

Your agency has been identified as having specialized expertise and/or jurisdiction by law with regard to potential environmental effects related to the proposed project. We extend your agency an invitation to become a Participating agency with TxDOT in the development of the RM 150 West Alignment EIS. Participating agencies are responsible to identify, as early as practicable, any issues of concern regarding the project's potential environmental or socioeconomic impacts that could substantially delay or prevent an agency from granting a permit or other approval that is needed for the project. This request is made in accordance with 40 CFR 1501.6 of the Council on Environmental Quality's Regulations for Implementing the Procedural Provision of the National Environmental Policy Act (NEPA).

OUR VALUES: People • Accountability • Trust • Honesty

OUR MISSION: Through collaboration and leadership, we deliver a safe, reliable, and integrated transportation system that enables the movement of people and goods.

An Equal Opportunity Employer

Please respond to TxDOT in writing with an acceptance or denial of the invitation prior to August 2, 2018. If your agency chooses to decline, please specifically state in your response that your agency:

- Has no jurisdiction or authority with respect to the project;
- Has no expertise or information relevant to the project; and,
- Does not intend to submit comments on the project.

Additionally, TxDOT invites you to attend an Agency Scoping meeting for the RM 150 West Alignment EIS. The scoping meeting will be held:

Thursday, August 2, 2018
10:00 a.m. to 12:00 p.m.
TxDOT Austin District
7901 N. Interstate Hwy 35
Austin, Texas 78753

The purpose of this scoping meeting is to present and obtain feedback on the Draft Purpose and Need, Draft Coordination Plan, draft alternatives analysis methodology, potential environmental concerns and project schedule.

If you have any questions or would like to discuss in more detail the project or our agencies' respective roles and responsibilities during the preparation of the RM 150 West Alignment EIS, please contact Jon Geiselbrecht at 512-832-7218, or jon.geiselbrecht@txdot.gov.

Sincerely,



Carlos Swonke
Director of Environmental Affairs Division



125 EAST 11TH STREET, AUSTIN, TEXAS 78701-2483 | 512.463.8588 | WWW.TXDOT.GOV

July 12, 2018

Bert Lumbreras
City Manager
City of San Marcos
630 E. Hopkins
San Marcos, Texas 78666

Re: Invitation to Become Participating Agency on the RM 150 West Alignment
Environmental Impact Study
CSJs: 0805-04-028 and 0016-17-013

Dear Mr. Lumbreras:

Hays County and the Texas Department of Transportation (TxDOT) are proposing the construction of RM 150, a new location roadway facility. The proposed project limits are from RM 150 west of Kyle to I-35. The proposed project length is approximately 6 miles. A Notice of Intent to prepare an Environmental Impact Statement (EIS) was published recently in the Federal Register. The proposed project is included in the Capital Area Metropolitan Planning Organization (CAMPO) 2040 Regional Transportation Plan (adopted May 2015 and amended September 2015), and the Hays County Transportation Plan (adopted January 2013 and amended June 2013).

The environmental review, consultation, and other actions required by applicable Federal environmental laws for this project are being, or have been, carried out by TxDOT pursuant to 23 USC 327 and a Memorandum of Understanding (MOU) dated December 16, 2014, and executed by FHWA and TxDOT. Therefore, TxDOT is preparing this EIS in its role as the lead federal agency under the MOU between TxDOT and FHWA. This MOU assigns to TxDOT FHWA's responsibilities under NEPA and other environmental laws.

Your agency has been identified as having specialized expertise and/or jurisdiction by law with regard to potential environmental effects related to the proposed project. We extend your agency an invitation to become a Participating agency with TxDOT in the development of the RM 150 West Alignment EIS. Participating agencies are responsible to identify, as early as practicable, any issues of concern regarding the project's potential environmental or socioeconomic impacts that could substantially delay or prevent an agency from granting a permit or other approval that is needed for the project. This request is made in accordance with 40 CFR 1501.6 of the Council on Environmental Quality's Regulations for Implementing the Procedural Provision of the National Environmental Policy Act (NEPA).

OUR VALUES: People • Accountability • Trust • Honesty

OUR MISSION: Through collaboration and leadership, we deliver a safe, reliable, and integrated transportation system that enables the movement of people and goods.

An Equal Opportunity Employer

Please respond to TxDOT in writing with an acceptance or denial of the invitation prior to August 2, 2018. If your agency chooses to decline, please specifically state in your response that your agency:

- Has no jurisdiction or authority with respect to the project;
- Has no expertise or information relevant to the project; and,
- Does not intend to submit comments on the project.


Additionally, TxDOT invites you to attend an Agency Scoping meeting for the RM 150 West Alignment EIS. The scoping meeting will be held:

Thursday, August 2, 2018
10:00 a.m. to 12:00 p.m.
TxDOT Austin District
7901 N. Interstate Hwy 35
Austin, Texas 78753

The purpose of this scoping meeting is to present and obtain feedback on the Draft Purpose and Need, Draft Coordination Plan, draft alternatives analysis methodology, potential environmental concerns and project schedule.

If you have any questions or would like to discuss in more detail the project or our agencies' respective roles and responsibilities during the preparation of the RM 150 West Alignment EIS, please contact Jon Geiselbrecht at 512-832-7218, or jon.geiselbrecht@txdot.gov.

Sincerely,



Carlos Swonke

Director of Environmental Affairs Division



125 EAST 11TH STREET, AUSTIN, TEXAS 78701-2483 | 512.463.8588 | WWW.TXDOT.GOV

July 12, 2018

Rachel Ingle
Emergency Management Coordinator
City of San Marcos
630 E. Hopkins
San Marcos, Texas 78666

Re: Invitation to Become Participating Agency on the RM 150 West Alignment
Environmental Impact Study
CSJs: 0805-04-028 and 0016-17-013

Dear Ms. Ingle:

Hays County and the Texas Department of Transportation (TxDOT) are proposing the construction of RM 150, a new location roadway facility. The proposed project limits are from RM 150 west of Kyle to I-35. The proposed project length is approximately 6 miles. A Notice of Intent to prepare an Environmental Impact Statement (EIS) was published recently in the Federal Register. The proposed project is included in the Capital Area Metropolitan Planning Organization (CAMPO) 2040 Regional Transportation Plan (adopted May 2015 and amended September 2015), and the Hays County Transportation Plan (adopted January 2013 and amended June 2013).

The environmental review, consultation, and other actions required by applicable Federal environmental laws for this project are being, or have been, carried out by TxDOT pursuant to 23 USC 327 and a Memorandum of Understanding (MOU) dated December 16, 2014, and executed by FHWA and TxDOT. Therefore, TxDOT is preparing this EIS in its role as the lead federal agency under the MOU between TxDOT and FHWA. This MOU assigns to TxDOT FHWA's responsibilities under NEPA and other environmental laws.

Your agency has been identified as having specialized expertise and/or jurisdiction by law with regard to potential environmental effects related to the proposed project. We extend your agency an invitation to become a Participating agency with TxDOT in the development of the RM 150 West Alignment EIS. Participating agencies are responsible to identify, as early as practicable, any issues of concern regarding the project's potential environmental or socioeconomic impacts that could substantially delay or prevent an agency from granting a permit or other approval that is needed for the project. This request is made in accordance with 40 CFR 1501.6 of the Council on Environmental Quality's Regulations for Implementing the Procedural Provision of the National Environmental Policy Act (NEPA).

OUR VALUES: People • Accountability • Trust • Honesty

OUR MISSION: Through collaboration and leadership, we deliver a safe, reliable, and integrated transportation system that enables the movement of people and goods.

An Equal Opportunity Employer

Please respond to TxDOT in writing with an acceptance or denial of the invitation prior to August 2, 2018. If your agency chooses to decline, please specifically state in your response that your agency:

- Has no jurisdiction or authority with respect to the project;
- Has no expertise or information relevant to the project; and,
- Does not intend to submit comments on the project.

Additionally, TxDOT invites you to attend an Agency Scoping meeting for the RM 150 West Alignment EIS. The scoping meeting will be held:

Thursday, August 2, 2018
10:00 a.m. to 12:00 p.m.
TxDOT Austin District
7901 N. Interstate Hwy 35
Austin, Texas 78753

The purpose of this scoping meeting is to present and obtain feedback on the Draft Purpose and Need, Draft Coordination Plan, draft alternatives analysis methodology, potential environmental concerns and project schedule.

If you have any questions or would like to discuss in more detail the project or our agencies' respective roles and responsibilities during the preparation of the RM 150 West Alignment EIS, please contact Jon Geiselbrecht at 512-832-7218, or jon.geiselbrecht@txdot.gov.

Sincerely,



Carlos Swonke

Director of Environmental Affairs Division



125 EAST 11TH STREET, AUSTIN, TEXAS 78701-2483 | 512.463.8588 | WWW.TXDOT.GOV

July 12, 2018

Les Stephens
Fire Chief
City of San Marcos Fire Department
100 Carlson Circle
San Marcos, Texas 78666

Re: Invitation to Become Participating Agency on the RM 150 West Alignment
Environmental Impact Study
CSJs: 0805-04-028 and 0016-17-013

Dear Chief Stephens:

Hays County and the Texas Department of Transportation (TxDOT) are proposing the construction of RM 150, a new location roadway facility. The proposed project limits are from RM 150 west of Kyle to I-35. The proposed project length is approximately 6 miles. A Notice of Intent to prepare an Environmental Impact Statement (EIS) was published recently in the Federal Register. The proposed project is included in the Capital Area Metropolitan Planning Organization (CAMPO) 2040 Regional Transportation Plan (adopted May 2015 and amended September 2015), and the Hays County Transportation Plan (adopted January 2013 and amended June 2013).

The environmental review, consultation, and other actions required by applicable Federal environmental laws for this project are being, or have been, carried out by TxDOT pursuant to 23 USC 327 and a Memorandum of Understanding (MOU) dated December 16, 2014, and executed by FHWA and TxDOT. Therefore, TxDOT is preparing this EIS in its role as the lead federal agency under the MOU between TxDOT and FHWA. This MOU assigns to TxDOT FHWA's responsibilities under NEPA and other environmental laws.

Your agency has been identified as having specialized expertise and/or jurisdiction by law with regard to potential environmental effects related to the proposed project. We extend your agency an invitation to become a Participating agency with TxDOT in the development of the RM 150 West Alignment EIS. Participating agencies are responsible to identify, as early as practicable, any issues of concern regarding the project's potential environmental or socioeconomic impacts that could substantially delay or prevent an agency from granting a permit or other approval that is needed for the project. This request is made in accordance with 40 CFR 1501.6 of the Council on Environmental Quality's Regulations for Implementing the Procedural Provision of the National Environmental Policy Act (NEPA).

OUR VALUES: People • Accountability • Trust • Honesty

OUR MISSION: Through collaboration and leadership, we deliver a safe, reliable, and integrated transportation system that enables the movement of people and goods.

An Equal Opportunity Employer

Please respond to TxDOT in writing with an acceptance or denial of the invitation prior to August 2, 2018. If your agency chooses to decline, please specifically state in your response that your agency:

- Has no jurisdiction or authority with respect to the project;
- Has no expertise or information relevant to the project; and,
- Does not intend to submit comments on the project.

Additionally, TxDOT invites you to attend an Agency Scoping meeting for the RM 150 West Alignment EIS. The scoping meeting will be held:

Thursday, August 2, 2018
10:00 a.m. to 12:00 p.m.
TxDOT Austin District
7901 N. Interstate Hwy 35
Austin, Texas 78753

The purpose of this scoping meeting is to present and obtain feedback on the Draft Purpose and Need, Draft Coordination Plan, draft alternatives analysis methodology, potential environmental concerns and project schedule.

If you have any questions or would like to discuss in more detail the project or our agencies' respective roles and responsibilities during the preparation of the RM 150 West Alignment EIS, please contact Jon Geiselbrecht at 512-832-7218, or jon.geiselbrecht@txdot.gov.

Sincerely,



Carlos Swonke
Director of Environmental Affairs Division



125 EAST 11TH STREET, AUSTIN, TEXAS 78701-2483 | 512.463.8588 | WWW.TXDOT.GOV

July 12, 2018

Shannon Mattingly
Director of Planning and Development Services
City of San Marcos
630 E. Hopkins
San Marcos, Texas 78666

Re: Invitation to Become Participating Agency on the RM 150 West Alignment
Environmental Impact Study
CSJs: 0805-04-028 and 0016-17-013

Dear Ms. Mattingly:

Hays County and the Texas Department of Transportation (TxDOT) are proposing the construction of RM 150, a new location roadway facility. The proposed project limits are from RM 150 west of Kyle to I-35. The proposed project length is approximately 6 miles. A Notice of Intent to prepare an Environmental Impact Statement (EIS) was published recently in the Federal Register. The proposed project is included in the Capital Area Metropolitan Planning Organization (CAMPO) 2040 Regional Transportation Plan (adopted May 2015 and amended September 2015), and the Hays County Transportation Plan (adopted January 2013 and amended June 2013).

The environmental review, consultation, and other actions required by applicable Federal environmental laws for this project are being, or have been, carried out by TxDOT pursuant to 23 USC 327 and a Memorandum of Understanding (MOU) dated December 16, 2014, and executed by FHWA and TxDOT. Therefore, TxDOT is preparing this EIS in its role as the lead federal agency under the MOU between TxDOT and FHWA. This MOU assigns to TxDOT FHWA's responsibilities under NEPA and other environmental laws.

Your agency has been identified as having specialized expertise and/or jurisdiction by law with regard to potential environmental effects related to the proposed project. We extend your agency an invitation to become a Participating agency with TxDOT in the development of the RM 150 West Alignment EIS. Participating agencies are responsible to identify, as early as practicable, any issues of concern regarding the project's potential environmental or socioeconomic impacts that could substantially delay or prevent an agency from granting a permit or other approval that is needed for the project. This request is made in accordance with 40 CFR 1501.6 of the Council on Environmental Quality's Regulations for Implementing the Procedural Provision of the National Environmental Policy Act (NEPA).

OUR VALUES: People • Accountability • Trust • Honesty

OUR MISSION: Through collaboration and leadership, we deliver a safe, reliable, and integrated transportation system that enables the movement of people and goods.

An Equal Opportunity Employer

Please respond to TxDOT in writing with an acceptance or denial of the invitation prior to August 2, 2018. If your agency chooses to decline, please specifically state in your response that your agency:

- Has no jurisdiction or authority with respect to the project;
- Has no expertise or information relevant to the project; and,
- Does not intend to submit comments on the project.

Additionally, TxDOT invites you to attend an Agency Scoping meeting for the RM 150 West Alignment EIS. The scoping meeting will be held:

Thursday, August 2, 2018
10:00 a.m. to 12:00 p.m.
TxDOT Austin District
7901 N. Interstate Hwy 35
Austin, Texas 78753

The purpose of this scoping meeting is to present and obtain feedback on the Draft Purpose and Need, Draft Coordination Plan, draft alternatives analysis methodology, potential environmental concerns and project schedule.

If you have any questions or would like to discuss in more detail the project or our agencies' respective roles and responsibilities during the preparation of the RM 150 West Alignment EIS, please contact Jon Geiselbrecht at 512-832-7218, or jon.geiselbrecht@txdot.gov.

Sincerely,



Carlos Swonke

Director of Environmental Affairs Division



125 EAST 11TH STREET, AUSTIN, TEXAS 78701-2483 | 512.463.8588 | WWW.TXDOT.GOV

July 12, 2018

Sabas Avila
Asst. Director of Public Services - Transportation
City of San Marcos Transportation Division
630 E. Hopkins
San Marcos, Texas 78666

Re: Invitation to Become Participating Agency on the RM 150 West Alignment
Environmental Impact Study
CSJs: 0805-04-028 and 0016-17-013

Dear Mr. Avila:

Hays County and the Texas Department of Transportation (TxDOT) are proposing the construction of RM 150, a new location roadway facility. The proposed project limits are from RM 150 west of Kyle to I-35. The proposed project length is approximately 6 miles. A Notice of Intent to prepare an Environmental Impact Statement (EIS) was published recently in the Federal Register. The proposed project is included in the Capital Area Metropolitan Planning Organization (CAMPO) 2040 Regional Transportation Plan (adopted May 2015 and amended September 2015), and the Hays County Transportation Plan (adopted January 2013 and amended June 2013).

The environmental review, consultation, and other actions required by applicable Federal environmental laws for this project are being, or have been, carried out by TxDOT pursuant to 23 USC 327 and a Memorandum of Understanding (MOU) dated December 16, 2014, and executed by FHWA and TxDOT. Therefore, TxDOT is preparing this EIS in its role as the lead federal agency under the MOU between TxDOT and FHWA. This MOU assigns to TxDOT FHWA's responsibilities under NEPA and other environmental laws.

Your agency has been identified as having specialized expertise and/or jurisdiction by law with regard to potential environmental effects related to the proposed project. We extend your agency an invitation to become a Participating agency with TxDOT in the development of the RM 150 West Alignment EIS. Participating agencies are responsible to identify, as early as practicable, any issues of concern regarding the project's potential environmental or socioeconomic impacts that could substantially delay or prevent an agency from granting a permit or other approval that is needed for the project. This request is made in accordance with 40 CFR 1501.6 of the Council on Environmental Quality's Regulations for Implementing the Procedural Provision of the National Environmental Policy Act (NEPA).

OUR VALUES: People • Accountability • Trust • Honesty

OUR MISSION: Through collaboration and leadership, we deliver a safe, reliable, and integrated transportation system that enables the movement of people and goods.

An Equal Opportunity Employer

Please respond to TxDOT in writing with an acceptance or denial of the invitation prior to August 2, 2018. If your agency chooses to decline, please specifically state in your response that your agency:

- Has no jurisdiction or authority with respect to the project;
- Has no expertise or information relevant to the project; and,
- Does not intend to submit comments on the project.

Additionally, TxDOT invites you to attend an Agency Scoping meeting for the RM 150 West Alignment EIS. The scoping meeting will be held:

Thursday, August 2, 2018
10:00 a.m. to 12:00 p.m.
TxDOT Austin District
7901 N. Interstate Hwy 35
Austin, Texas 78753

The purpose of this scoping meeting is to present and obtain feedback on the Draft Purpose and Need, Draft Coordination Plan, draft alternatives analysis methodology, potential environmental concerns and project schedule.

If you have any questions or would like to discuss in more detail the project or our agencies' respective roles and responsibilities during the preparation of the RM 150 West Alignment EIS, please contact Jon Geiselbrecht at 512-832-7218, or jon.geiselbrecht@txdot.gov.

Sincerely,



Carlos Swonke
Director of Environmental Affairs Division



125 EAST 11TH STREET, AUSTIN, TEXAS 78701-2483 | 512.463.8588 | WWW.TXDOT.GOV

July 12, 2018

Chase Stapp
Chief of Police
City of San Marcos Police Department
2300 I-35
San Marcos, Texas 78666

Re: Invitation to Become Participating Agency on the RM 150 West Alignment
Environmental Impact Study
CSJs: 0805-04-028 and 0016-17-013

Dear Chief Stapp:

Hays County and the Texas Department of Transportation (TxDOT) are proposing the construction of RM 150, a new location roadway facility. The proposed project limits are from RM 150 west of Kyle to I-35. The proposed project length is approximately 6 miles. A Notice of Intent to prepare an Environmental Impact Statement (EIS) was published recently in the Federal Register. The proposed project is included in the Capital Area Metropolitan Planning Organization (CAMPO) 2040 Regional Transportation Plan (adopted May 2015 and amended September 2015), and the Hays County Transportation Plan (adopted January 2013 and amended June 2013).

The environmental review, consultation, and other actions required by applicable Federal environmental laws for this project are being, or have been, carried out by TxDOT pursuant to 23 USC 327 and a Memorandum of Understanding (MOU) dated December 16, 2014, and executed by FHWA and TxDOT. Therefore, TxDOT is preparing this EIS in its role as the lead federal agency under the MOU between TxDOT and FHWA. This MOU assigns to TxDOT FHWA's responsibilities under NEPA and other environmental laws.

Your agency has been identified as having specialized expertise and/or jurisdiction by law with regard to potential environmental effects related to the proposed project. We extend your agency an invitation to become a Participating agency with TxDOT in the development of the RM 150 West Alignment EIS. Participating agencies are responsible to identify, as early as practicable, any issues of concern regarding the project's potential environmental or socioeconomic impacts that could substantially delay or prevent an agency from granting a permit or other approval that is needed for the project. This request is made in accordance with 40 CFR 1501.6 of the Council on Environmental Quality's Regulations for Implementing the Procedural Provision of the National Environmental Policy Act (NEPA).

OUR VALUES: People • Accountability • Trust • Honesty

OUR MISSION: Through collaboration and leadership, we deliver a safe, reliable, and integrated transportation system that enables the movement of people and goods.

An Equal Opportunity Employer

Please respond to TxDOT in writing with an acceptance or denial of the invitation prior to August 2, 2018. If your agency chooses to decline, please specifically state in your response that your agency:

- Has no jurisdiction or authority with respect to the project;
- Has no expertise or information relevant to the project; and,
- Does not intend to submit comments on the project.

Additionally, TxDOT invites you to attend an Agency Scoping meeting for the RM 150 West Alignment EIS. The scoping meeting will be held:

Thursday, August 2, 2018
10:00 a.m. to 12:00 p.m.
TxDOT Austin District
7901 N. Interstate Hwy 35
Austin, Texas 78753

The purpose of this scoping meeting is to present and obtain feedback on the Draft Purpose and Need, Draft Coordination Plan, draft alternatives analysis methodology, potential environmental concerns and project schedule.

If you have any questions or would like to discuss in more detail the project or our agencies' respective roles and responsibilities during the preparation of the RM 150 West Alignment EIS, please contact Jon Geiselbrecht at 512-832-7218, or jon.geiselbrecht@txdot.gov.

Sincerely,



Carlos Swonke

Director of Environmental Affairs Division



125 EAST 11TH STREET, AUSTIN, TEXAS 78701-2483 | 512.463.8588 | WWW.TXDOT.GOV

July 12, 2018

Ashby Johnson
Executive Director
Capital Area Metropolitan Planning Organizations
3300 N. Interstate 35, Suite 630
Austin, Texas 78705

Re: Invitation to Become Participating Agency on the RM 150 West Alignment
Environmental Impact Study
CSJs: 0805-04-028 and 0016-17-013

Dear Mr. Johnson:

Hays County and the Texas Department of Transportation (TxDOT) are proposing the construction of RM 150, a new location roadway facility. The proposed project limits are from RM 150 west of Kyle to I-35. The proposed project length is approximately 6 miles. A Notice of Intent to prepare an Environmental Impact Statement (EIS) was published recently in the Federal Register. The proposed project is included in the Capital Area Metropolitan Planning Organization (CAMPO) 2040 Regional Transportation Plan (adopted May 2015 and amended September 2015), and the Hays County Transportation Plan (adopted January 2013 and amended June 2013).

The environmental review, consultation, and other actions required by applicable Federal environmental laws for this project are being, or have been, carried out by TxDOT pursuant to 23 USC 327 and a Memorandum of Understanding (MOU) dated December 16, 2014, and executed by FHWA and TxDOT. Therefore, TxDOT is preparing this EIS in its role as the lead federal agency under the MOU between TxDOT and FHWA. This MOU assigns to TxDOT FHWA's responsibilities under NEPA and other environmental laws.

Your agency has been identified as having specialized expertise and/or jurisdiction by law with regard to potential environmental effects related to the proposed project. We extend your agency an invitation to become a Participating agency with TxDOT in the development of the RM 150 West Alignment EIS. Participating agencies are responsible to identify, as early as practicable, any issues of concern regarding the project's potential environmental or socioeconomic impacts that could substantially delay or prevent an agency from granting a permit or other approval that is needed for the project. This request is made in accordance with 40 CFR 1501.6 of the Council on Environmental Quality's Regulations for Implementing the Procedural Provision of the National Environmental Policy Act (NEPA).

OUR VALUES: People • Accountability • Trust • Honesty

OUR MISSION: Through collaboration and leadership, we deliver a safe, reliable, and integrated transportation system that enables the movement of people and goods.

An Equal Opportunity Employer

Please respond to TxDOT in writing with an acceptance or denial of the invitation prior to August 2, 2018. If your agency chooses to decline, please specifically state in your response that your agency:

- Has no jurisdiction or authority with respect to the project;
- Has no expertise or information relevant to the project; and,
- Does not intend to submit comments on the project.

Additionally, TxDOT invites you to attend an Agency Scoping meeting for the RM 150 West Alignment EIS. The scoping meeting will be held:

Thursday, August 2, 2018
10:00 a.m. to 12:00 p.m.
TxDOT Austin District
7901 N. Interstate Hwy 35
Austin, Texas 78753

The purpose of this scoping meeting is to present and obtain feedback on the Draft Purpose and Need, Draft Coordination Plan, draft alternatives analysis methodology, potential environmental concerns and project schedule.

If you have any questions or would like to discuss in more detail the project or our agencies' respective roles and responsibilities during the preparation of the RM 150 West Alignment EIS, please contact Jon Geiselbrecht at 512-832-7218, or jon.geiselbrecht@txdot.gov.

Sincerely,



Carlos Swonke

Director of Environmental Affairs Division

APPENDIX B

Draft Public Involvement Plan



RM 150 West Alignment

From RM 150 west of Kyle to near I-35

Public Involvement Plan

Austin District

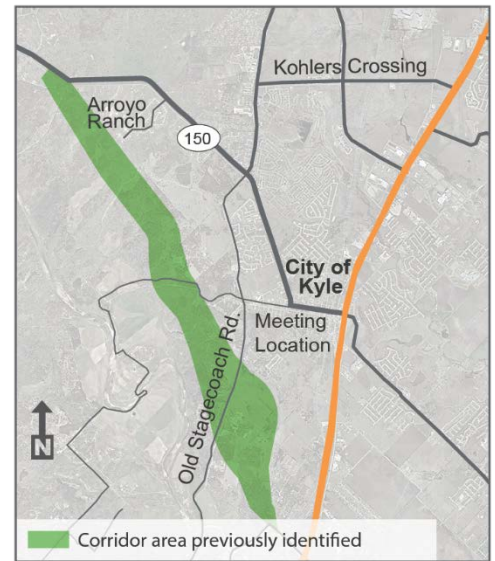
Date: June 2018

CSJ: 0016-17-013, 0805-04-028, 0805-04-027

County: Hays County

Project Description and Background

RM 150 is currently a two-lane roadway. It is one of three primary routes that run east-west through Hays County, the others being RM 12 and FM 967. RM 150 supports movements through the county to and from the I-35 corridor. As Hays County and the cities of Buda and Kyle continue to grow at a pace exceeding Texas growth rates, RM 150 will bear a greater burden of increased traffic, resulting in increased congestion under existing roadway design conditions. In addition, congestion is exacerbated by the presence of an at-grade railroad crossing of the Union Pacific (UP) rail line at Center Street in downtown Kyle.



RM 150 Study Area

Hays County is among the top 10 fastest-growing counties in America. Growth in population will continue to require improvements in the local and regional transportation network.

In 2013, the Hays County Transportation Plan identified the need to improve RM 150 to a four-lane divided roadway, among other projects. In 2014, the County began studying this project and held three public meetings. The study began with a large area and was narrowed down to a preferred corridor area highlighted in green in the study area map.

The County, in partnership with TxDOT, is continuing the environmental review process to identify the alignment for RM 150 from just west of Kyle to near I-35, a total distance of just over six miles.

The realignment could be a four-lane, divided roadway. The project would enhance safety and mobility through Hays County and relieve traffic in and around the city of Kyle by moving the state roadway out of downtown and providing for local access and traffic in downtown.

Project Goal

The purpose of the proposed project is to relieve congestion and improve safety along the existing RM 150 facility from west of Kyle to I-35 and to provide additional links in the transportation network in this growing Central Texas region.

Purpose of Public Involvement Plan

Public participation is an essential part of the development and implementation of a transportation project. This Public Involvement Plan (PIP) will define and guide the public involvement approach the team will take to:

- Purposefully involve the public throughout the process
- Provide early, continuous access to information and perform decision-making processes in a transparent and effective manner
- Use best practices and a range of strategies to involve and inform the public
- Be reflective of stakeholder needs

This public involvement plan is a living document. The plan may be updated to add or remove objectives, stakeholders, strategies or methods as needed to adapt to new and changing circumstances as project development progresses.

Public Involvement Objectives

The objectives of the community engagement process are to:

1. Proactively reach out to the community
2. Facilitate a collaborative process to share information and collect input
3. Provide meaningful opportunities for engagement
4. Create public awareness of the project and the opportunities to participate and share input
5. Incorporate public input in the development and refinement of improvements
6. Include measures for seeking input from and considering the needs of those traditionally underserved by existing transportation systems as defined in Title VI of the Civil Rights Act of 1964, such as low-income, minority, and non-English speaking households who may face challenges accessing employment and other services

Current Issues to Address

The project team identified the following problems to address through the project: congestion, safety, and system linkage.

The project team identified potential consequences of not addressing these problems including:

- Safety of traveling public
- Lack of reliable commute
- Cost of delays:
 - Quality of life issues
 - Frustration of motorists
 - Lack of mobility options

Stakeholders

Public involvement must encompass the full range of community interests. A stakeholder database will be developed and maintained for the project. A list of preliminary stakeholders will be composed from the database created from previous outreach, and includes elected officials, school districts, community residents and businesses, partnering agencies, environmental justice and limited English proficiency populations, and other individuals or groups that may be interested in the proposed project.

Tactics, Tools, Roles, Responsibilities

The public involvement strategies and outreach tools for this project will vary, depending on the various stages on the project development process. Materials designed to share information with the public and establish an understanding of the proposed project will be created in a concise and easy-to-understand format and will be updated as new information is available. The following activities, outreach, tools and materials are planned to be used for this proposed project.

In-Person Public Involvement and Comment Methods

Agency Scoping-

Meetings with Stakeholders—Meetings are available to stakeholders throughout this project. These meetings would provide property owners and stakeholders with general information about the project and an opportunity to visit specifically about their concerns and provide feedback related to the potential impact to their properties. Written summaries of meetings will be provided.

Project Open Houses—Open houses provide an opportunity for citizens to learn about and give input on their needs and concerns for the proposed project. The County plans to host two open houses for the public during this process. The open house format allows attendees to come and go at their convenience, view project materials at their own pace, and visit one-on-one with project team members about issues that are of concern to them. Once a preferred alternative is decided on, these informal meetings can be a vehicle to hear from the community about the chosen alternative, answer questions about how it was chosen and the next steps in the project development process. There will be a 15-day comment period following each open house to allow members of the public to submit feedback to be included in the official public record. After each open house, a written summary of the meeting will be prepared, including the comments received and responses to comments.

Public Hearing—The County will conduct a public hearing, in coordination with TxDOT, to gather community comments and input on the draft environmental impact statement and

the preferred alternative. A presentation will be given to review environmental findings/documents with the community, inform citizens about the factors considered in the environmental process, and provide an opportunity for comment. A court reporter will be present to record the hearing proceedings. There will be a 15-day comment period following the hearing to allow members of the public to submit feedback to be included in the official public record. Following the public hearing, a summary will be prepared per NEPA guidelines, including general information on the public hearing; copies of the court reporter transcript; records of comments received and responses provided; a statement regarding consideration of the economic, social, and environmental impacts of the project; a statement regarding consideration of the statutory provisions of the Civil Rights Act of 1964 and the Civil Rights Restoration Act of 1987; a statement regarding the project's consistency with planning goals and objectives; and a statement that the requirements of 43 TAC Part 1, Chapter 2, Subchapter E, §2.109 have been met.

Virtual/Online Public Involvement and Comment Methods

Project Webpage—A dedicated project website will share important information about the project. This website will provide all public meeting information, as well as offer the opportunity for a virtual open house. It will also house project information including maps, fact sheets, and meeting materials. In addition, the website will have information on how to sign up to receive project updates by email.

Social Media—Posts and messages will be prepared for distribution through existing Hays County social media pages. Messages will be developed to share meeting notices, project updates, and to generate general interest and participation in the project development process.

Information and Notification Methods

Project Database—An essential component of the public involvement strategy will be the development of a comprehensive stakeholder database of residents, community and civic organizations, businesses, special interest groups, and other interested parties. Emails will be collected when possible and communication will be logged. The database will be updated throughout the project as new stakeholders are identified.

Project Fact Sheet—The team will develop a project fact sheet to share specific project information, how to participate in the process, and how to submit comments. Information will be represented in an easy-to-understand format and will include contact information and how to be added to the database to receive email updates. The handout will be updated as the project progresses and will be posted on the project webpage and shared at the open house meetings and public hearing.

Email Updates—Over the course of the project, our team will prepare and distribute email updates to keep project stakeholders and the public informed on the proposed project. These updates will be distributed prior to the open houses and public hearing. Additional updates will be distributed throughout the course of the project to share information about the progress of the project. The updates will be emailed to contacts in the project database and posted to the project webpage.

Media Relations—Hays County and the project team will provide project information to the local media. A media alert will be created to promote coverage of the meetings. Materials will also be gathered for the media, as needed. Legal notices and/or display advertisements for the open houses and public hearing will be placed in local newspapers. Possible publications are the Hays Free Press, Community Impact, San Marcos Mercury, and El Mundo.

Specific Areas of Environmental Concern

Environmental Justice—Executive Order 12898 “Federal Actions to Address Environmental Justice in Minority Populations and Low-Income Populations” requires each federal agency to “make achieving environmental justice part of its mission by identifying and addressing, as appropriate, disproportionately high and adverse human health or environmental effects of its programs, policies, and activities on minority populations and low-income populations.” In accordance with this order, attempts will be made to reach all demographics of the population affected by the proposed project. Through outreach, environmental justice populations will be notified and reminded of all public engagement activities and will be provided with access to all publicly-released project materials.

Limited English Proficiency—Individuals who have a limited proficiency in reading, writing, or understanding the English language are considered to have Limited English Proficiency (LEP). Executive Order 13166 “Improving Access to Services for Persons with Limited English Proficiency” requires agencies to examine the services they provide, identify any need for services to those with LEP, and develop and implement a system to provide those services so that LEP persons can have meaningful access to them. To improve access for minority, low income, and LEP populations, the following steps will be taken:

- Project materials will be translated, as needed
- Spanish translators will be present at public meetings, as needed
- Additional locations or organizations will be identified to post or disseminate public meeting details (e.g. churches, community centers, community service facilities)
- Additional outreach to organizations in the project area that assist LEP individuals will be conducted

Timeline

Implementing this public involvement plan will be a combined effort with Hays County and their General Engineering Consultants HNTB and Prime Strategies, the TxDOT Austin District, and the project team, which includes consultants from K Friese, Hicks & Company, and CD&P.

A proposed timeline follows:

Task	Responsible Party	Assisting Party	Deadline
Develop public involvement plan	Consultants	Austin District, TPP/PI Section	Summer 2018
Create and print fact sheet	Consultants	Austin District, TPP/PI Section	Summer 2018
Update project webpage	Consultants	Austin District	Summer 2018
Distribute flyers, fact sheets	Consultants, Austin District	TPP/PI Section	Summer 2018
Arrange meeting locations	Consultants	Austin District, TPP/PI Section	Summer 2018
Post meetings on TxDOT hearings and meetings page	TPP/PI Section	Austin District, CD&P	Summer 2018
Post Changeable Message Signs with meeting info	Austin District	South Travis Area Office	Summer 2018
Create and print meeting graphics, handouts	Consultants	Austin District, TPP/PI Section	Summer 2018
Write and send news release	Austin District, Hays County	CD&P	Summer 2018
Meeting set up and take down	Consultants	Austin District, TPP/PI Section	Summer 2018
Provide staff at meeting	Austin District, TPP/PI Section, Consultants	Austin District, TPP/PI Section, Consultants	Summer 2018
Compile and maintain stakeholder/citizen mailing list (both mail and email addresses)	Consultants	Austin District, TPP/PI Section	Throughout project
Write meeting summary and analysis	Consultants, Austin District	Austin District	Summer 2018
Write responses to citizen comments	Consultants, Austin District	Austin District	Summer 2018
Compile comment and response document	Consultants, Austin District	Austin District	Summer/fall 2018

Task	Responsible Party	Assisting Party	Deadline
Send acknowledgement and response letters	Consultants, Austin District	Austin District	Summer/fall 2018

As noted above, this timeline captures the first part of the public involvement effort for an initial public open house. As the project development process continues, tasks and timelines may be added to this chart.

Evaluation

To ensure a high level of public engagement is achieved in the most effective and efficient manner, our team will monitor and measure the effectiveness of the public involvement effort and see how it met the plan's objectives. As input is collected, the team will encourage participants to provide feedback on the quality of public involvement activities and the community outreach strategy employed.

NOTES

Media Request Protocol

The media will seek information from multiple sources. These potentially include TxDOT, project team members, neighborhoods, businesses, or other stakeholders within the corridor. Media requests for information internal to the Project Team must be directed to TxDOT Austin District Public Information Officer Diann Hodges or Hays County Communications Manager Laureen Chernow immediately. Diann Hodges and Laureen Chernow are the designated spokespersons for media inquiries unless that protocol is modified by TxDOT or Hays County.

Approval Process for Communications Products—Any communication product (ex. fact sheet, newsletter) created by district staff and/or a consultant must go through the following approval process:

- Internal QA/QC review with TxDOT staff
- Concurrent review by TPP/PI Section
- PowerPoint presentations must be reviewed by TxDOT Communications Division

TxDOT Branding

All materials created must be within current TxDOT branding guidelines.

PROJECT TEAM

Primary Project Contacts

Jon Geiselbrecht
Project Manager
TxDOT Austin District
512-832-7218
Jon.Geiselbrecht@txdot.gov

Laura Harris
Hays County GEC Project Manager
HNTB
512-744-9082
lharris@hntb.com

Paula Gruber
Hays County GEC Project Manager
Prime Strategies
512-637-6831
Paula@primestrategies.net

Joe Cantalupo
Project Manager, Engineering
K Friese + Associates
512-338-1704
jcantalupo@kfriese.com

Jason Buntz
Project Manager, Environmental
Hicks & Company
512-478-0858
jbuntz@hicksenv.com

Arin Gray
Project Manager, Public Involvement
CD&P
512-533-9100
agray@cdandp.com

Reminder: This public involvement plan is a living document that is subject to change, based on district and public needs. The plan may be updated at any time to add or remove objectives, stakeholders, strategies or methods as needed to adapt to new and changing circumstances as project development progresses.