

Appendix C

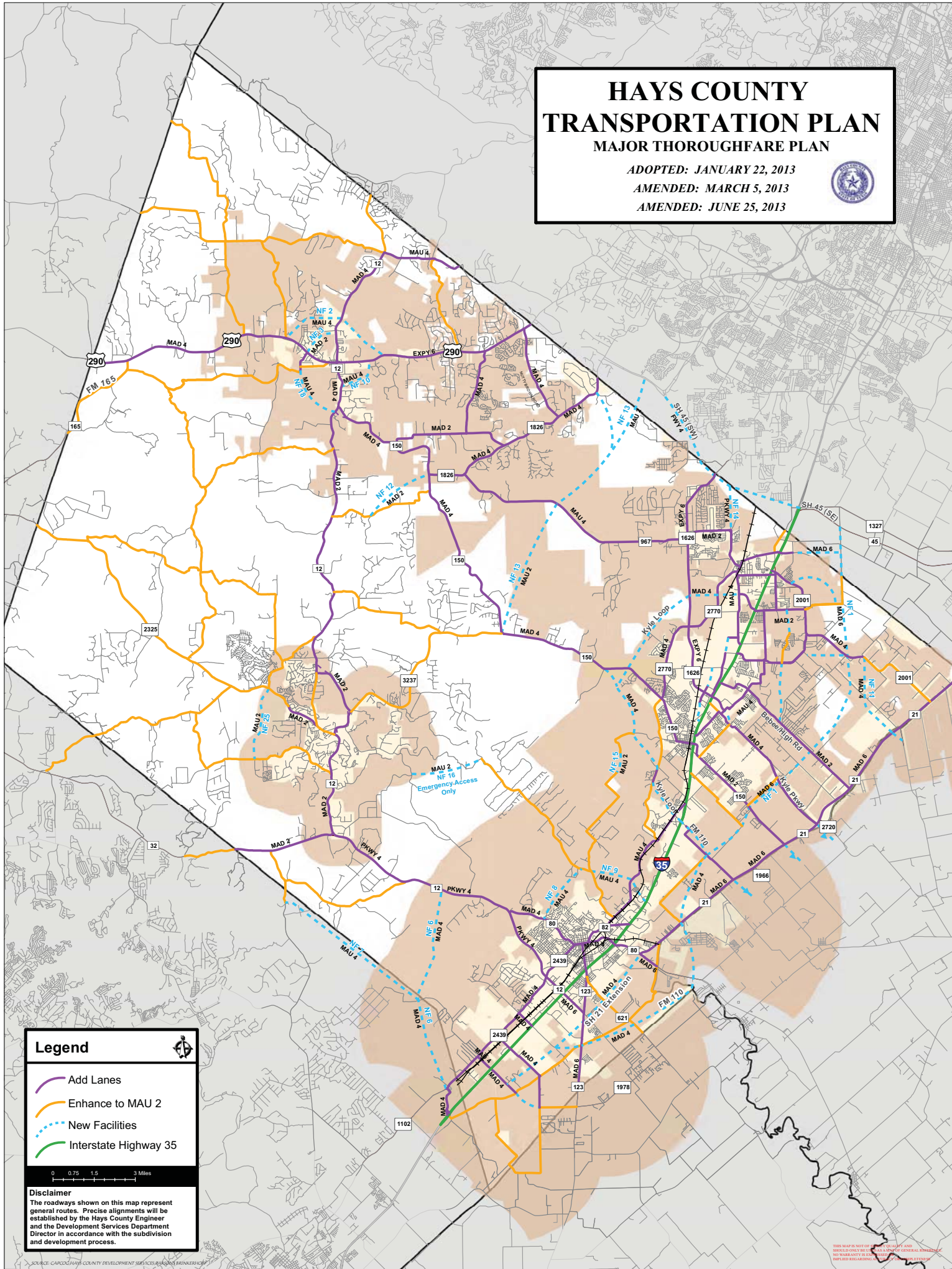
Meeting Exhibits

WELCOME

The County wants to work closely with the public to make this project the best it can be. Tonight we are here to share project information with the public and obtain public input to be considered during the development of the project.



ADOPTED: JANUARY 22, 2013
AMENDED: MARCH 5, 2013
AMENDED: JUNE 25, 2013



HCTP DESCRIPTION

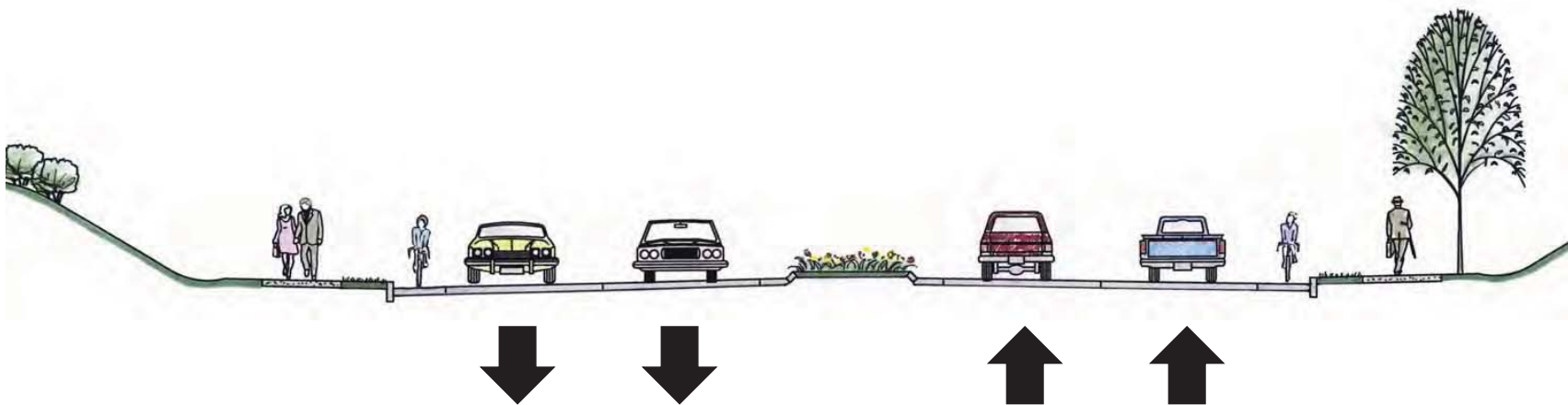
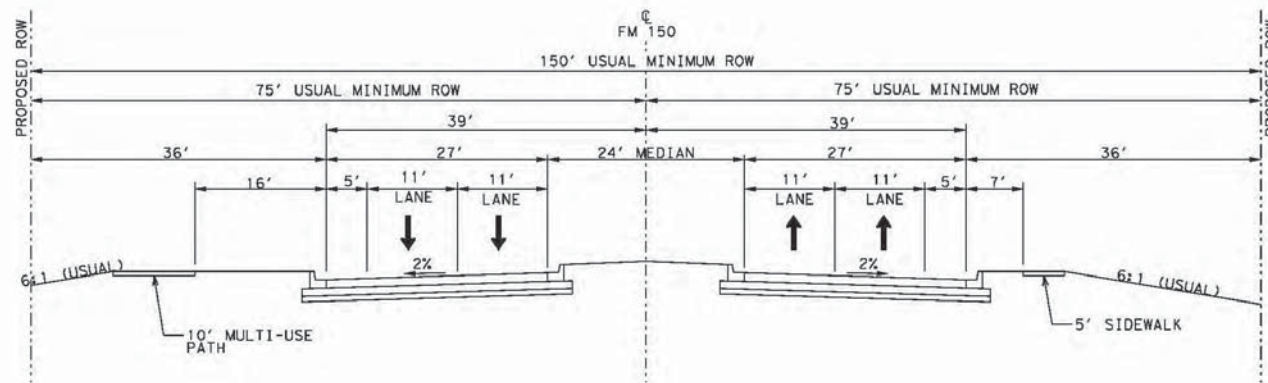
Hays County Transportation Plan, adopted in January 2013, proposes a re-alignment of FM 150 to alleviate congestion downtown by providing an alternate route for through traffic west of Kyle.

Project Highlights:

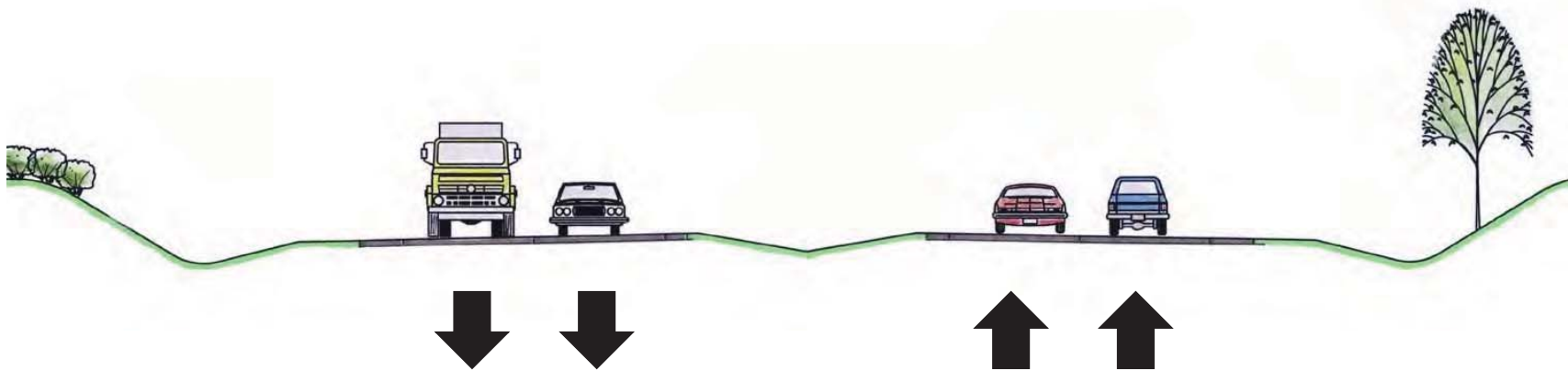
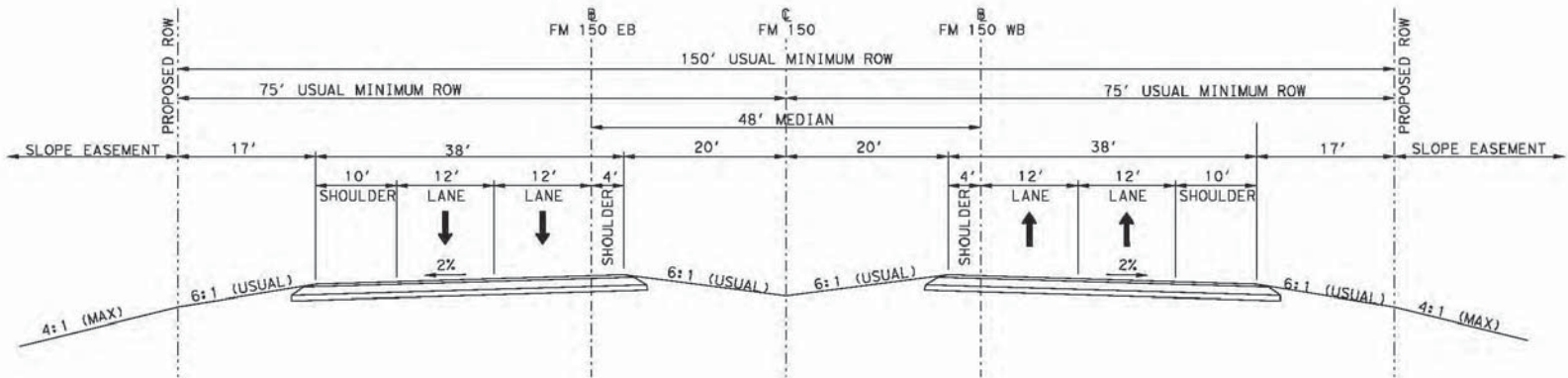
- Limited space to improve existing FM 150 in downtown Kyle
- Create an alternate route west of downtown Kyle
- Reduce congestion by providing separate routes for through traffic and local traffic
- Propose 4-lane divided roadway with a typical 150 feet of ROW
- Improve pedestrian and bicycle safety
- Provide a potential connection to the future FM 110 in San Marcos

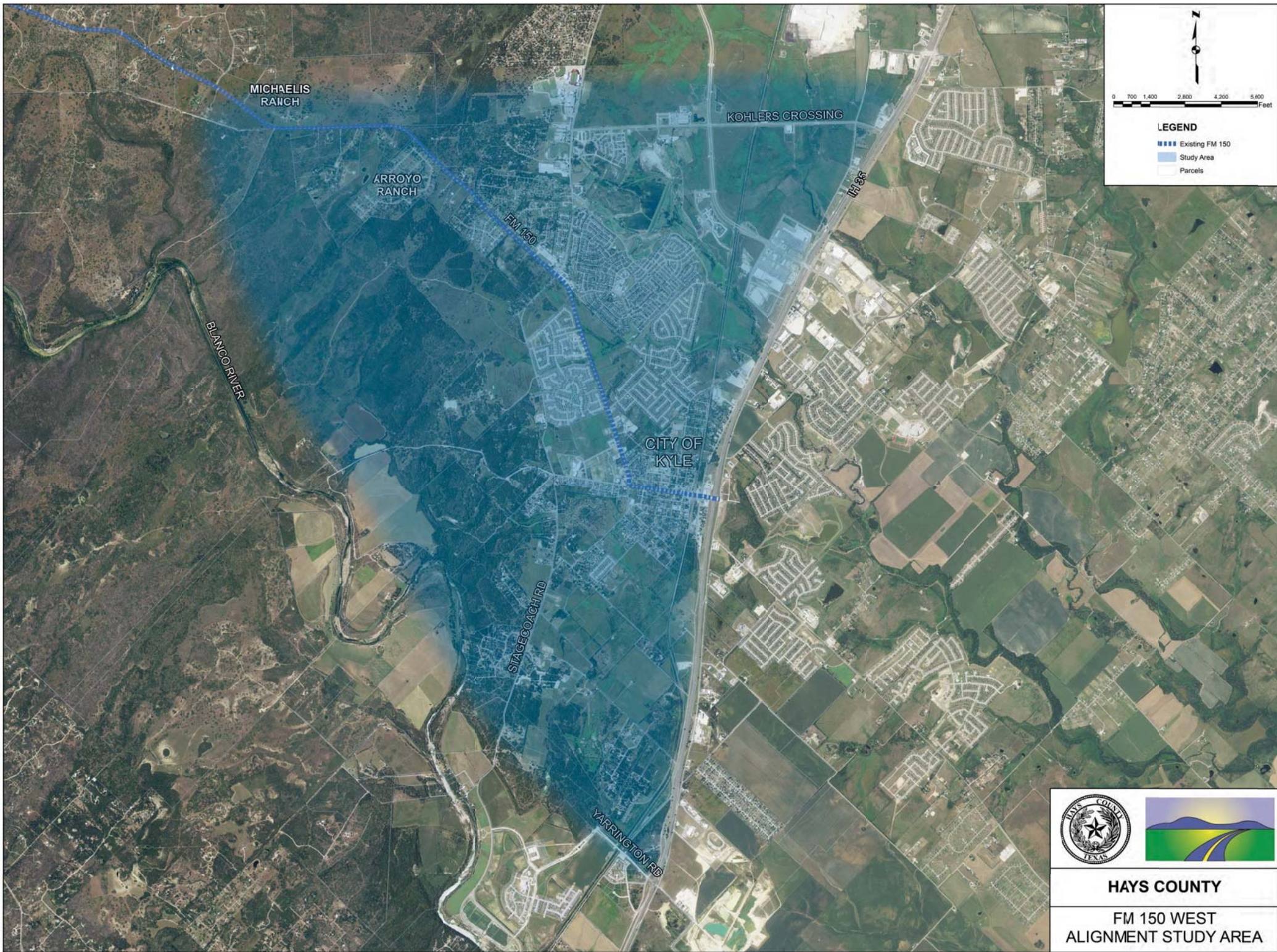




Typical Urban Roadway Section



Typical Rural Roadway Section









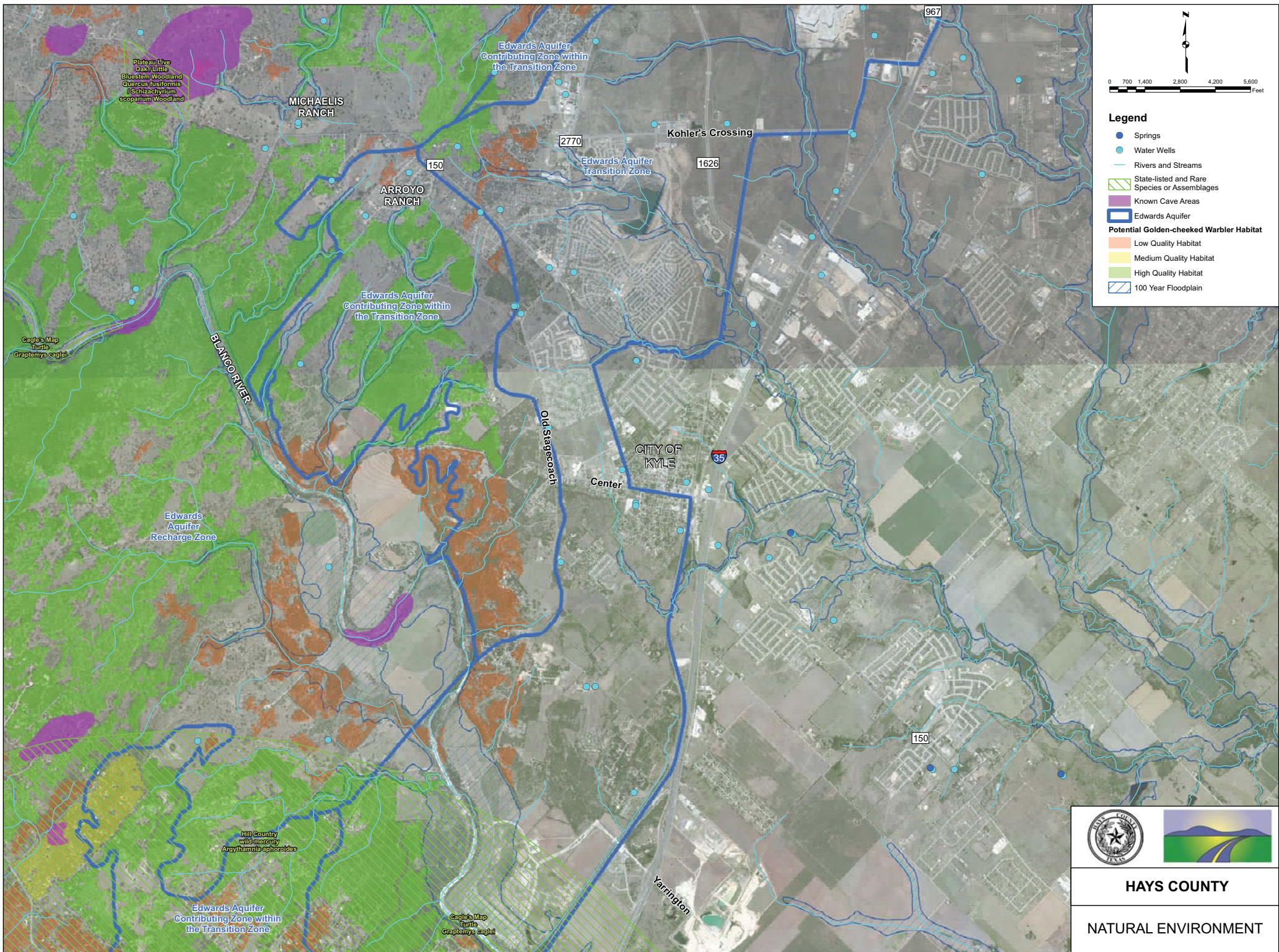
LEGEND

- Existing FM 150
- Study Area
- Parcels



HAYS COUNTY

FM 150 WEST
ALIGNMENT STUDY AREA



Plateau Live Oak / Little
Bluestem Woodland
Quercus fusiformis
Leschiastrum
ecoparium Woodland

MICHAELIS RANCH

Edwards Aquifer
Contributing Zone within
the Transition Zone

2770

Kohler's Crossing

1626

Edwards Aquifer
Transition Zone

ARROYO RANCH

Edwards Aquifer
Contributing Zone within
the Transition Zone

BLANCO RIVER

Edwards
Aquifer
Recharge Zone

Old Stagecoach

CITY OF
KYLE

Center

35

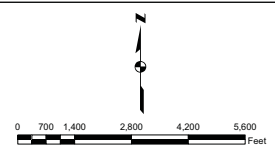
150

Hill Country
wildmercury
Argythamnia aphorides

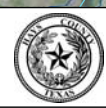
Edwards Aquifer
Contributing Zone within
the Transition Zone

Google Map
Turtle
Graptemys caglei

Yarrington

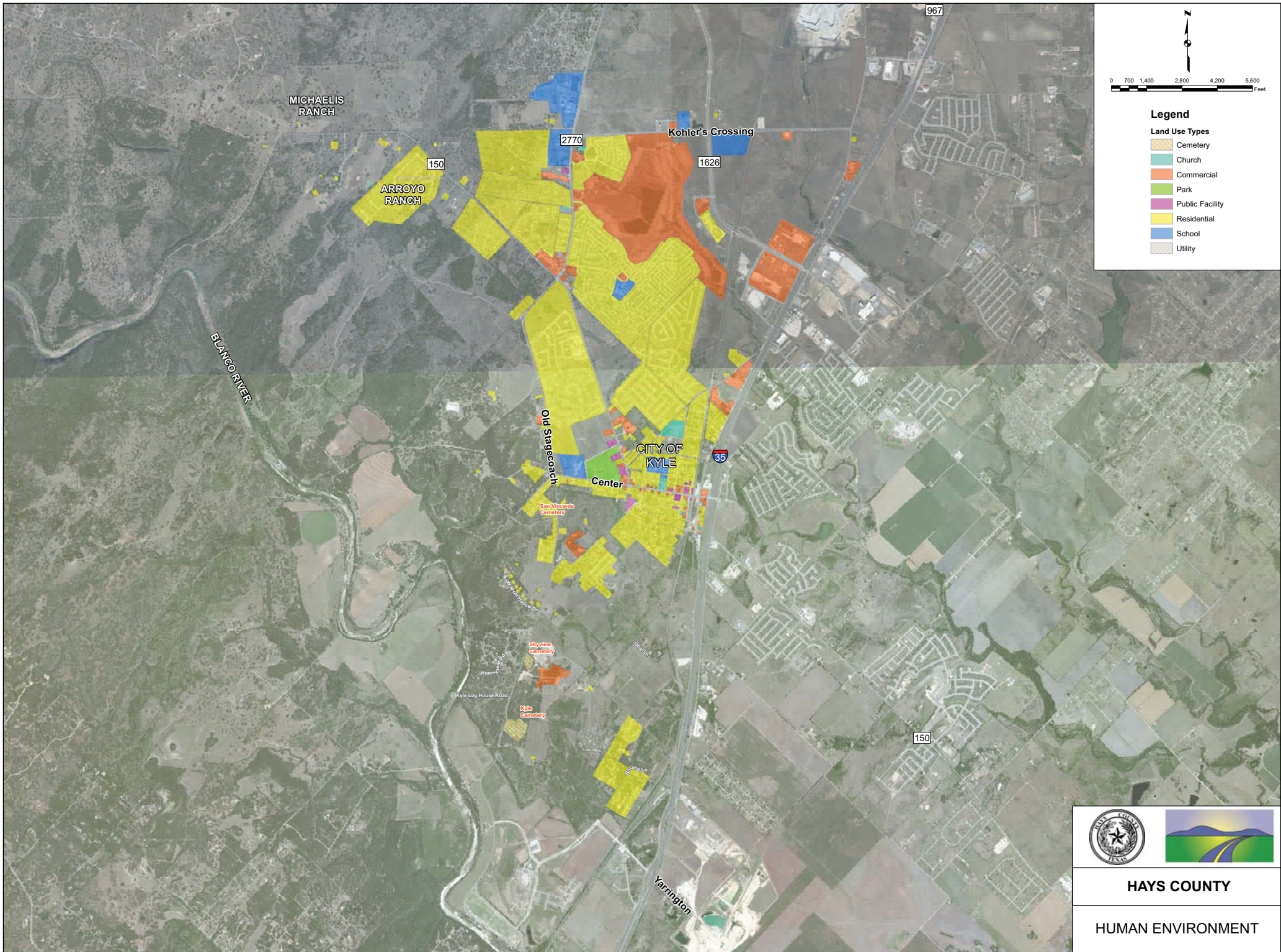




- Legend**
- Springs
 - Water Wells
 - Rivers and Streams
 - ▨ State-listed and Rare Species or Assemblages
 - Known Cave Areas
 - Edwards Aquifer
 - Potential Golden-cheeked Warbler Habitat
 - Low Quality Habitat
 - Medium Quality Habitat
 - High Quality Habitat
 - ▨ 100 Year Floodplain



HAYS COUNTY



NATURAL ENVIRONMENT



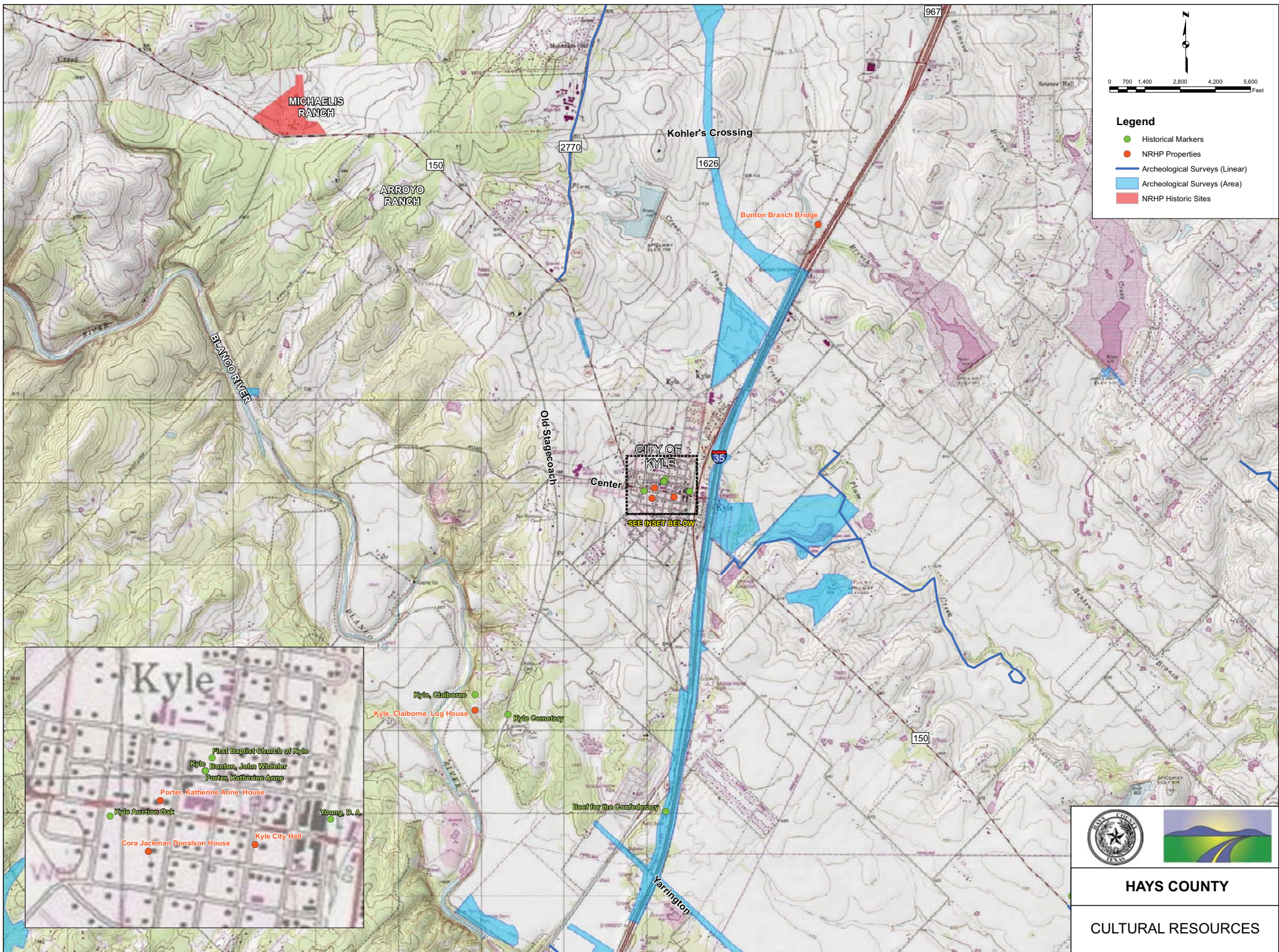
Legend
Land Use Types

- Cemetery
- Church
- Commercial
- Park
- Public Facility
- Residential
- School
- Utility



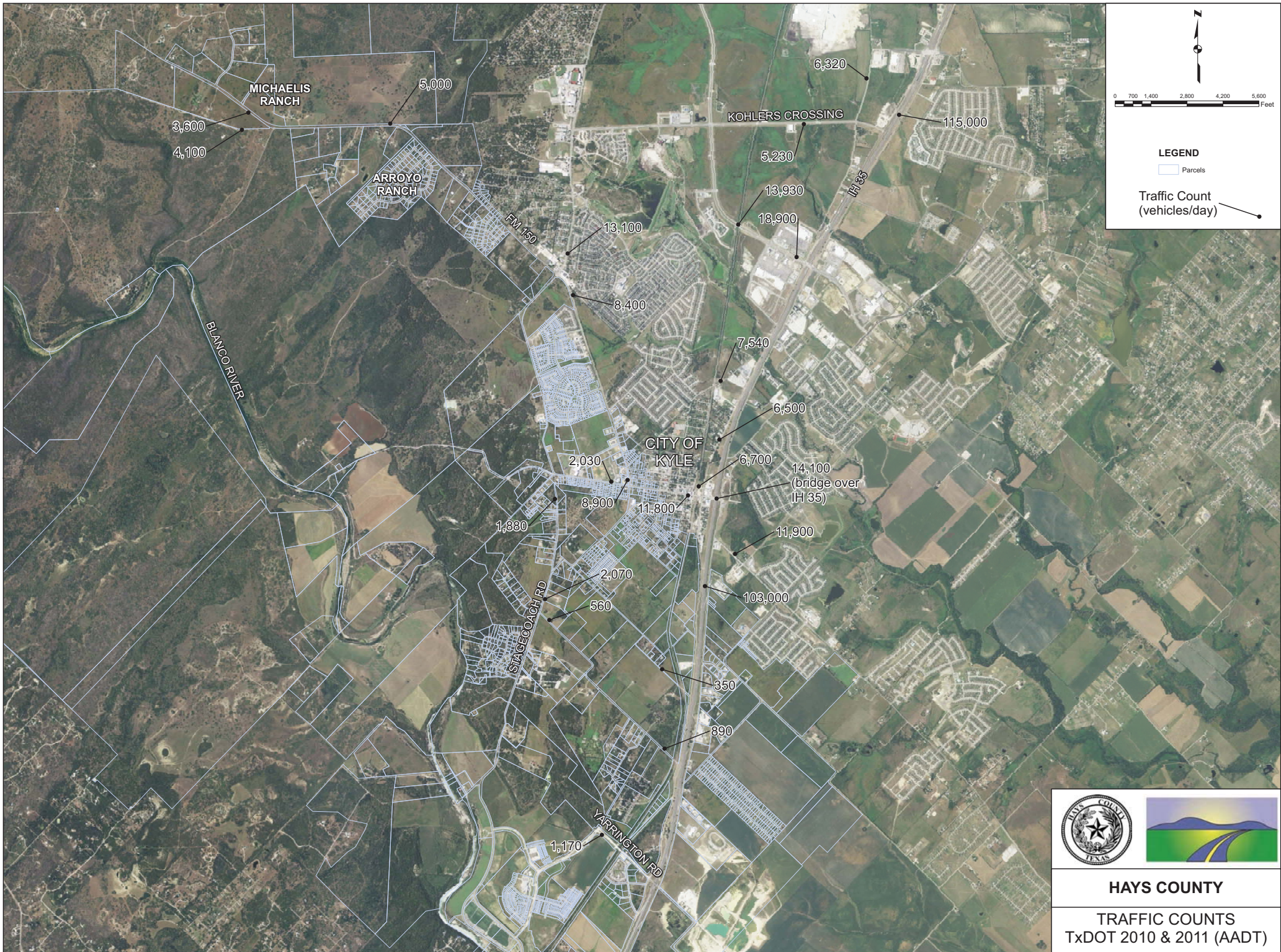
HAYS COUNTY

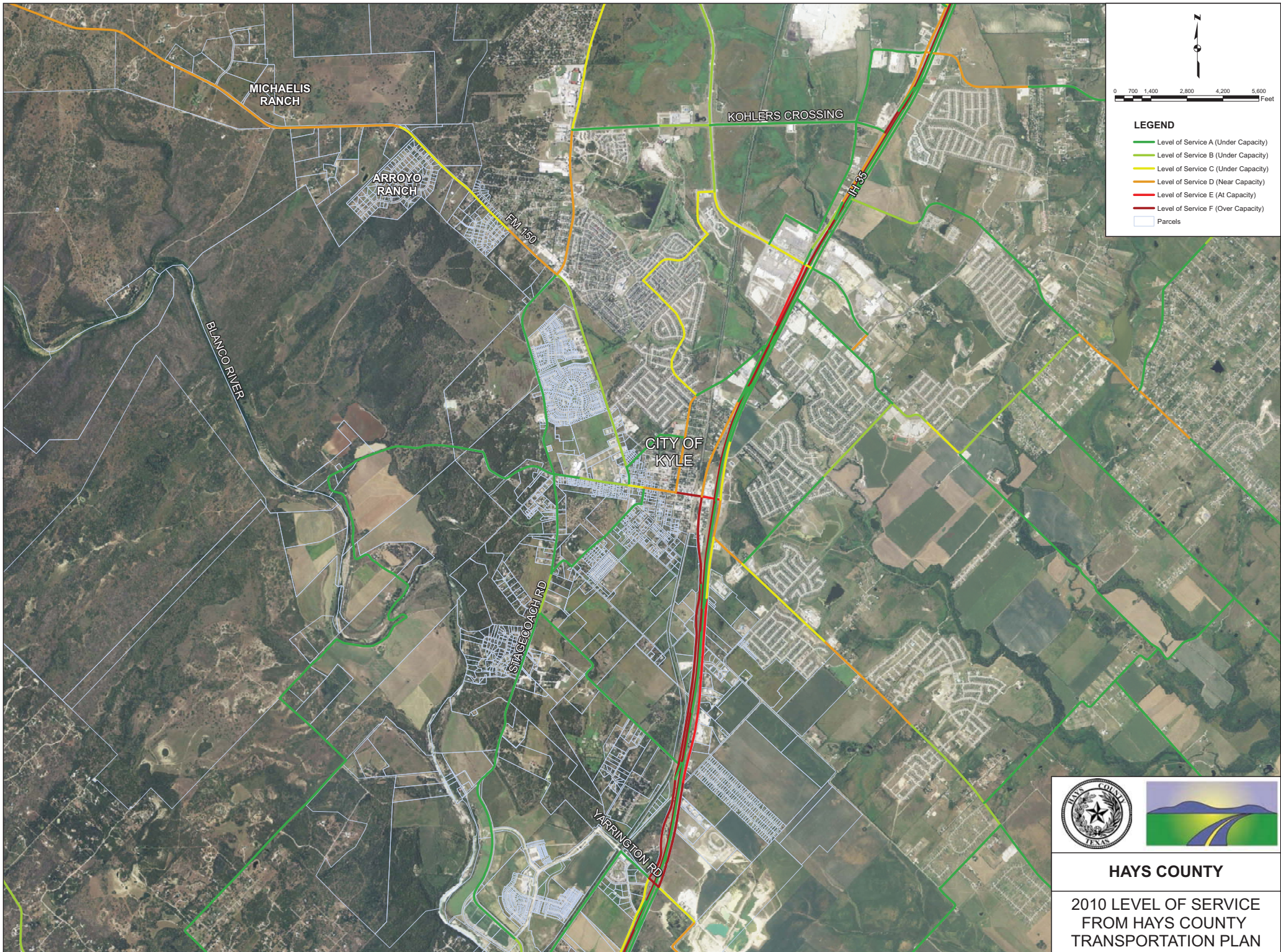
HUMAN ENVIRONMENT



HAYS COUNTY

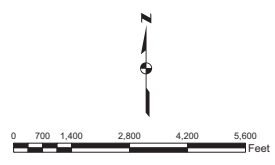
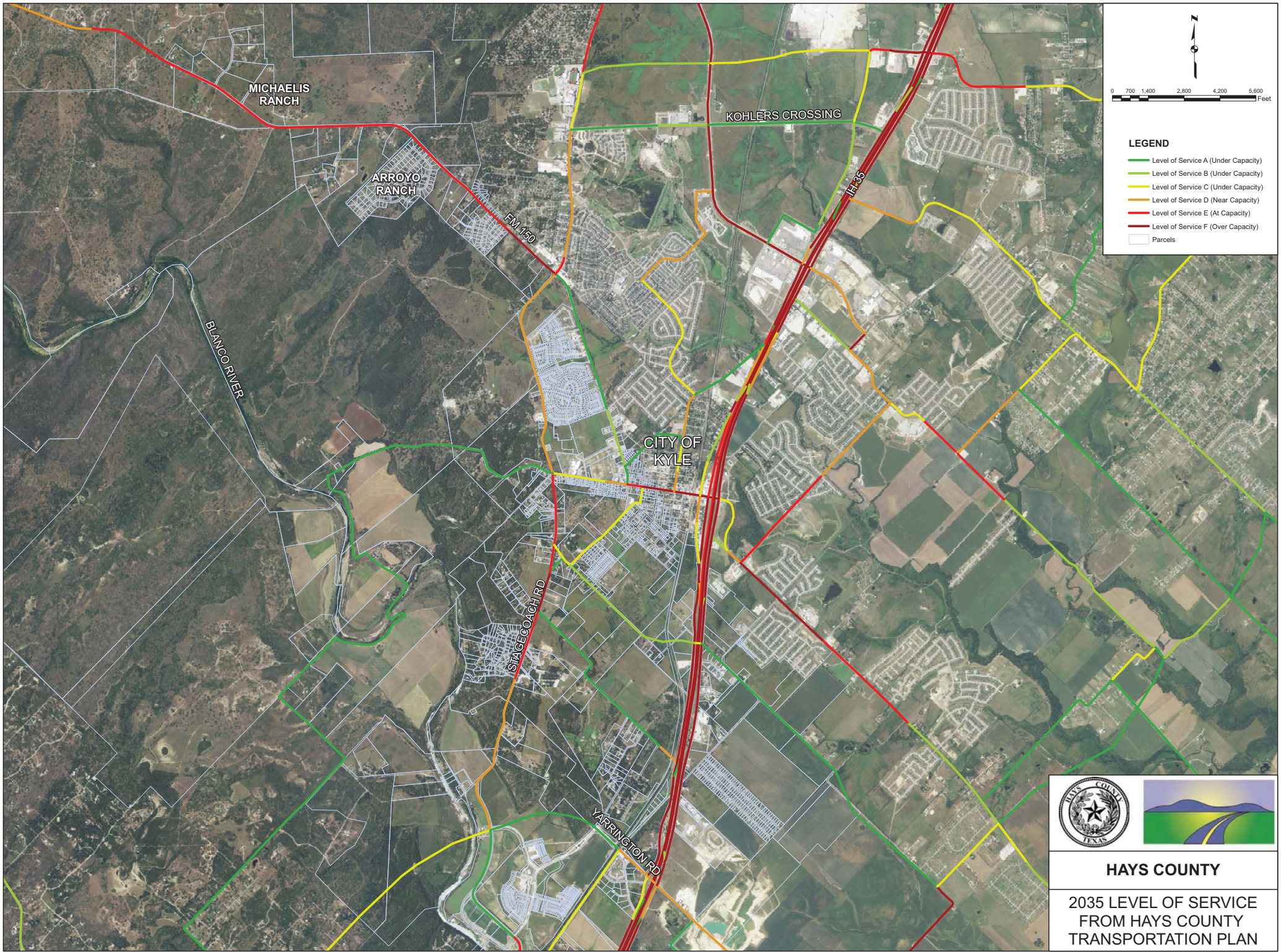
CULTURAL RESOURCES





HAYS COUNTY

**2010 LEVEL OF SERVICE
FROM HAYS COUNTY
TRANSPORTATION PLAN**

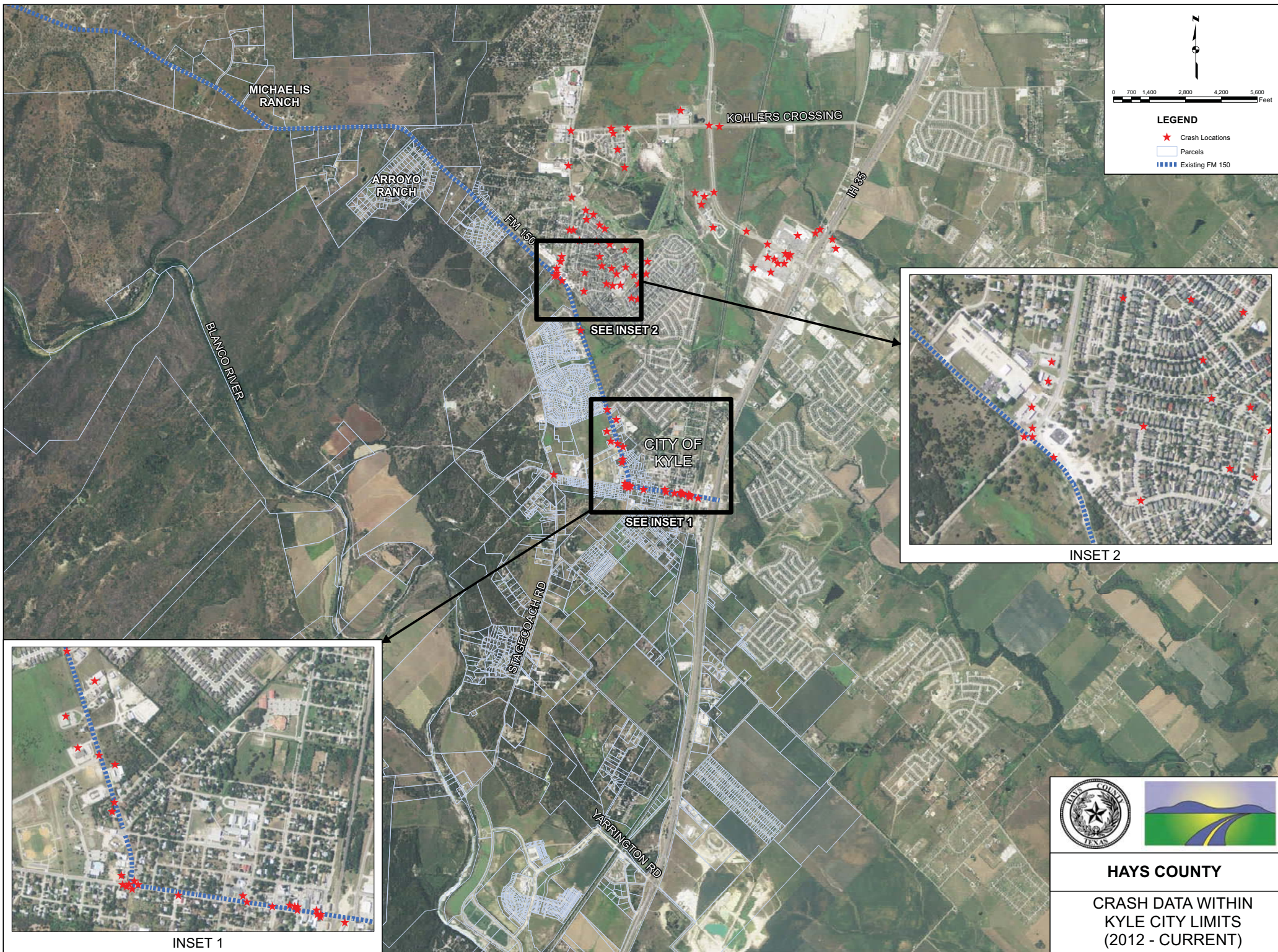


- LEGEND**
- Level of Service A (Under Capacity)
 - Level of Service B (Under Capacity)
 - Level of Service C (Under Capacity)
 - Level of Service D (Near Capacity)
 - Level of Service E (At Capacity)
 - Level of Service F (Over Capacity)
 - Parcels

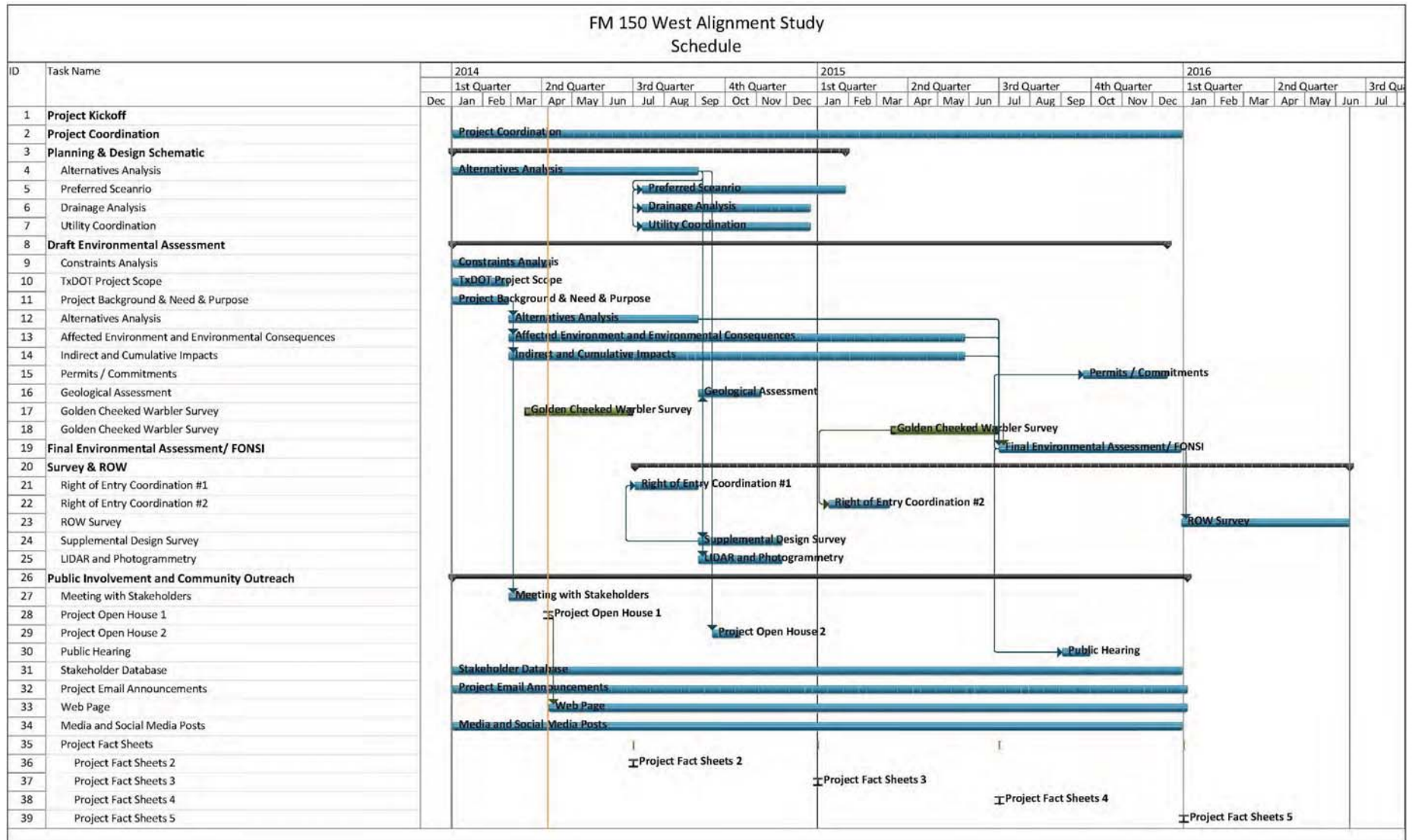


HAYS COUNTY

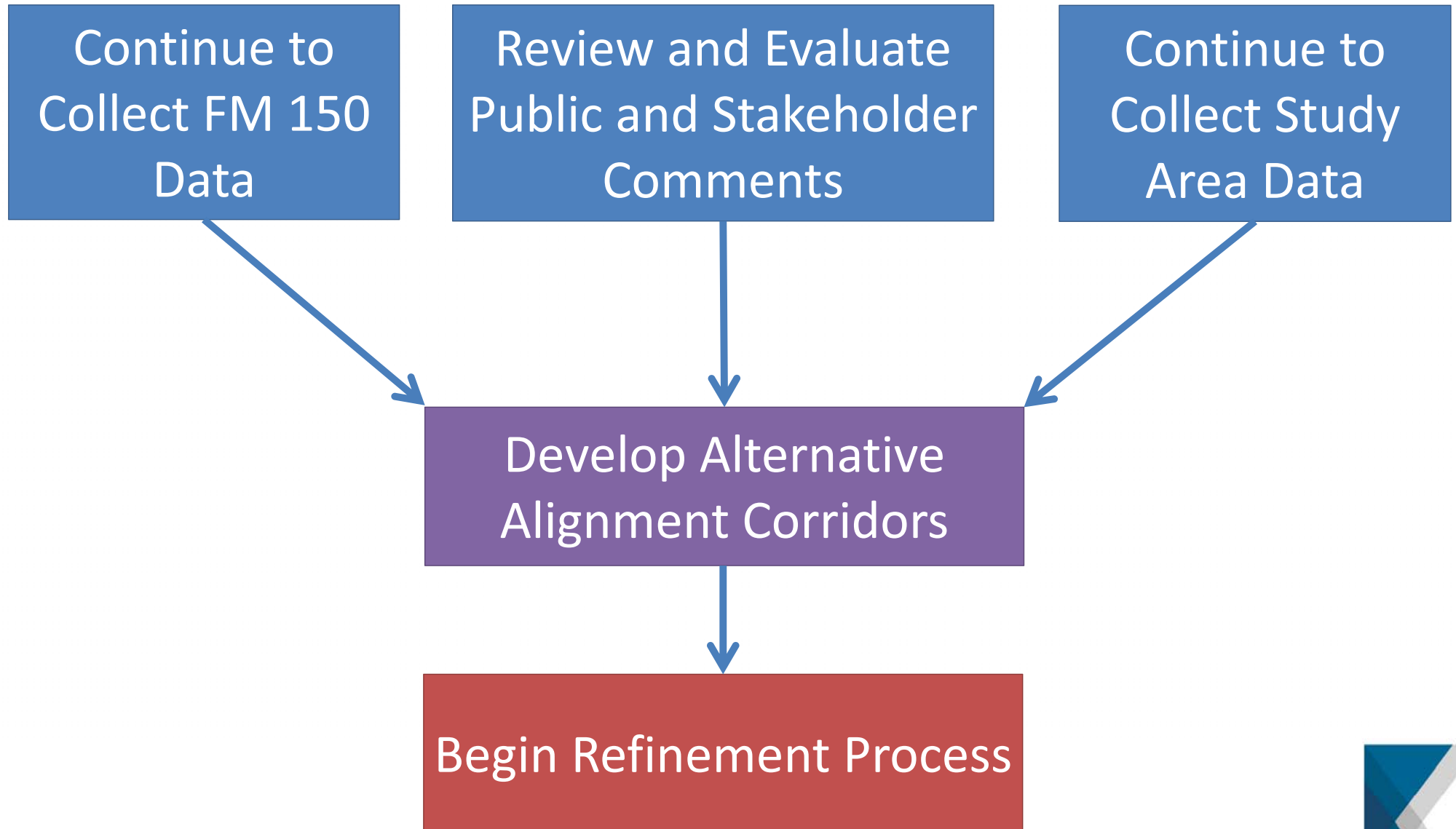
**2035 LEVEL OF SERVICE
FROM HAYS COUNTY
TRANSPORTATION PLAN**



Schedule



Next Steps



Next Steps

For Project Information

Arin Gray

Public Information Consultant

512-533-9100 Ext. 12

info@improvefm150.com

Email updates: Email info@improvefm150.com with 'Email Updates' in the subject line.

Project Website: www.improvefm150.com



ADOPTED: JANUARY 22, 2013
AMENDED: MARCH 5, 2013
AMENDED: JUNE 25, 2013

